

**UNIVERSITAT DE BARCELONA**

**DEPARTAMENT DE CIENCIAS**

**MORFOLÓGIQUES I**

**ODONTO-ESTOMATOLOGIA**

**TESIS DOCTORAL**

**"ESTUDIO RUGOSIMÉTRICO DE LA  
SUPERFICIE DE LA CERÁMICA  
FELDESPÁTICA UTILIZADA EN LA  
ELABORACIÓN DE RESTAURACIONES  
CERAMO-METÁLICAS"**

**PRESENTADA POR EL LICENCIADO EN**

**MEDICINA Y CIRUGÍA:**

**JOSÉ MARÍA ANGLADA CANTARELL**

**DIRECTORES:**

**PROF. F. J. GASCÓN MAYORDOMO (E.P.D.)**

**PROF. J. SALSENCH CABRÉ**

**BARCELONA JUNIO 1992**

*J. Anglada Cantarell*



PERTHOMETER M4P  
DAT.  
OBJ. VIB15C  
#  
LT 4.8 MM  
RA 6.70 UM  
RZ 28.48 UM  
RMAX 42.56 UM  
RPM 17.53 UM  
PC<1.3> 020 /CM

PERTHOMETER M4P  
DAT.  
OBJ. VIB16a  
#  
LT 4.8 MM  
RA 4.37 UM  
RZ 21.95 UM  
RMAX 28.48 UM  
RPM 11.26 UM  
PC<1.3> 027 /CM

PERTHOMETER M4P  
DAT.  
OBJ. VIB16b  
#  
LT 4.8 MM  
RA 3.84 UM  
RZ 20.44 UM  
RMAX 25.12 UM  
RPM 11.45 UM  
PC<1.3> 022 /CM

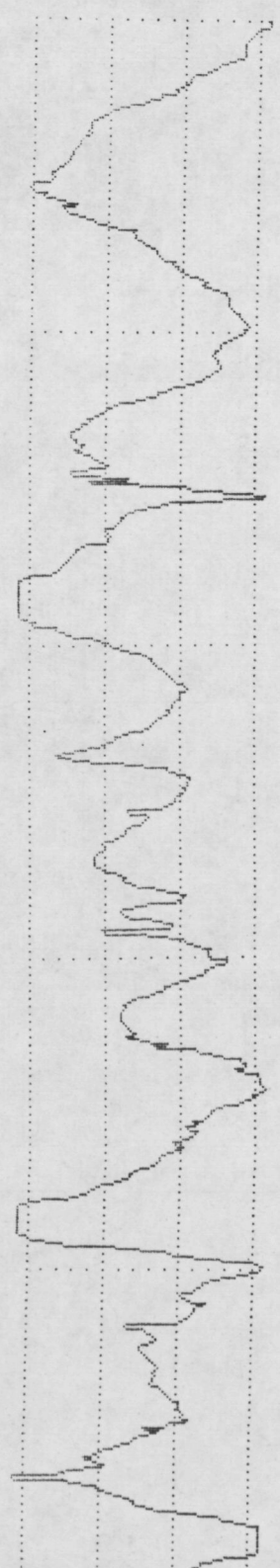
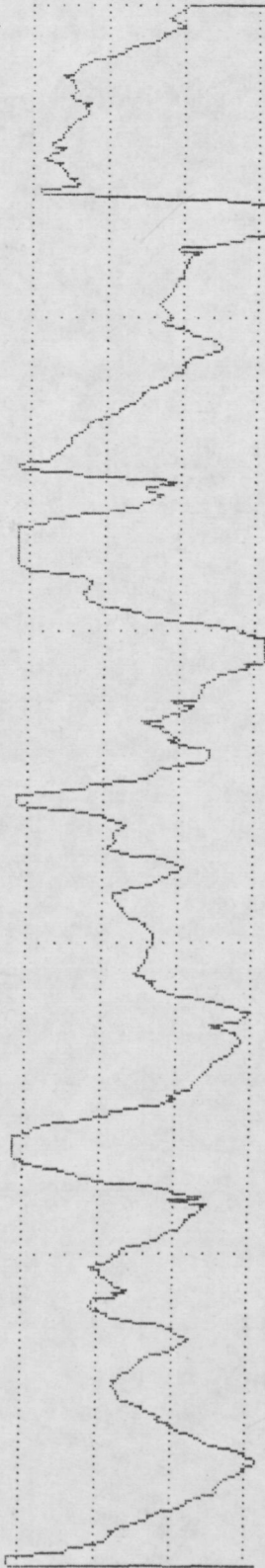
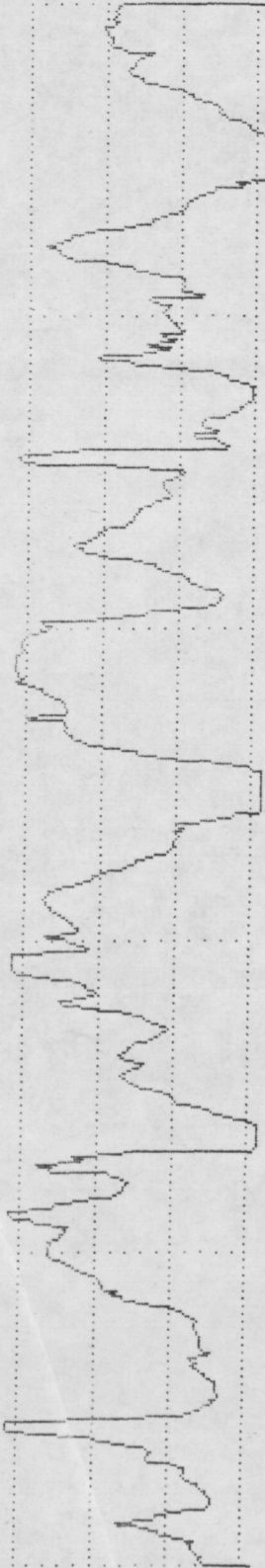
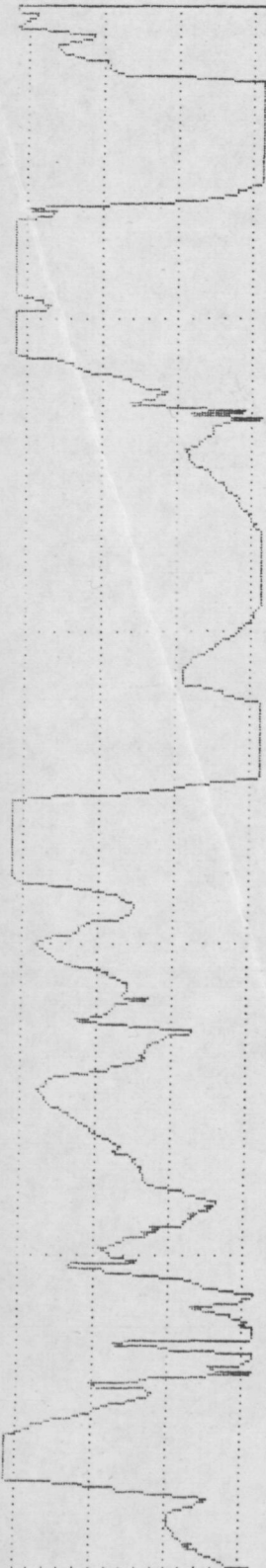
PERTHOMETER M4P  
DAT.  
OBJ. VIB16C  
#  
LT 4.8 MM  
RA 3.69 UM  
RZ 17.12 UM  
RMAX 20.16 UM  
RPM 8.64 UM  
PC<1.3> 030 /CM

VER 5 UM  
HOR LC .80 MM

VER 5 UM  
HOR LC .80 MM

VER 5 UM  
HOR LC .80 MM

VER 5 UM  
HOR LC .80 MM



PERTHOMETER M4P  
 DAT.  
 OBJ.VI87a  
 #  
 LT 4.8 MM  
 RA 5.90 UM  
 RZ 24.57 UM  
 RMAX 33.28 UM  
 RPM 9.66 UM  
 PC<1.3> 027 /CM

PERTHOMETER M4P  
 DAT.  
 OBJ.VI87b  
 #  
 LT 4.8 MM  
 RA 7.49 UM  
 RZ 32.38 UM  
 RMAX 47.04 UM  
 RPM 12.35 UM  
 PC<1.3> 027 /CM

PERTHOMETER M4P  
 DAT.  
 OBJ.VI87c  
 #  
 LT 4.8 MM  
 RA 4.91 UM  
 RZ 23.55 UM  
 RMAX 32.96 UM  
 RPM 12.03 UM  
 PC<1.3> 025 /CM

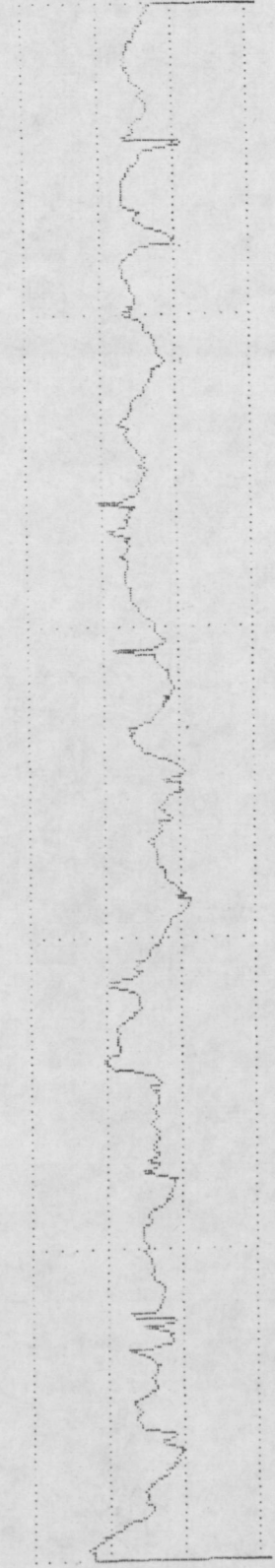
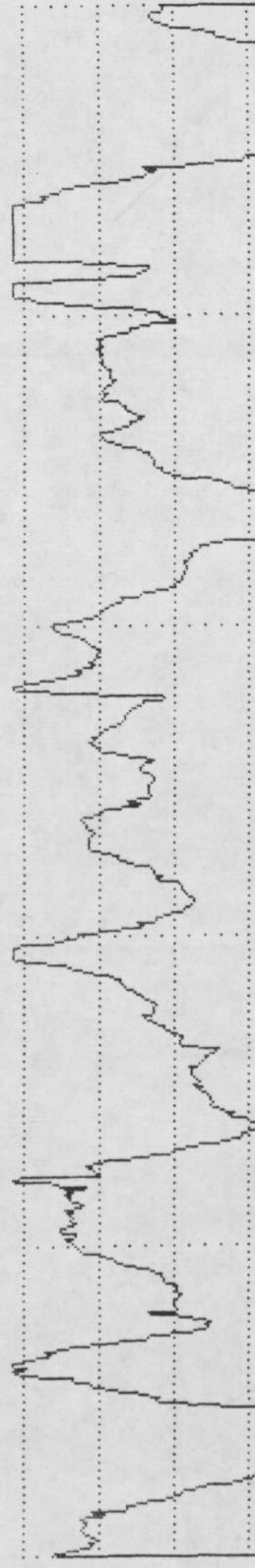
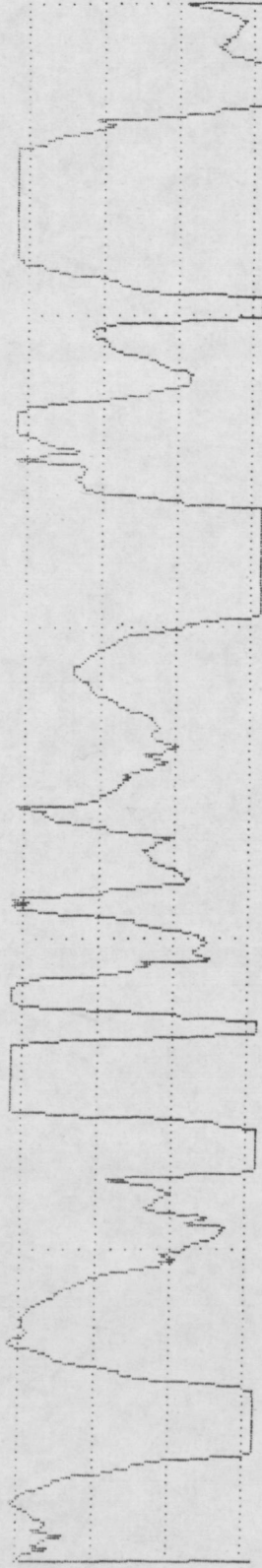
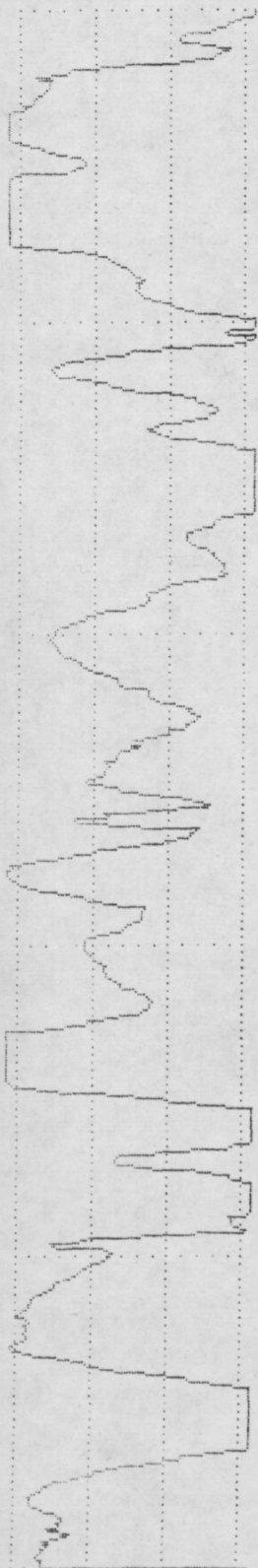
PERTHOMETER M4P  
 DAT.  
 OBJ.VI88a  
 #  
 LT 4.8 MM  
 RA 0.93 UM  
 RZ 4.89 UM  
 RMAX 6.28 UM  
 RPM 2.50 UM  
 PC<1.3> 030 /CM

VER 5 UM  
 HOR LC .80 MM

VER 5 UM  
 HOR LC .80 MM

VER 5 UM  
 HOR LC .80 MM

VER 5 UM  
 HOR LC .80 MM



PERTHOMETER M4P  
 DAT.  
 OBJ. VIB18 b  
 #  
 LT 4.8 MM  
 RA 2.66 UM  
 RZ 15.80 UM  
 RMAX 44.48 UM  
 RPM 5.31 UM  
 PC<1.3> 017 /CM

PERTHOMETER M4P  
 DAT.  
 OBJ. VIB18 c  
 #  
 LT 4.8 MM  
 RA 2.16 UM  
 RZ 11.23 UM  
 RMAX 15.84 UM  
 RPM 6.56 UM  
 PC<1.3> 027 /CM

PERTHOMETER M4P  
 DAT.  
 OBJ. VIB19 a  
 #  
 LT 4.8 MM  
 RA 4.64 UM  
 RZ 22.14 UM  
 RMAX 43.52 UM  
 RPM 8.70 UM  
 PC<1.3> 025 /CM

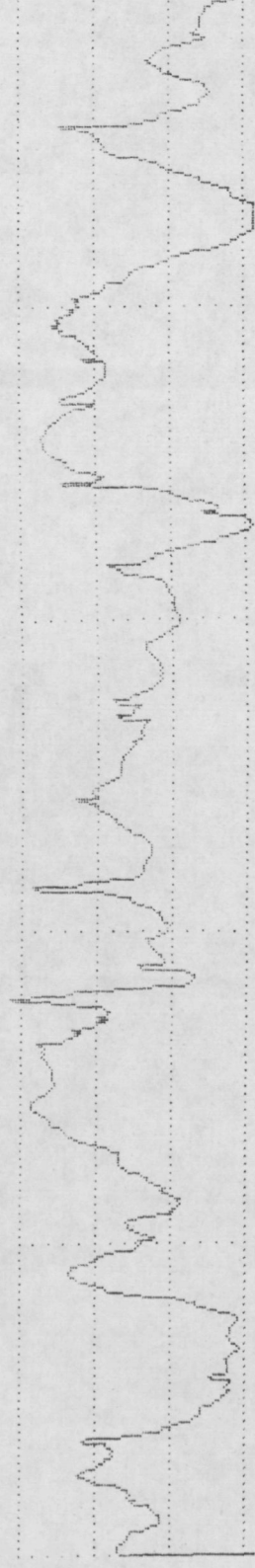
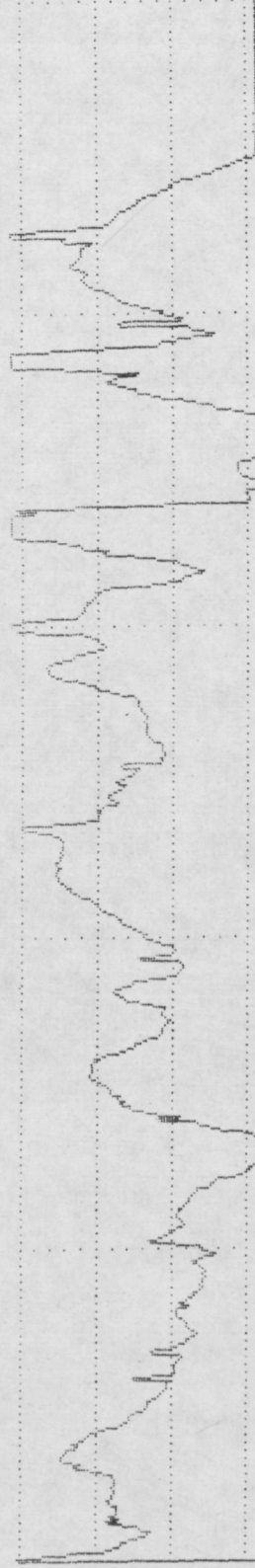
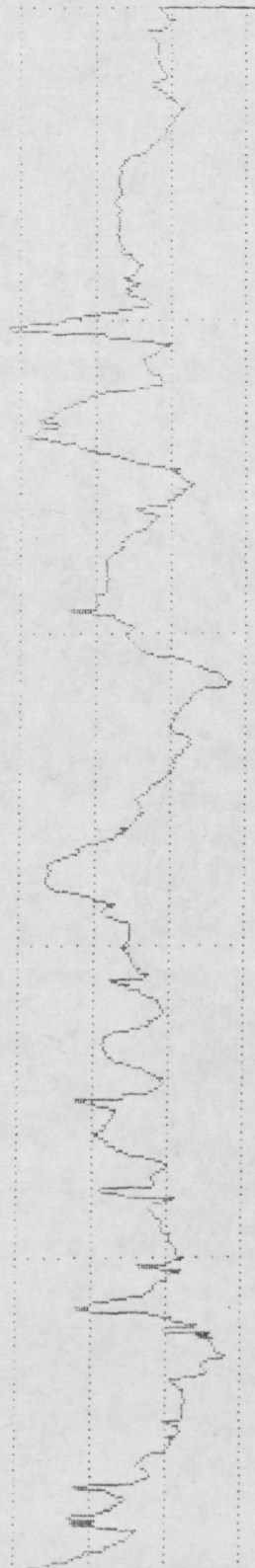
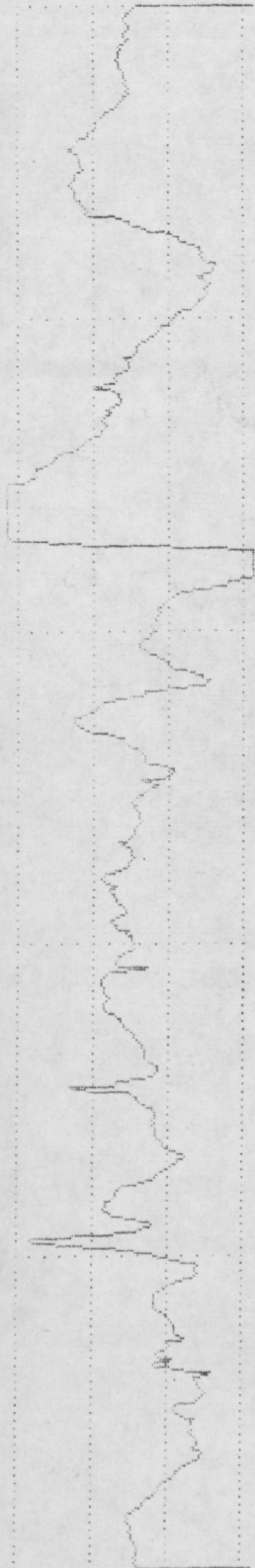
PERTHOMETER M4P  
 DAT.  
 OBJ. VIB19 b  
 #  
 LT 4.8 MM  
 RA 3.19 UM  
 RZ 12.83 UM  
 RMAX 14.56 UM  
 RPM 6.49 UM  
 PC<1.3> 025 /CM

VER 5 UM  
 HOR LC .80 MM

VER 5 UM  
 HOR LC .80 MM

VER 5 UM  
 HOR LC .80 MM

VER 5 UM  
 HOR LC .80 MM



PERTHOMETER M4P  
 DAT.  
 OBJ. VIB19 C  
 #  
 LT 4.8 MM  
 RA 4.55 UM  
 RZ 21.44 UM  
 RMAX 27.84 UM  
 RPM 12.48 UM  
 PC<1.3> 025 /CM

PERTHOMETER M4P  
 DAT.  
 OBJ. VIB20 a  
 #  
 LT 4.8 MM  
 RA 7.99 UM  
 RZ 32.83 UM  
 RMAX 60.16 UM  
 RPM 15.48 UM  
 PC<1.3> 017 /CM

PERTHOMETER M4P  
 DAT.  
 OBJ. VIB20 b  
 #  
 LT 4.8 MM  
 RA 5.14 UM  
 RZ 21.08 UM  
 RMAX 26.56 UM  
 RPM 9.72 UM  
 PC<1.3> 012 /CM

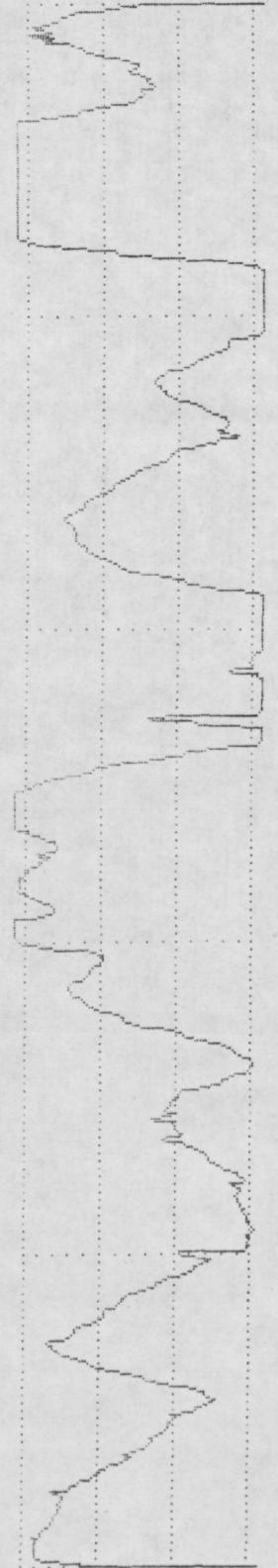
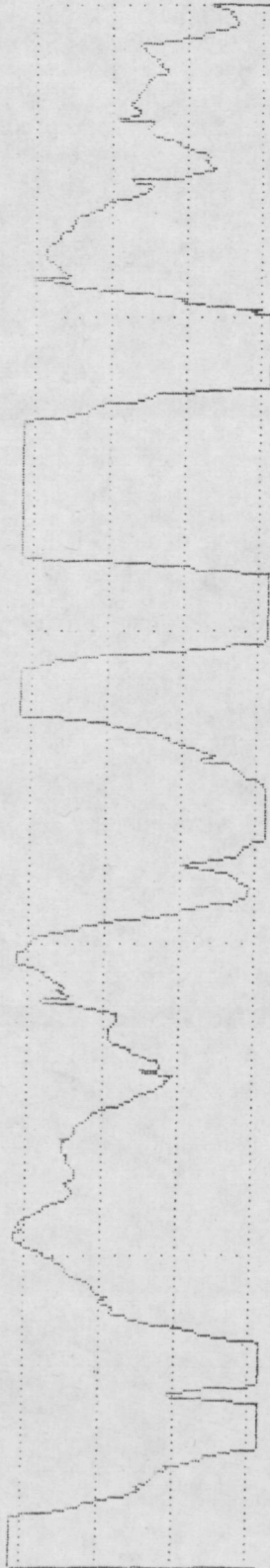
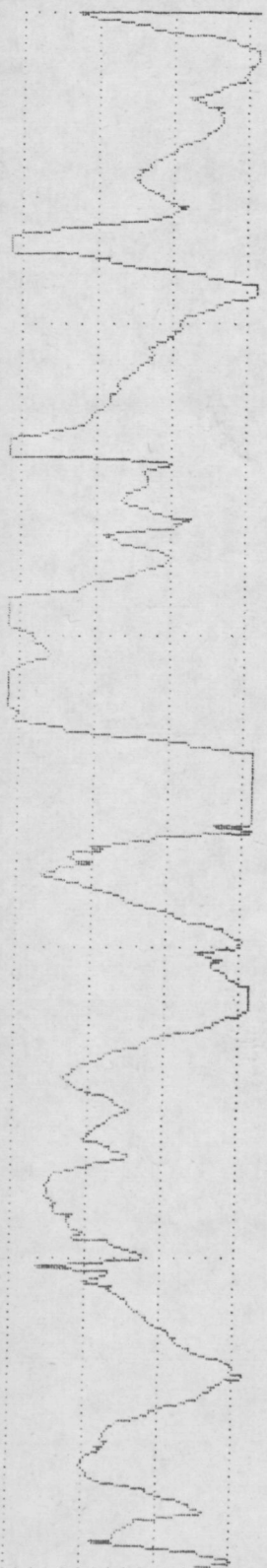
PERTHOMETER M4P  
 DAT.  
 OBJ. VIB20 c  
 #  
 LT 4.8 MM  
 RA 5.67 UM  
 RZ 20.57 UM  
 RMAX 27.04 UM  
 RPM 9.37 UM  
 PC<1.3> 012 /CM

VER 5 UM  
 HOR LC .80 MM

VER 5 UM  
 HOR LC .80 MM

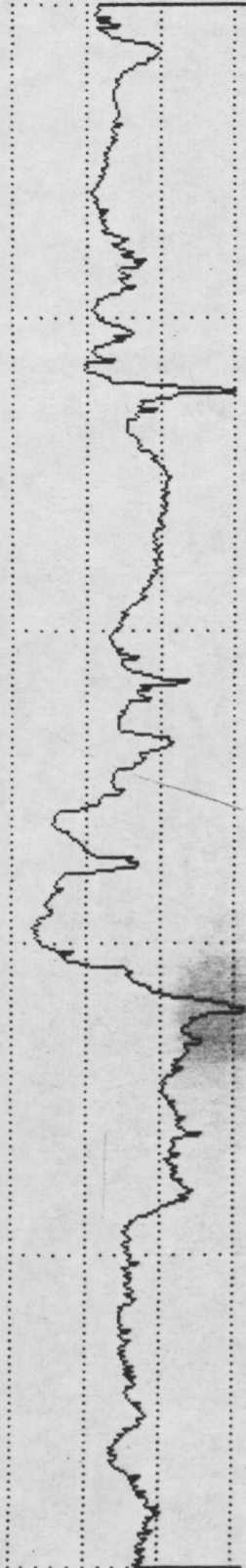
VER 5 UM  
 HOR LC .80 MM

VER 5 UM  
 HOR LC .80 MM



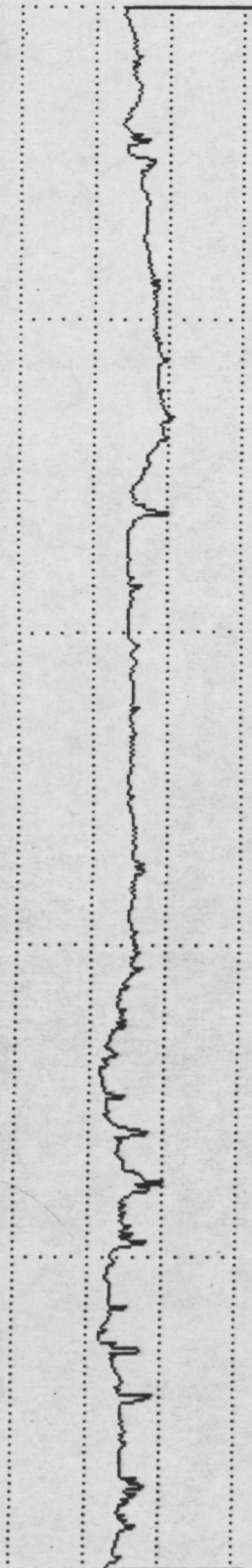
PERTHOMETER M4P  
DAT.  
OBJ. IPP  $\Delta a$   
#  
LT 4.8 MM  
RA 1.83  $\mu$ M  
RZ 9.18  $\mu$ M  
RMAX 16.64  $\mu$ M  
RPM 3.55  $\mu$ M  
PC<1.3> 017 /CM

VER 5  $\mu$ M  
HOR LC .80 MM



PERTHOMETER M4P  
DAT.  
OBJ. IPP  $\Delta b$   
#  
LT 4.8 MM  
RA 0.61  $\mu$ M  
RZ 2.87  $\mu$ M  
RMAX 4.32  $\mu$ M  
RPM 0.92  $\mu$ M  
PC<1.3> 012 /CM

VER 5  $\mu$ M  
HOR LC .80 MM



PERTHOMETER M4P  
DAT.  
OBJ. IPP  $\Delta c$   
#  
LT 4.8 MM  
RA 1.37  $\mu$ M  
RZ 6.43  $\mu$ M  
RMAX 10.24  $\mu$ M  
RPM 1.74  $\mu$ M  
PC<1.3> 012 /CM

VER 5  $\mu$ M  
HOR LC .80 MM



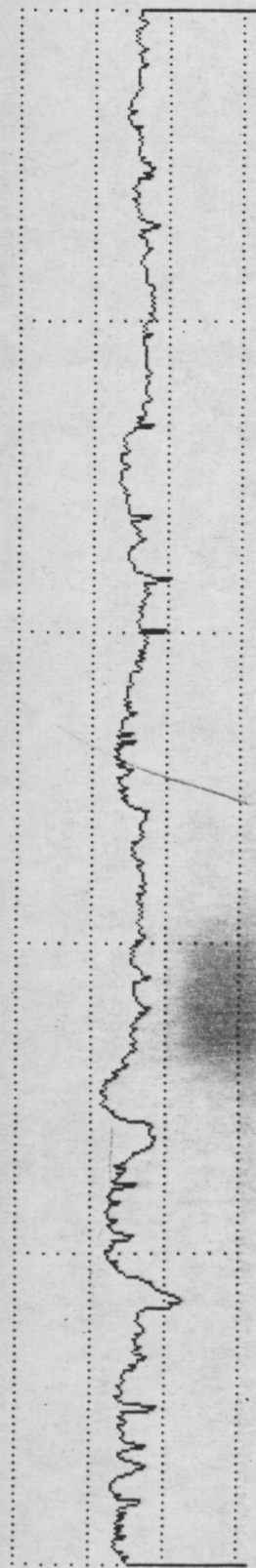
PERTHOMETER M4P  
DAT.  
OBJ. IPP  $\Delta 2a$   
#  
LT 4.8 MM  
RA 0.66  $\mu$ M  
RZ 2.93  $\mu$ M  
RMAX 5.20  $\mu$ M  
RPM 0.72  $\mu$ M  
PC<1.3> 005 /CM

VER 5  $\mu$ M  
HOR LC .80 MM



PERTHOMETER M4P  
DAT.  
OBJ. IPP2b  
#  
LT 4.8 MM  
RA 0.65 UM  
RZ 3.31 UM  
RMAX 5.20 UM  
RPM 1.13 UM  
PC<1.3> 017 /CM

VER 5 UM  
HOR LC .80 MM



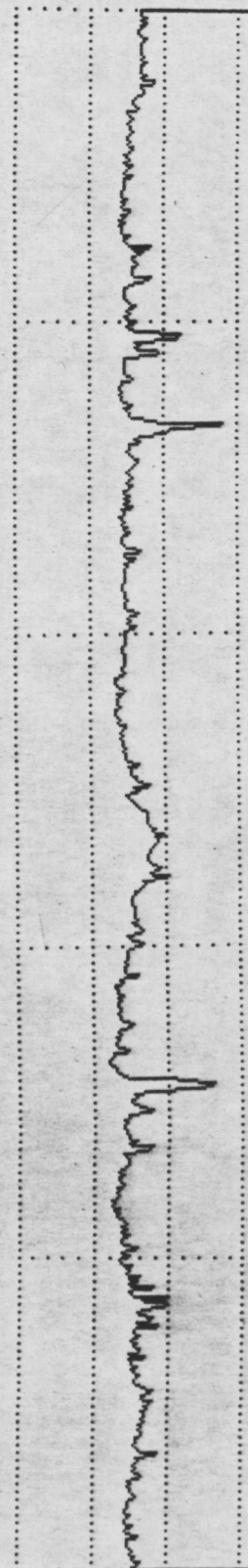
PERTHOMETER M4P  
DAT.  
OBJ. IPP2c  
#  
LT 4.8 MM  
RA 0.62 UM  
RZ 4.00 UM  
RMAX 6.08 UM  
RPM 1.44 UM  
PC<1.3> 007 /CM

VER 5 UM  
HOR LC .80 MM



PERTHOMETER M4P  
DAT.  
OBJ. IPP3a  
#  
LT 4.8 MM  
RA 0.55 UM  
RZ 4.56 UM  
RMAX 7.12 UM  
RPM 0.83 UM  
PC<1.3> 007 /CM

VER 5 UM  
HOR LC .80 MM



PERTHOMETER M4P  
DAT.  
OBJ. IPP3b  
#  
LT 4.8 MM  
RA 1.12 UM  
RZ 6.20 UM  
RMAX 9.60 UM  
RPM 1.82 UM  
PC<1.3> 015 /CM

VER 5 UM  
HOR LC .80 MM



PERTHOMETER M4P  
DAT.  
OBJ. IPP 3c  
#  
LT 4.8 MM  
RA 0.74 UM  
RZ 4.81 UM  
RMAX 9.04 UM  
RPM 1.48 UM  
PC<1.3> 010 /CM

PERTHOMETER M4P  
DAT.  
OBJ. IPP 4a  
#  
LT 4.8 MM  
RA 0.84 UM  
RZ 5.12 UM  
RMAX 9.36 UM  
RPM 1.53 UM  
PC<1.3> 022 /CM

PERTHOMETER M4P  
DAT.  
OBJ. IPP 4b  
#  
LT 4.8 MM  
RA 0.72 UM  
RZ 5.18 UM  
RMAX 8.00 UM  
RPM 1.12 UM  
PC<1.3> 025 /CM

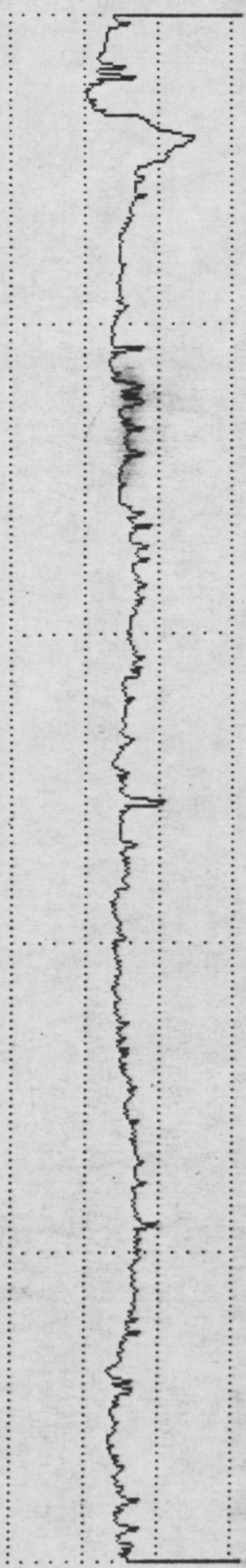
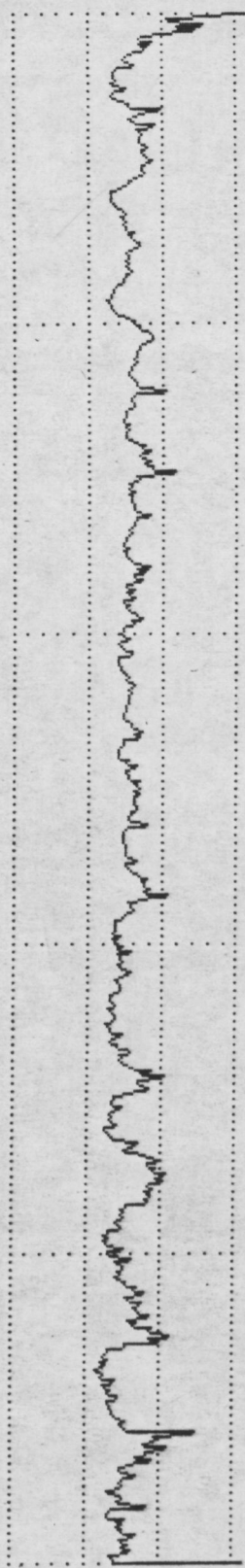
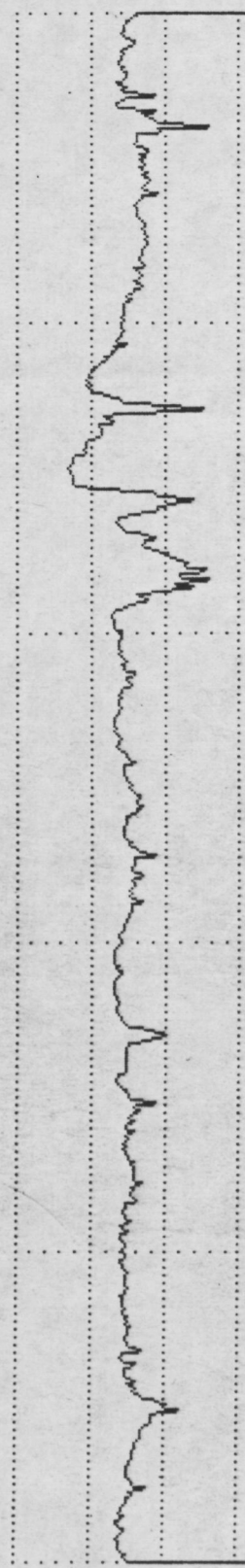
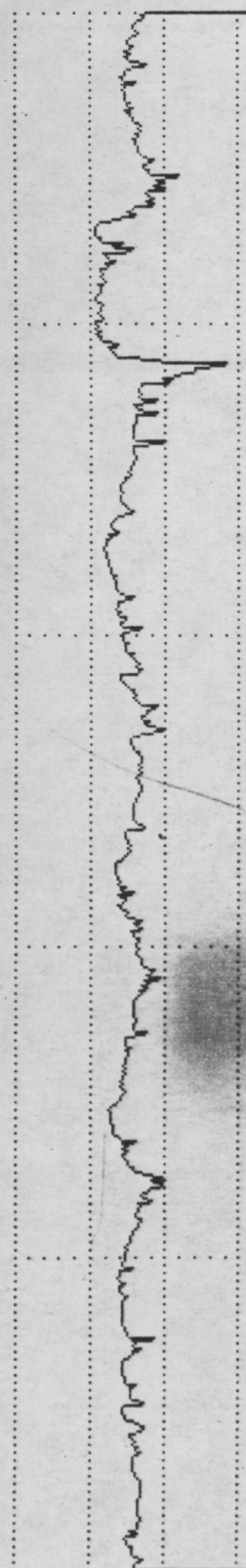
PERTHOMETER M4P  
DAT.  
OBJ. IPP 4c  
#  
LT 4.8 MM  
RA 0.61 UM  
RZ 3.74 UM  
RMAX 7.36 UM  
RPM 1.16 UM  
PC<1.3> 017 /CM

VER 5 UM  
HOR LC .80 MM

VER 5 UM  
HOR LC .80 MM

VER 5 UM  
HOR LC .80 MM

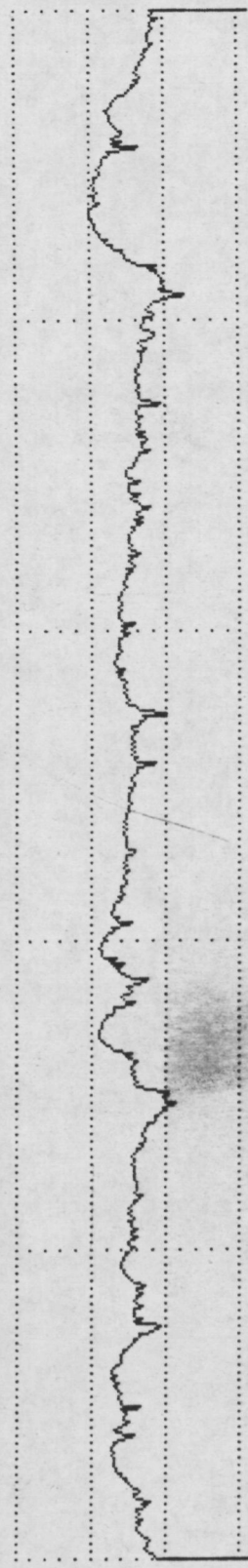
VER 5 UM  
HOR LC .80 MM





PERTHOMETER M4P  
DAT.  
OBJ. IPP5a  
#  
LT 4.8 MM  
RA 0.79 UM  
RZ 4.28 UM  
RMAX 6.36 UM  
RPM 1.64 UM  
PC<1.3> 017 /CM

VER 5 UM  
HOR LC .80 MM



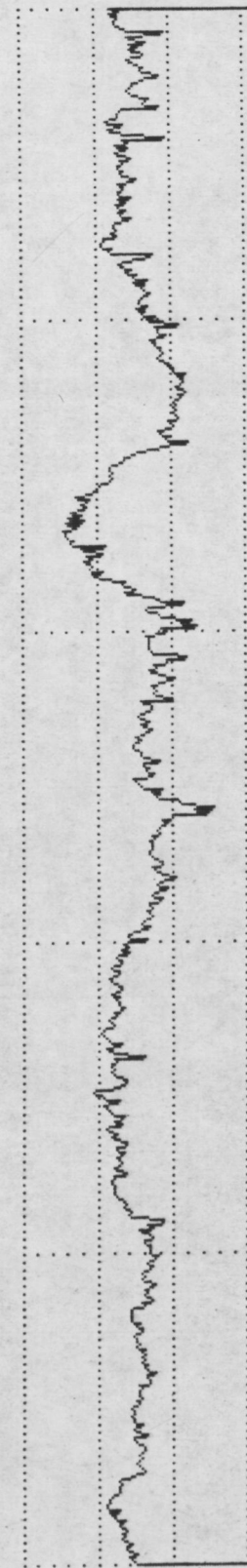
PERTHOMETER M4P  
DAT.  
OBJ. IPP5b  
#  
LT 4.8 MM  
RA 1.14 UM  
RZ 6.30 UM  
RMAX 8.92 UM  
RPM 2.46 UM  
PC<1.3> 030 /CM

VER 5 UM  
HOR LC .80 MM



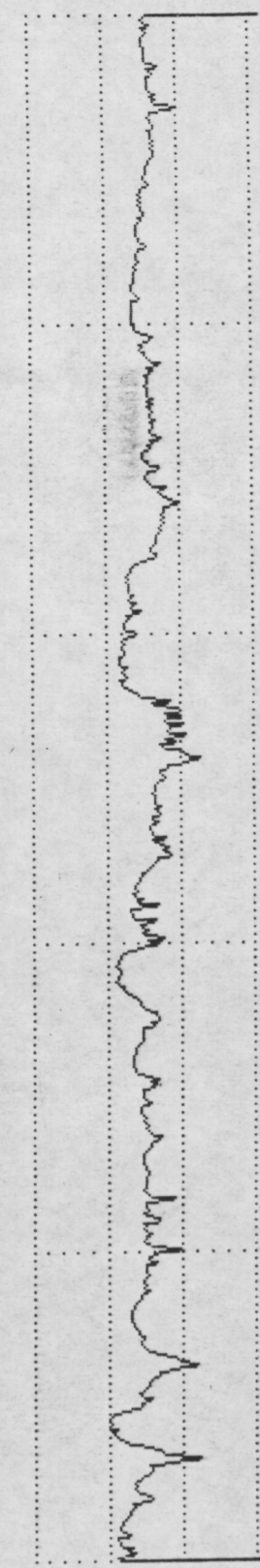
PERTHOMETER M4P  
DAT.  
OBJ. IPP5c  
#  
LT 4.8 MM  
RA 1.28 UM  
RZ 5.48 UM  
RMAX 9.04 UM  
RPM 2.56 UM  
PC<1.3> 015 /CM

VER 5 UM  
HOR LC .80 MM



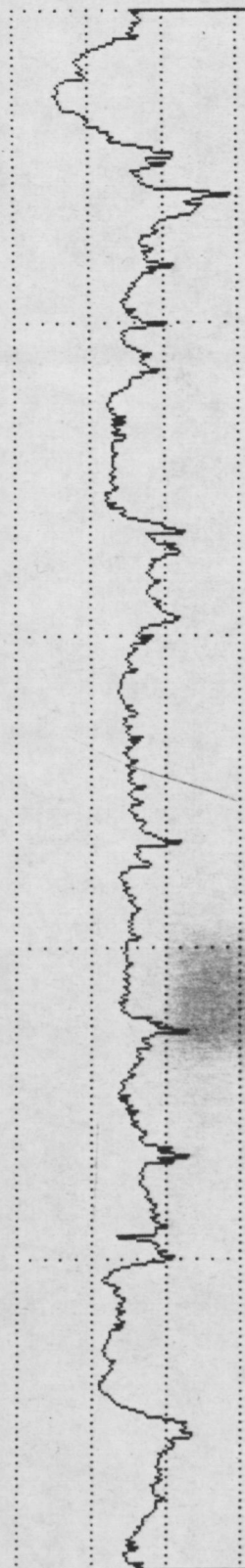
PERTHOMETER M4P  
DAT.  
OBJ. IPP6a  
#  
LT 4.8 MM  
RA 0.75 UM  
RZ 4.46 UM  
RMAX 6.00 UM  
RPM 1.66 UM  
PC<1.3> 022 /CM

VER 5 UM  
HOR LC .80 MM



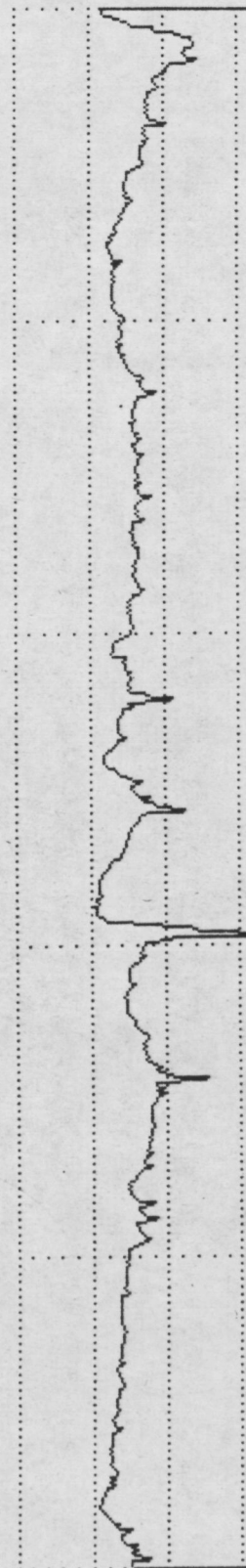
PERTHOMETER M4P  
DAT.  
OBJ. IPP6 b  
#  
LT 4.8 MM  
RA 1.18 UM  
RZ 6.41 UM  
RMAX 11.68 UM  
RPM 2.00 UM  
PC<1.3> 020 /CM

VER 5 UM  
HOR LC .80 MM



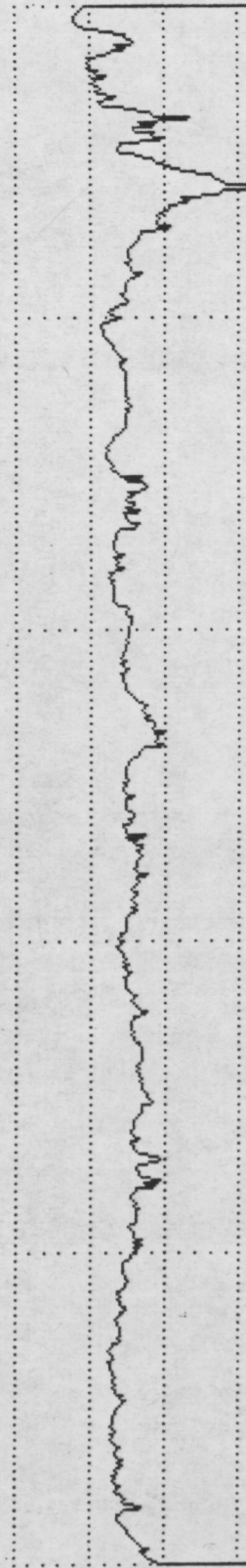
PERTHOMETER M4P  
DAT.  
OBJ. IPP6 c  
#  
LT 4.8 MM  
RA 0.96 UM  
RZ 6.27 UM  
RMAX 13.28 UM  
RPM 1.47 UM  
PC<1.3> 012 /CM

VER 5 UM  
HOR LC .80 MM



PERTHOMETER M4P  
DAT.  
OBJ. IPP7 a  
#  
LT 4.8 MM  
RA 0.84 UM  
RZ 5.05 UM  
RMAX 13.12 UM  
RPM 1.66 UM  
PC<1.3> 015 /CM

VER 5 UM  
HOR LC .80 MM



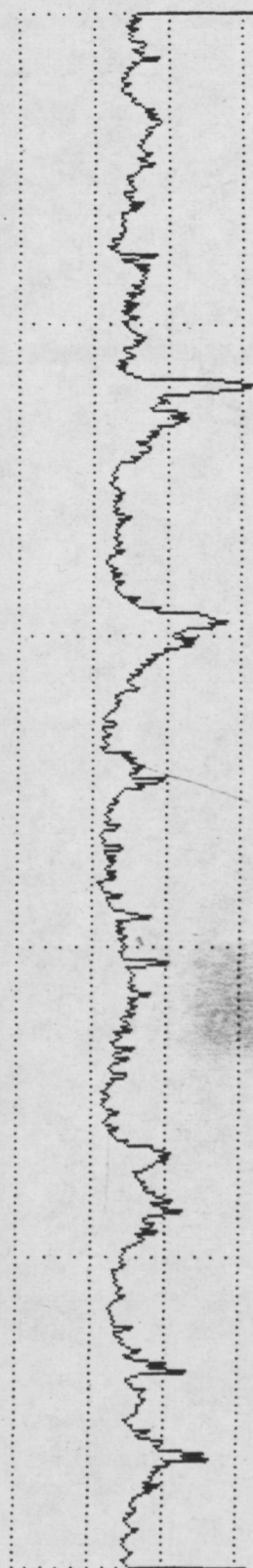
PERTHOMETER M4P  
DAT.  
OBJ. IPP7 b  
#  
LT 4.8 MM  
RA 1.11 UM  
RZ 7.93 UM  
RMAX 17.60 UM  
RPM 2.46 UM  
PC<1.3> 015 /CM

VER 5 UM  
HOR LC .80 MM



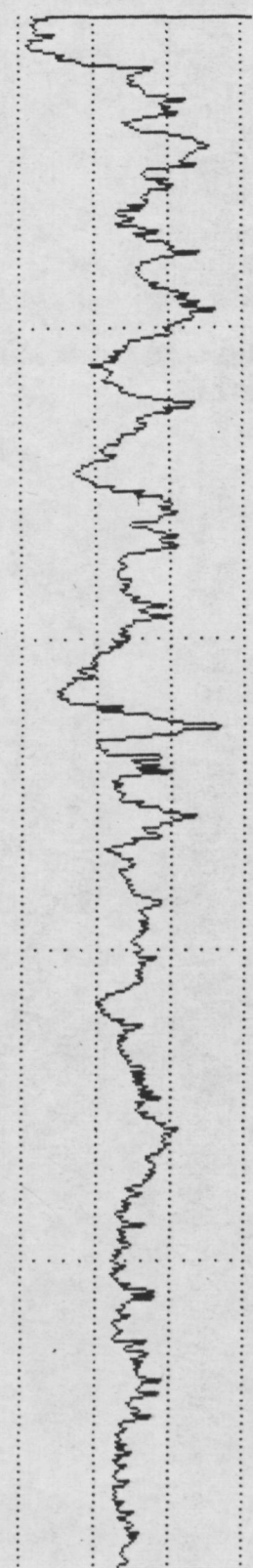
PERTHOMETER M4P  
DAT.  
OBJ. IPP7c  
#  
LT 4.8 MM  
RA 1.05 UM  
RZ 6.64 UM  
RMAX 10.48 UM  
RPM 1.80 UM  
PC<1.3> 027 /CM

VER 5 UM  
HOR LC .80 MM



PERTHOMETER M4P  
DAT.  
OBJ. IPP8a  
#  
LT 4.8 MM  
RA 1.43 UM  
RZ 8.17 UM  
RMAX 12.72 UM  
RPM 4.11 UM  
PC<1.3> 032 /CM

VER 5 UM  
HOR LC .80 MM



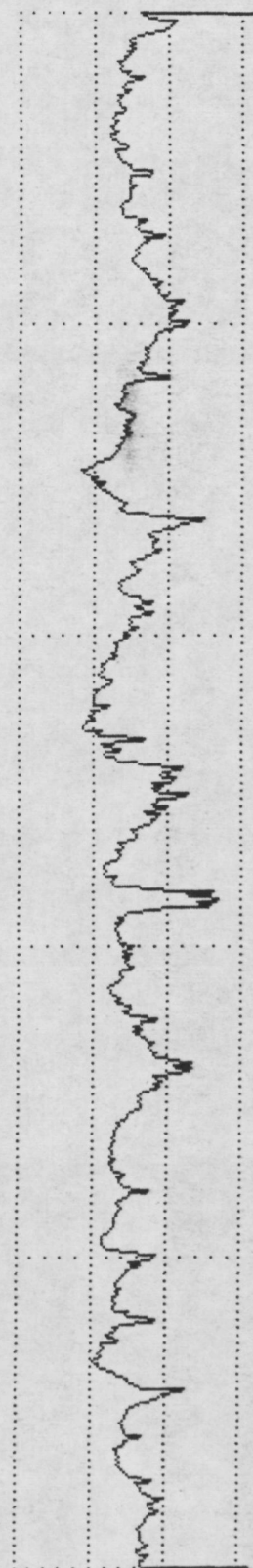
PERTHOMETER M4P  
DAT.  
OBJ. IPP8b  
#  
LT 4.8 MM  
RA 1.17 UM  
RZ 6.97 UM  
RMAX 11.68 UM  
RPM 2.67 UM  
PC<1.3> 027 /CM

VER 5 UM  
HOR LC .80 MM



PERTHOMETER M4P  
DAT.  
OBJ. IPP8c  
#  
LT 4.8 MM  
RA 1.16 UM  
RZ 7.07 UM  
RMAX 9.28 UM  
RPM 2.54 UM  
PC<1.3> 035 /CM

VER 5 UM  
HOR LC .80 MM



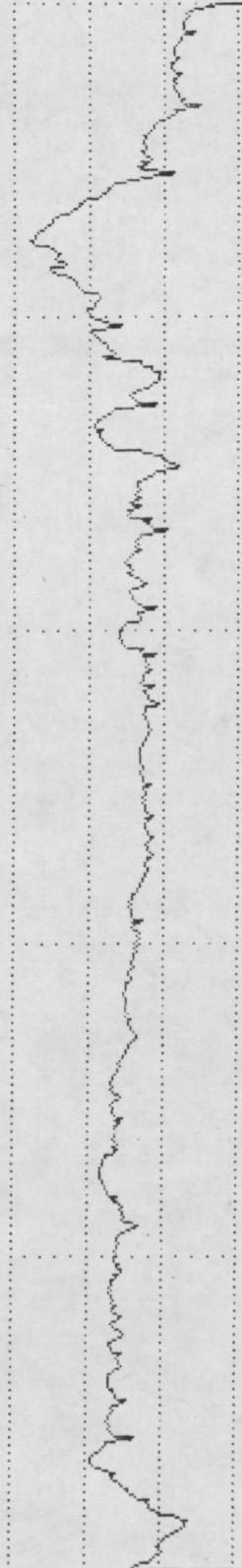
PERTHOMETER M4P  
DAT.  
OBJ. IPP 9a  
#  
LT 4.8 MM  
RA 1.30 UM  
RZ 5.80 UM  
RMAX 8.00 UM  
RPM 2.30 UM  
PC<1.3> 012 /CM

VER 5 UM  
HOR LC .80 MM



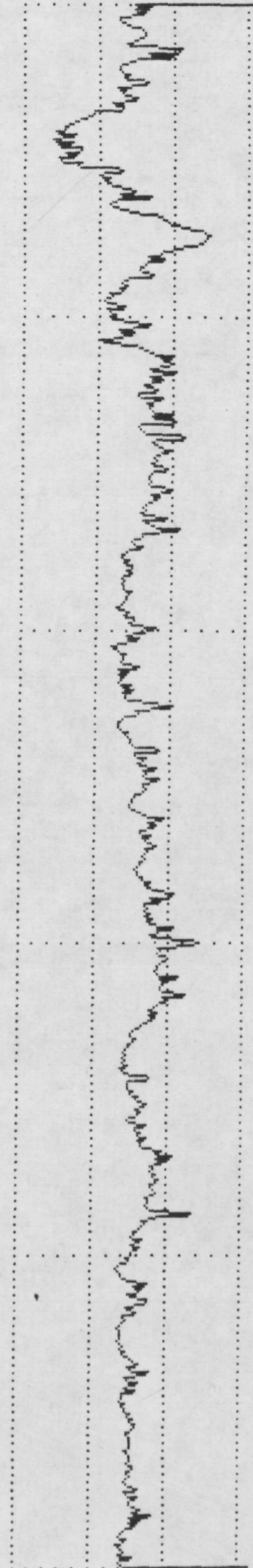
PERTHOMETER M4P  
DAT.  
OBJ. IPP 9b  
#  
LT 4.8 MM  
RA 1.41 UM  
RZ 5.96 UM  
RMAX 12.32 UM  
RPM 2.68 UM  
PC<1.3> 012 /CM

VER 5 UM  
HOR LC .80 MM



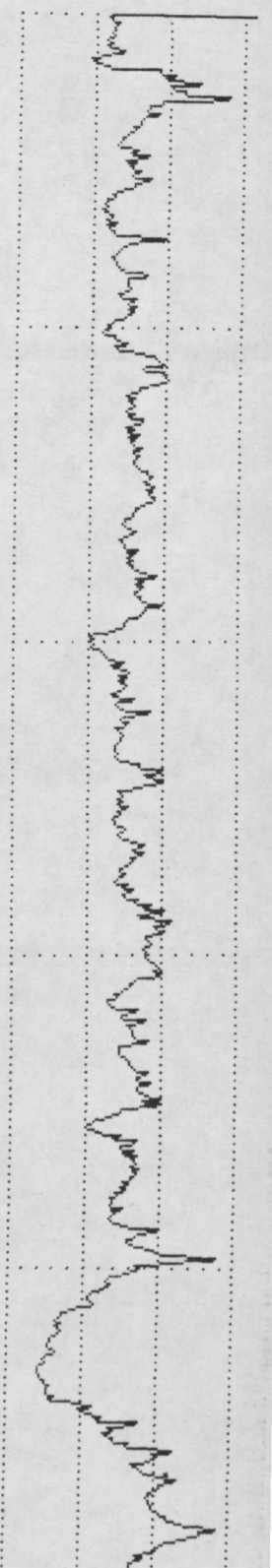
PERTHOMETER M4P  
DAT.  
OBJ. IPP 9c  
#  
LT 4.8 MM  
RA 1.03 UM  
RZ 5.80 UM  
RMAX 10.64 UM  
RPM 2.22 UM  
PC<1.3> 030 /CM

VER 5 UM  
HOR LC .80 MM



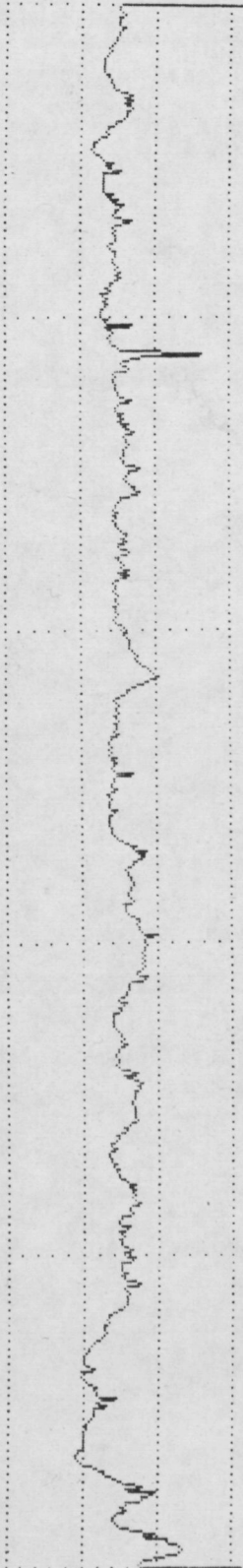
PERTHOMETER M4P  
DAT.  
OBJ. IPP 10a  
#  
LT 4.8 MM  
RA 1.32 UM  
RZ 8.19 UM  
RMAX 12.32 UM  
RPM 3.23 UM  
PC<1.3> 032 /CM

VER 5 UM  
HOR LC .80 MM



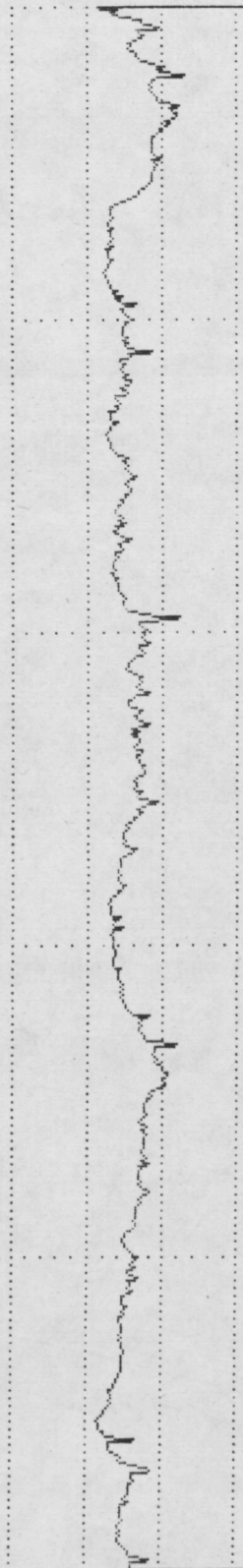
PERTHOMETER M4P  
DAT.  
OBJ. DPP 10b  
#  
LT 4.8 MM  
RA 0.75 UM  
RZ 4.52 UM  
RMAX 7.20 UM  
RPM 1.56 UM  
PC<1.3> 017 /CM

VER 5 UM  
HOR LC .80 MM



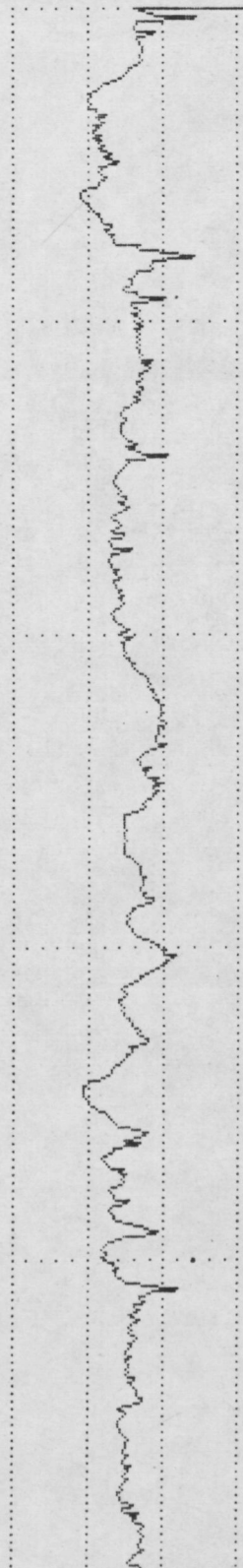
PERTHOMETER M4P  
DAT.  
OBJ. DPP 10c  
#  
LT 4.8 MM  
RA 0.81 UM  
RZ 4.32 UM  
RMAX 5.64 UM  
RPM 1.39 UM  
PC<1.3> 015 /CM

VER 5 UM  
HOR LC .80 MM



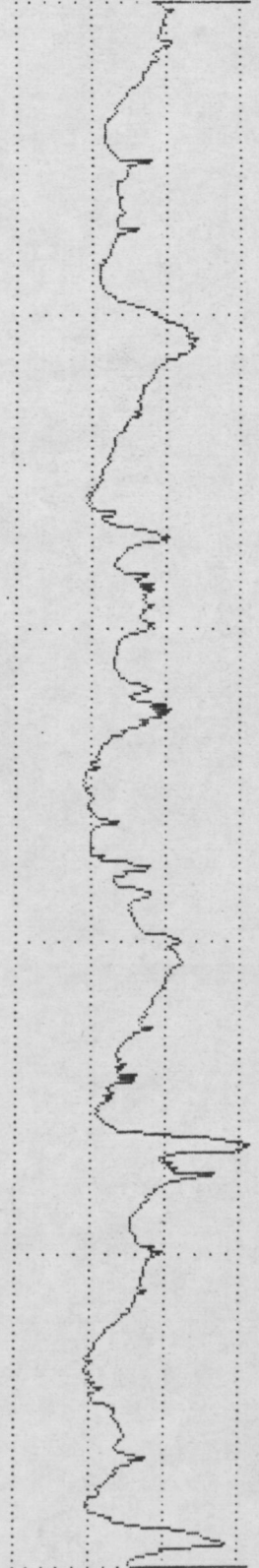
PERTHOMETER M4P  
DAT.  
OBJ. DPP 11a  
#  
LT 4.8 MM  
RA 0.92 UM  
RZ 5.13 UM  
RMAX 7.76 UM  
RPM 1.80 UM  
PC<1.3> 012 /CM

VER 5 UM  
HOR LC .80 MM



PERTHOMETER M4P  
DAT.  
OBJ. DPP 11b  
#  
LT 4.8 MM  
RA 1.55 UM  
RZ 7.84 UM  
RMAX 10.56 UM  
RPM 2.67 UM  
PC<1.3> 025 /CM

VER 5 UM  
HOR LC .80 MM



PERTHOMETER M4P  
DAT.  
OBJ. IPP 11c  
#  
LT 4.8 MM  
RA 1.17 UM  
RZ 3.79 UM  
RMAX 4.92 UM  
RPM 1.69 UM  
PC<1.3> 012 /CM

PERTHOMETER M4P  
DAT.  
OBJ. IPP 12a  
#  
LT 4.8 MM  
RA 1.04 UM  
RZ 5.31 UM  
RMAX 10.56 UM  
RPM 2.00 UM  
PC<1.3> 017 /CM

PERTHOMETER M4P  
DAT.  
OBJ. IPP 12b  
#  
LT 4.8 MM  
RA 0.98 UM  
RZ 5.47 UM  
RMAX 12.88 UM  
RPM 2.12 UM  
PC<1.3> 012 /CM

PERTHOMETER M4P  
DAT.  
OBJ. IPP 12c  
#  
LT 4.8 MM  
RA 0.92 UM  
RZ 5.82 UM  
RMAX 11.28 UM  
RPM 1.84 UM  
PC<1.3> 015 /CM

VER 5 UM  
HOR LC .80 MM

VER 5 UM  
HOR LC .80 MM

VER 5 UM  
HOR LC .80 MM

VER 5 UM  
HOR LC .80 MM

