

UNIVERSITAT DE BARCELONA

DEPARTAMENT DE CIENCIAS

MORFOLÓGIQUES I

ODONTO-ESTOMATOLOGIA

TESIS DOCTORAL

**"ESTUDIO RUGOSIMÉTRICO DE LA
SUPERFICIE DE LA CERÁMICA
FELDESPÁTICA UTILIZADA EN LA
ELABORACIÓN DE RESTAURACIONES
CERAMO-METÁLICAS"**

PRESENTADA POR EL LICENCIADO EN

MEDICINA Y CIRUGÍA:

JOSÉ MARÍA ANGLADA CANTARELL

DIRECTORES:

PROF. F. J. GASCÓN MAYORDOMO (E.P.D.)

PROF. J. SALSENCH CABRÉ

BARCELONA JUNIO 1992



J. Anglada

PERTHOMETER M4P
DAT.
OBJ. JPP 13a

LT 4.8 MM
RA 1.14 UM
RZ 6.12 UM
RMAX 8.48 UM
RPM 2.03 UM
PC<1.3> 012 /CM

PERTHOMETER M4P
DAT.
OBJ. JPP 13b

LT 4.8 MM
RA 1.21 UM
RZ 6.54 UM
RMAX 10.88 UM
RPM 2.14 UM
PC<1.3> 022 /CM

PERTHOMETER M4P
DAT.
OBJ. JPP 13c

LT 4.8 MM
RA 1.09 UM
RZ 4.92 UM
RMAX 6.48 UM
RPM 1.64 UM
PC<1.3> 015 /CM

PERTHOMETER M4P
DAT.
OBJ. JPP 14a

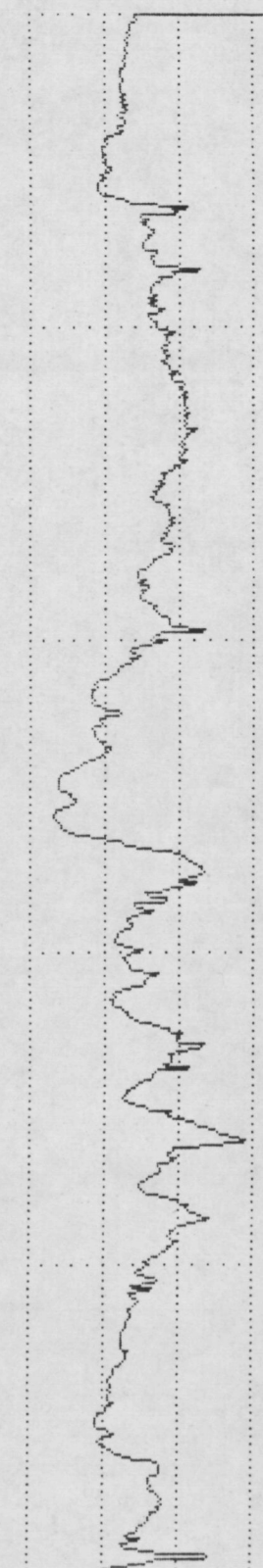
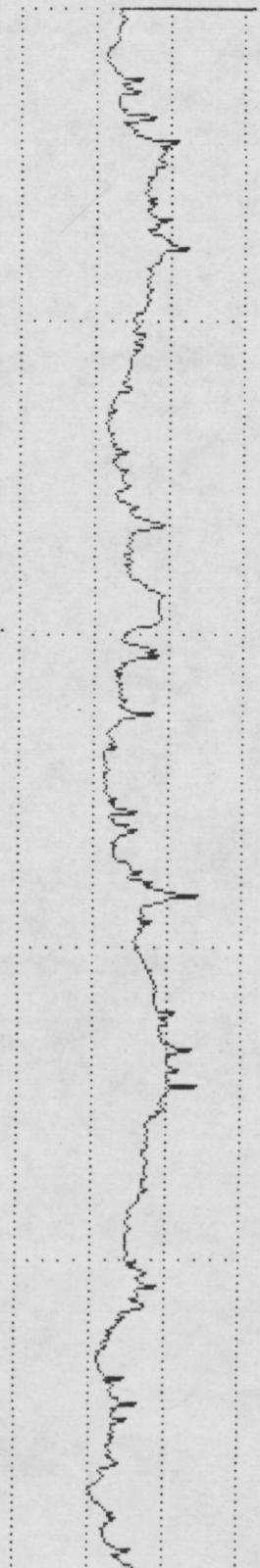
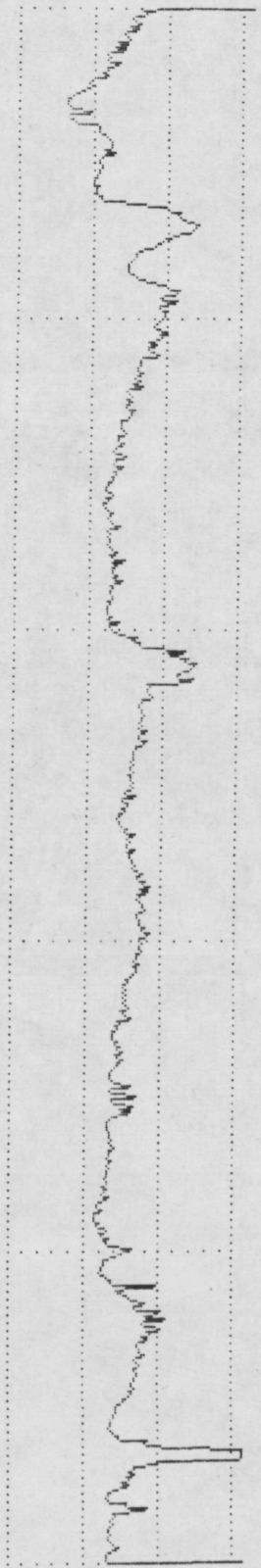
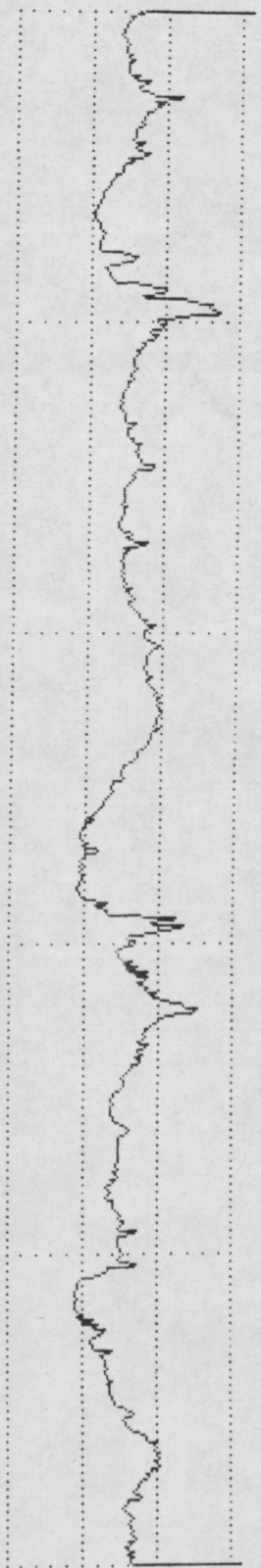
LT 4.8 MM
RA 1.80 UM
RZ 7.77 UM
RMAX 10.40 UM
RPM 3.00 UM
PC<1.3> 017 /CM

VER 5 UM
HOR LC .80 MM

VER 5 UM
HOR LC .80 MM

VER 5 UM
HOR LC .80 MM

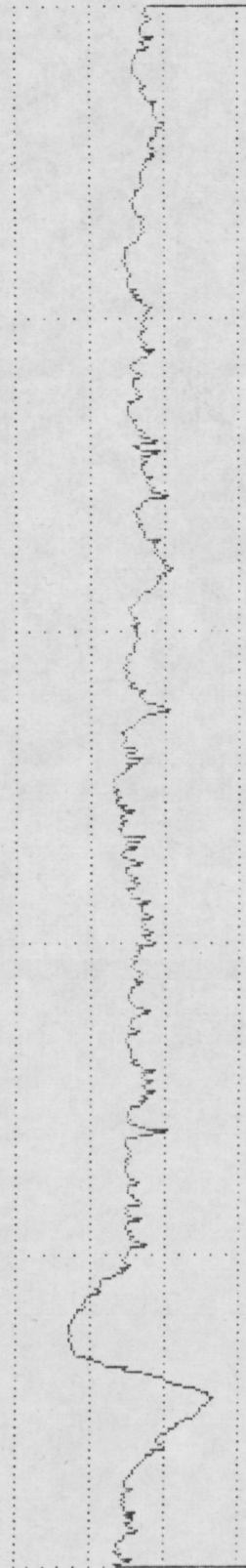
VER 5 UM
HOR LC .80 MM



PERTHOMETER M4P
DAT.
OBJ. IPP 14b

LT 4.8 MM
RA 0.94 UM
RZ 4.36 UM
RMAX 9.76 UM
RPM 1.12 UM
PC<1.3> 007 /CM

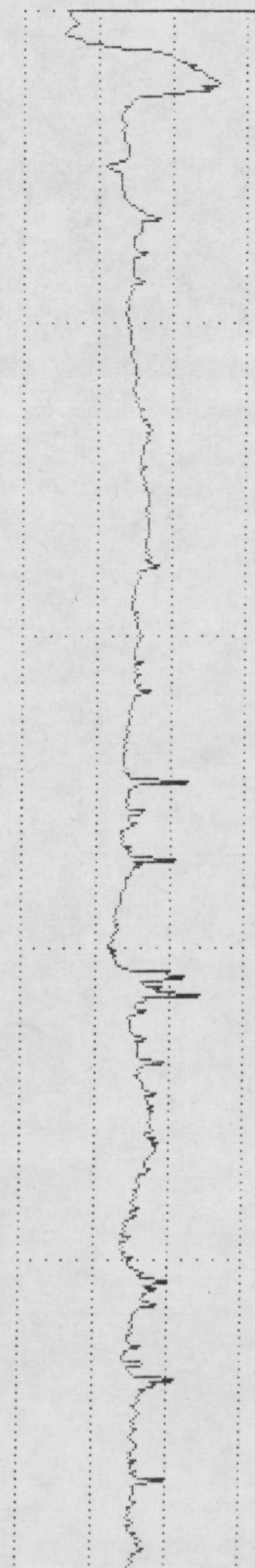
VER 5 UM
HOR LC .80 MM



PERTHOMETER M4P
DAT.
OBJ. IPP 14c

LT 4.8 MM
RA 0.73 UM
RZ 5.40 UM
RMAX 10.48 UM
RPM 1.85 UM
PC<1.3> 015 /CM

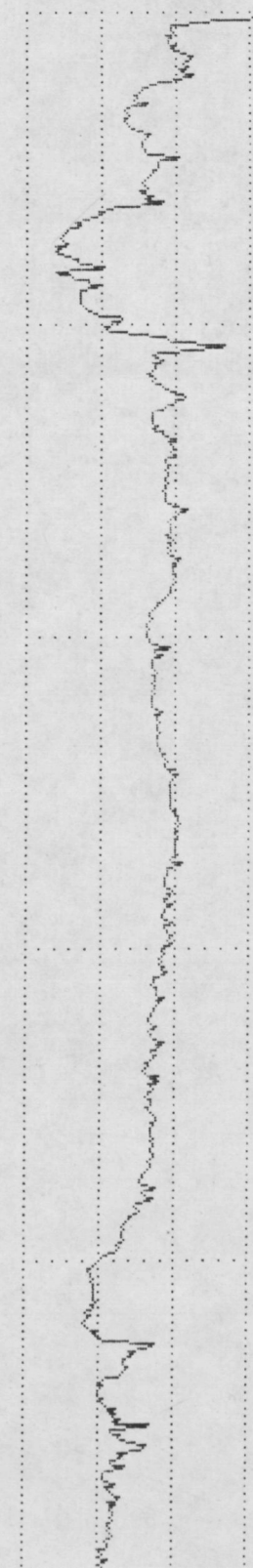
VER 5 UM
HOR LC .80 MM



PERTHOMETER M4P
DAT.
OBJ. IPP 15a

LT 4.8 MM
RA 1.76 UM
RZ 6.80 UM
RMAX 13.76 UM
RPM 2.83 UM
PC<1.3> 015 /CM

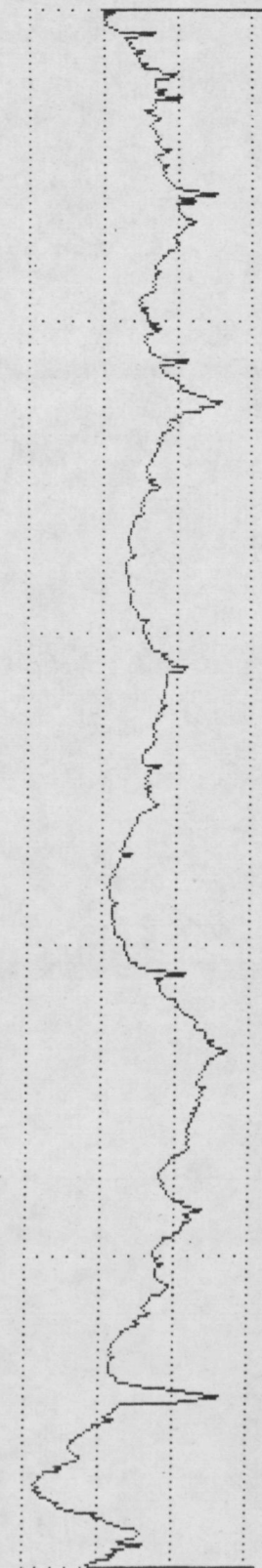
VER 5 UM
HOR LC .80 MM



PERTHOMETER M4P
DAT.
OBJ. IPP 15b

LT 4.8 MM
RA 1.80 UM
RZ 7.79 UM
RMAX 12.56 UM
RPM 2.81 UM
PC<1.3> 012 /CM

VER 5 UM
HOR LC .80 MM



PERTHOMETER M4P
 DAT.
 OBJ. DPP 15c
 #
 LT 4.8 MM
 RA 1.29 UM
 RZ 7.42 UM
 RMAX 13.04 UM
 RPM 2.04 UM
 PC<1.3> 015 /CM

PERTHOMETER M4P
 DAT.
 OBJ. DPP 16a
 #
 LT 4.8 MM
 RA 1.51 UM
 RZ 6.99 UM
 RMAX 10.88 UM
 RPM 2.33 UM
 PC<1.3> 010 /CM

PERTHOMETER M4P
 DAT.
 OBJ. DPP 16b
 #
 LT 4.8 MM
 RA 1.48 UM
 RZ 7.20 UM
 RMAX 10.88 UM
 RPM 2.48 UM
 PC<1.3> 012 /CM

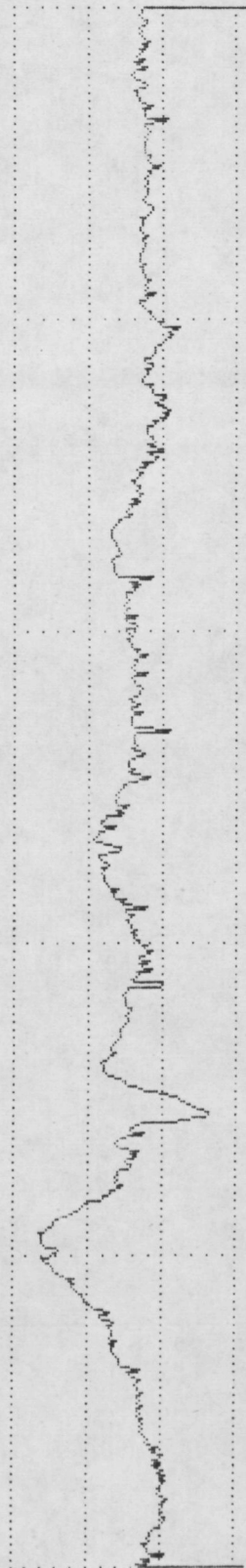
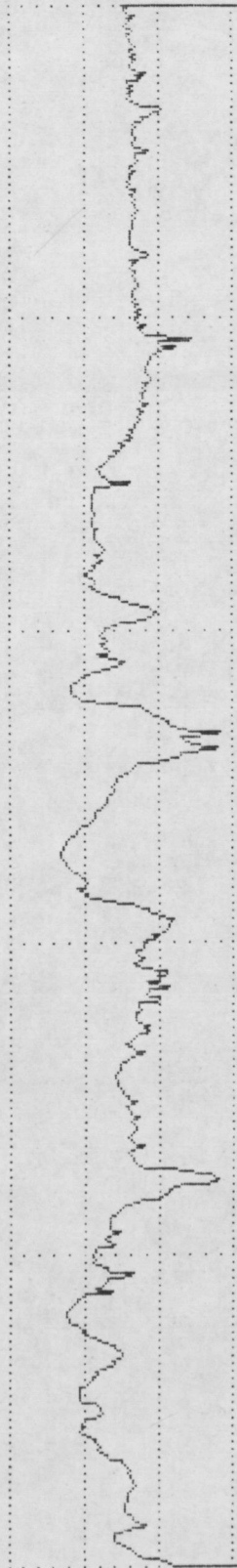
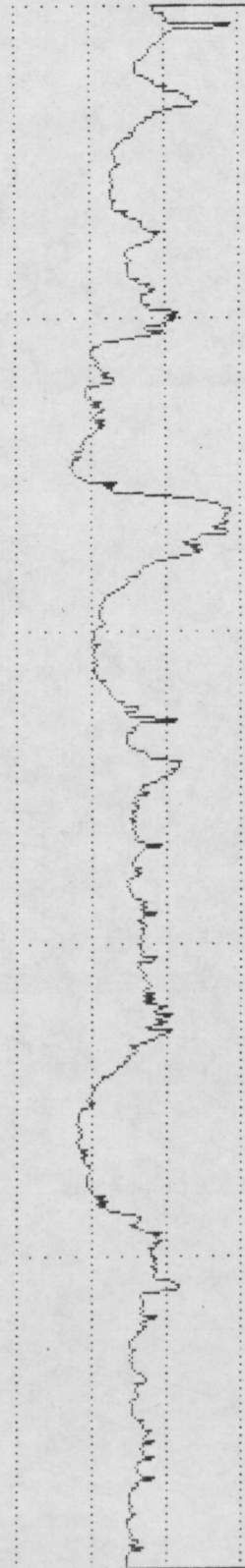
PERTHOMETER M4P
 DAT.
 OBJ. DPP 16c
 #
 LT 4.8 MM
 RA 1.33 UM
 RZ 6.57 UM
 RMAX 11.44 UM
 RPM 2.99 UM
 PC<1.3> 012 /CM

VER 5 UM
 HOR LC .80 MM

VER 5 UM
 HOR LC .80 MM

VER 5 UM
 HOR LC .80 MM

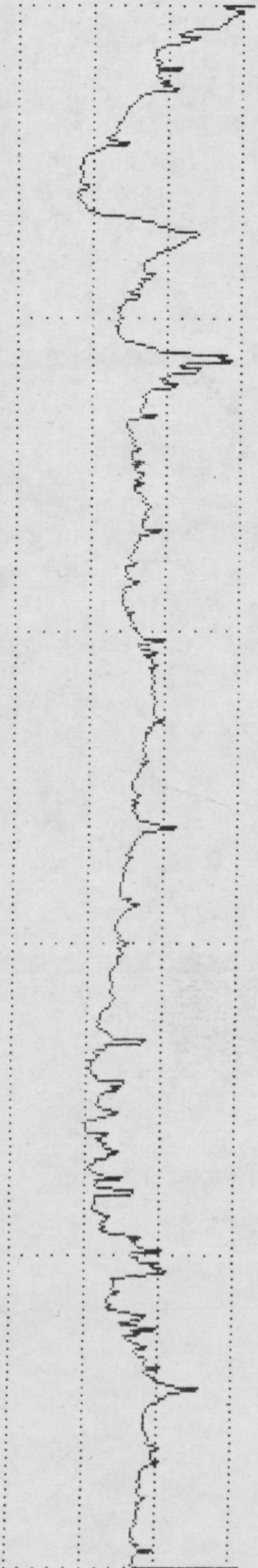
VER 5 UM
 HOR LC .80 MM



PERTHOMETER M4P
DAT.
OBJ. IPP 17a

LT 4.8 MM
RA 1.40 UM
RZ 6.86 UM
RMAX 11.12 UM
RPM 1.82 UM
PC<1.3> 015 /CM

VER 5 UM
HOR LC .80 MM



PERTHOMETER M4P
DAT.
OBJ. IPP 17b

LT 4.8 MM
RA 1.15 UM
RZ 6.30 UM
RMAX 9.84 UM
RPM 1.90 UM
PC<1.3> 015 /CM

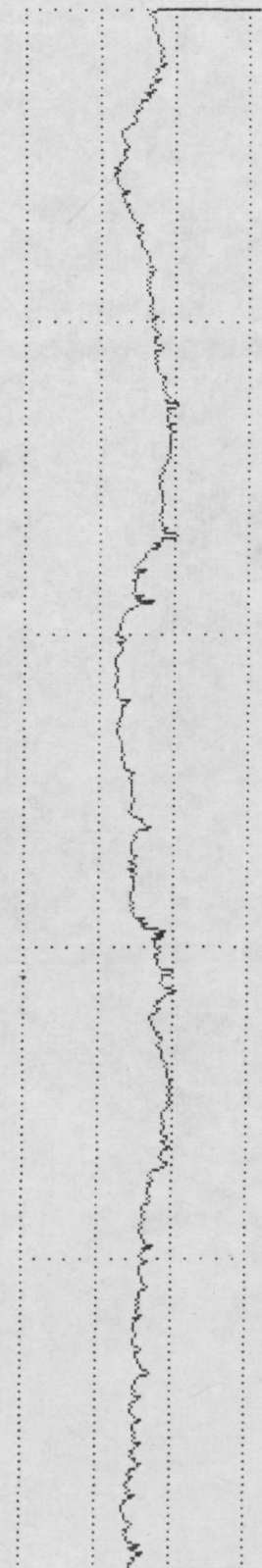
VER 5 UM
HOR LC .80 MM



PERTHOMETER M4P
DAT.
OBJ. IPP 17c

LT 4.8 MM
RA 0.90 UM
RZ 3.00 UM
RMAX 3.96 UM
RPM 1.06 UM
PC<1.3> 007 /CM

VER 5 UM
HOR LC .80 MM



PERTHOMETER M4P
DAT.
OBJ. IPP 18a

LT 4.8 MM
RA 1.44 UM
RZ 6.67 UM
RMAX 8.80 UM
RPM 2.54 UM
PC<1.3> 007 /CM

VER 5 UM
HOR LC .80 MM



PERTHOMETER M4P
DAT.
OBJ. IPP 18b

LT 4.8 MM
RA 0.93 UM
RZ 5.36 UM
RMAX 7.36 UM
RPM 1.79 UM
PC<1.3> 020 /CM

PERTHOMETER M4P
DAT.
OBJ. IPP 18c

LT 4.8 MM
RA 0.96 UM
RZ 4.81 UM
RMAX 11.28 UM
RPM 2.06 UM
PC<1.3> 017 /CM

PERTHOMETER M4P
DAT.
OBJ. IPP 19a

LT 4.8 MM
RA 0.78 UM
RZ 5.24 UM
RMAX 7.44 UM
RPM 1.53 UM
PC<1.3> 027 /CM

PERTHOMETER M4P
DAT.
OBJ. IPP 19b

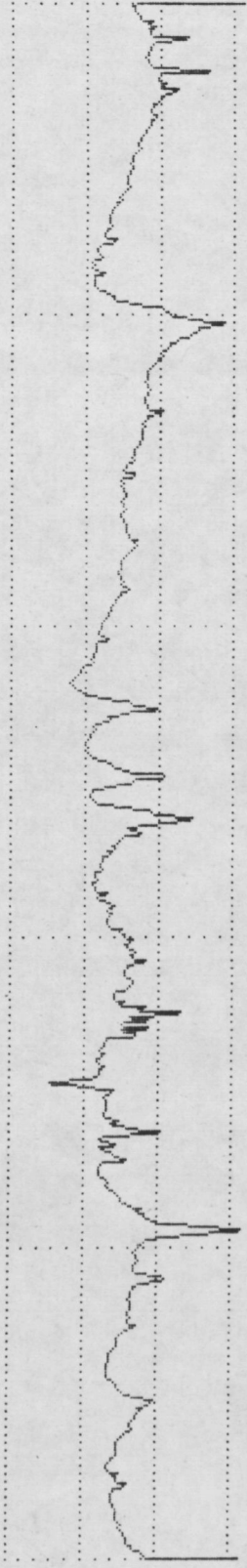
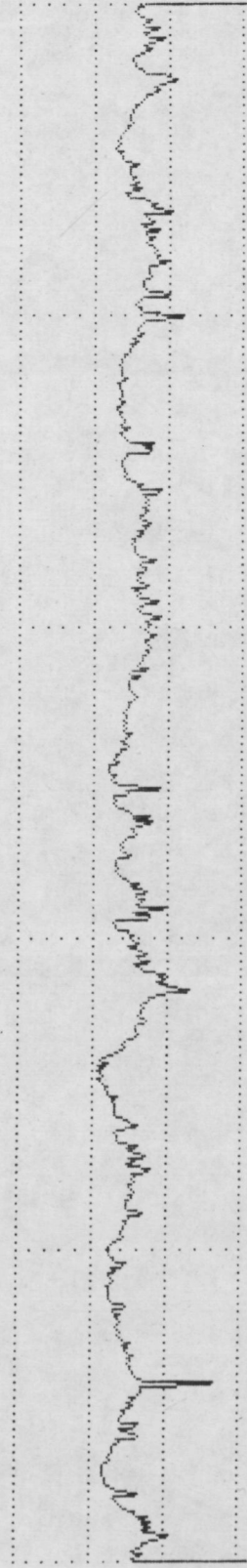
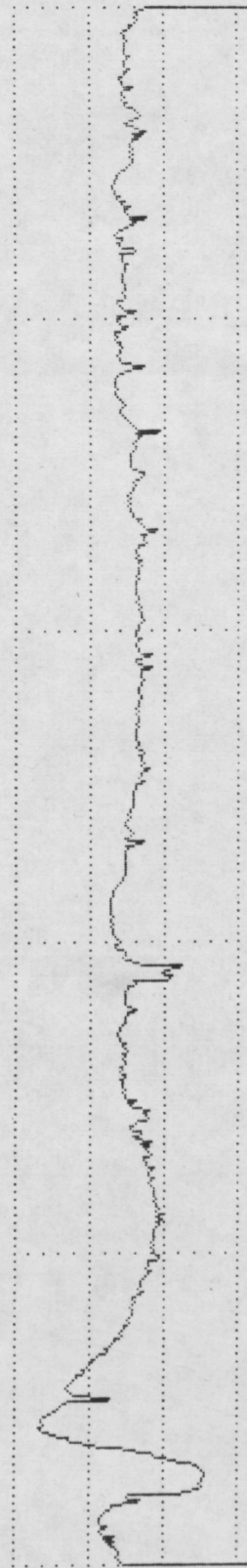
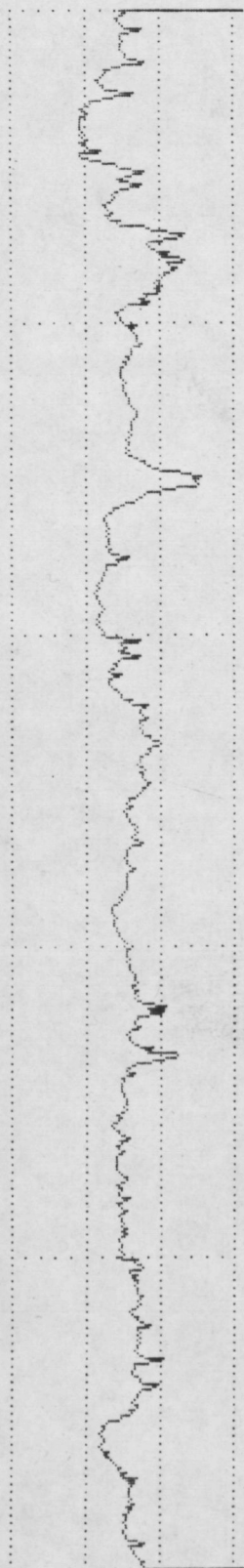
LT 4.8 MM
RA 1.26 UM
RZ 8.36 UM
RMAX 13.44 UM
RPM 2.62 UM
PC<1.3> 022 /CM

VER 5 UM
HOR LC .80 MM

VER 5 UM
HOR LC .80 MM

VER 5 UM
HOR LC .80 MM

VER 5 UM
HOR LC .80 MM



PERTHOMETER M4P
DAT. IPP
OBJ. 19c

LT 4.8 MM
RA 2.33 UM
RZ 7.53 UM
RMAX 11.12 UM
RPM 3.50 UM
PC<1.3> 012 /CM

PERTHOMETER M4P
DAT. IPP
OBJ. 20a

LT 4.8 MM
RA 1.64 UM
RZ 7.34 UM
RMAX 11.04 UM
RPM 3.31 UM
PC<1.3> 027 /CM

PERTHOMETER M4P
DAT. IPP
OBJ. 20b

LT 4.8 MM
RA 2.80 UM
RZ 8.38 UM
RMAX 9.60 UM
RPM 3.90 UM
PC<1.3> 007 /CM

PERTHOMETER M4P
DAT. IPP
OBJ. 20c

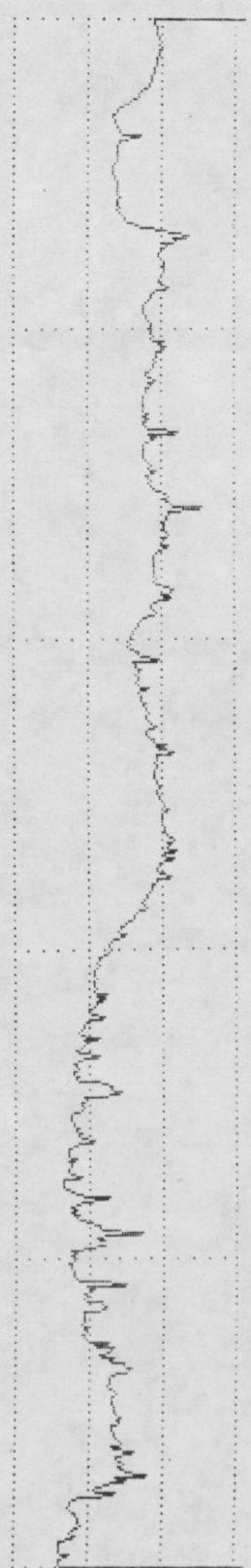
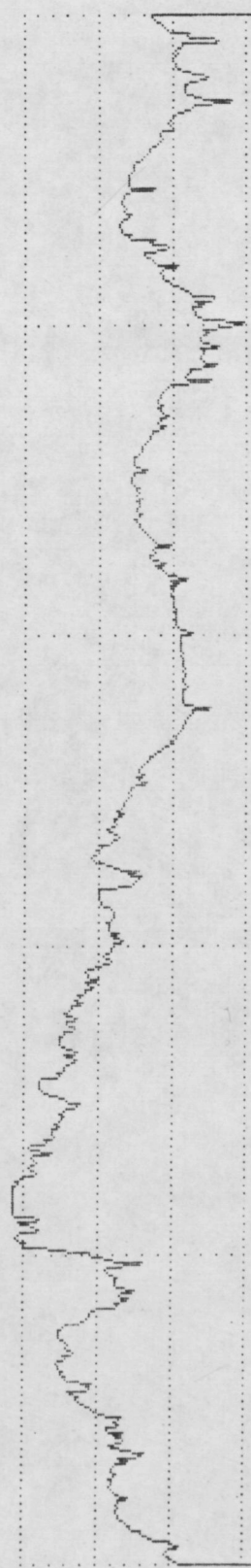
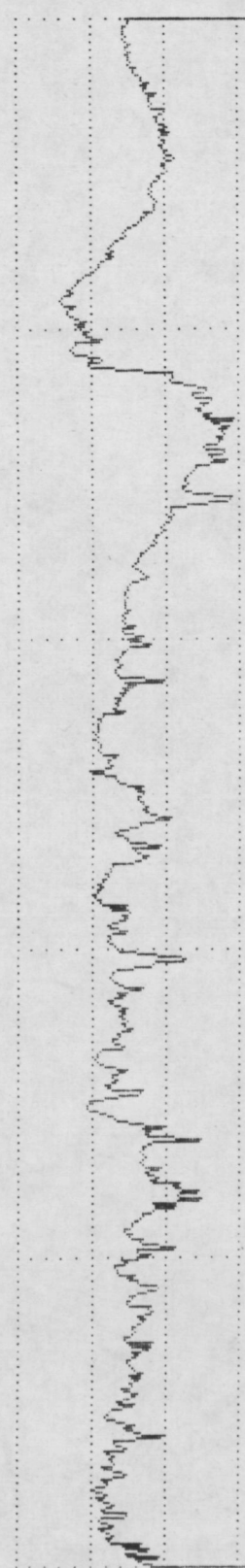
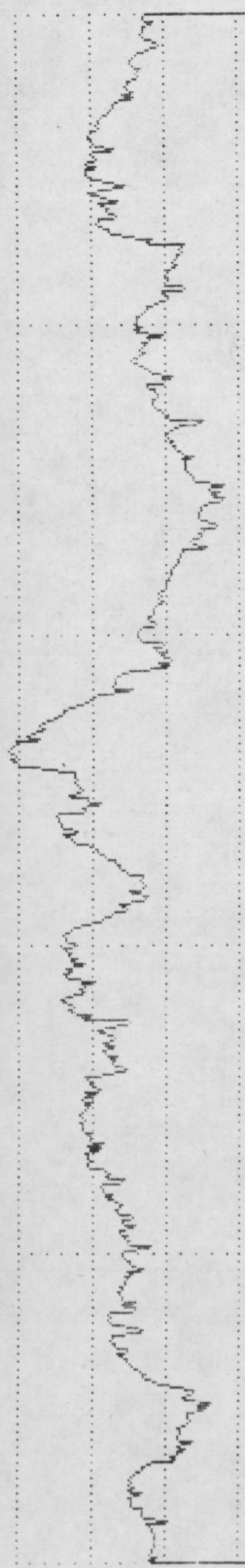
LT 4.8 MM
RA 1.96 UM
RZ 5.23 UM
RMAX 5.84 UM
RPM 2.19 UM
PC<1.3> 012 /CM

VER 5 UM
HOR LC .80 MM

VER 5 UM
HOR LC .80 MM

VER 5 UM
HOR LC .80 MM

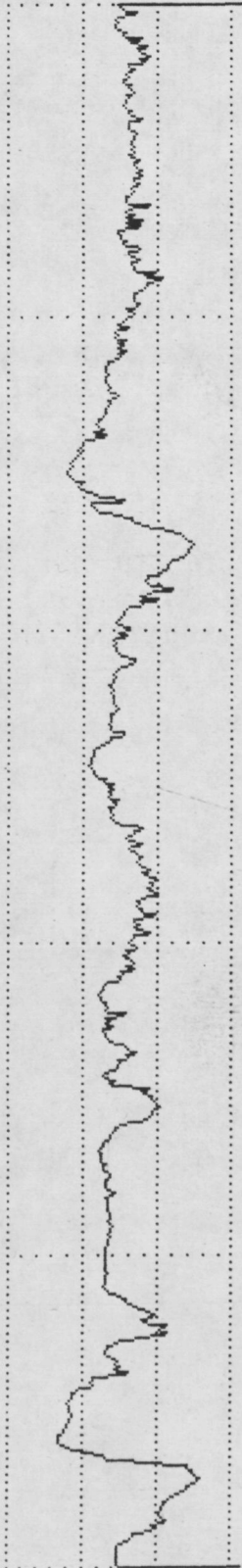
VER 5 UM
HOR LC .80 MM



PERTHOMETER M4P
DAT.
OBJ. VIP 1a

LT 4.8 MM
RA 1.29 UM
RZ 6.00 UM
RMAX 9.52 UM
RPM 2.38 UM
PC<1.3> 015 /CM

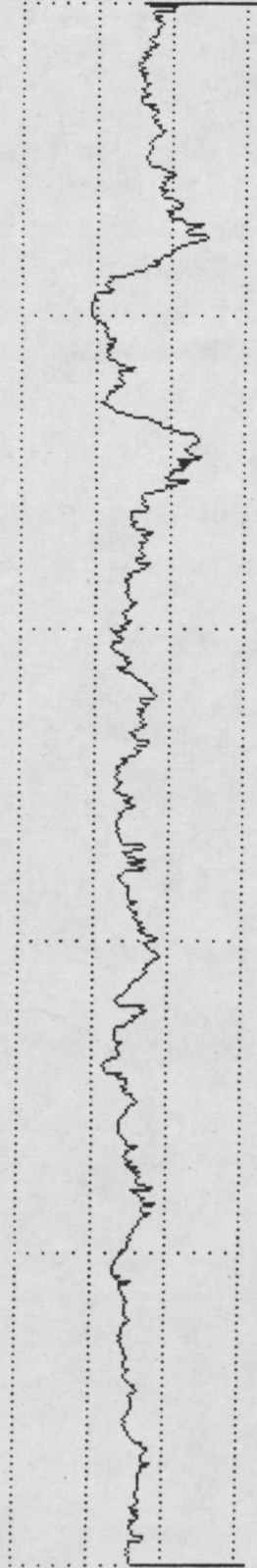
VER 5 UM
HOR LC .80 MM



PERTHOMETER M4P
DAT.
OBJ. VIP 1b

LT 4.8 MM
RA 0.94 UM
RZ 4.88 UM
RMAX 7.92 UM
RPM 2.03 UM
PC<1.3> 017 /CM

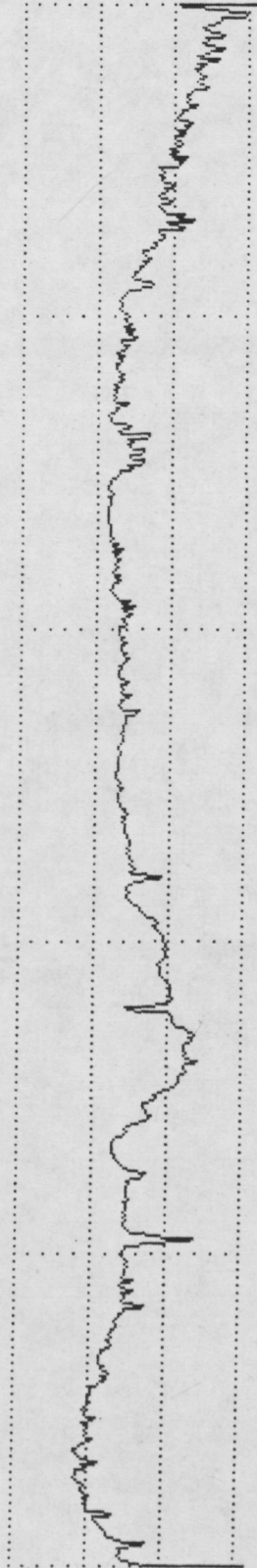
VER 5 UM
HOR LC .80 MM



PERTHOMETER M4P
DAT.
OBJ. VIP 1c

LT 4.8 MM
RA 1.56 UM
RZ 5.07 UM
RMAX 8.48 UM
RPM 1.84 UM
PC<1.3> 010 /CM

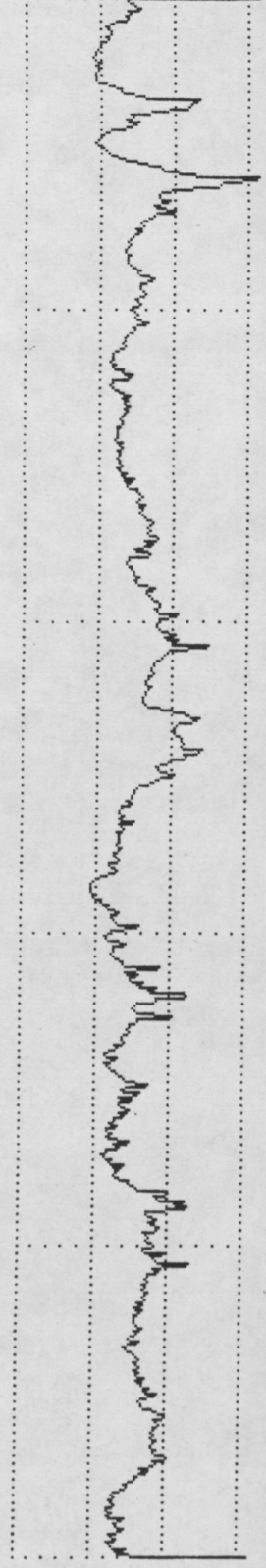
VER 5 UM
HOR LC .80 MM



PERTHOMETER M4P
DAT.
OBJ. VIP 2a

LT 4.8 MM
RA 1.26 UM
RZ 7.02 UM
RMAX 11.44 UM
RPM 2.25 UM
PC<1.3> 020 /CM

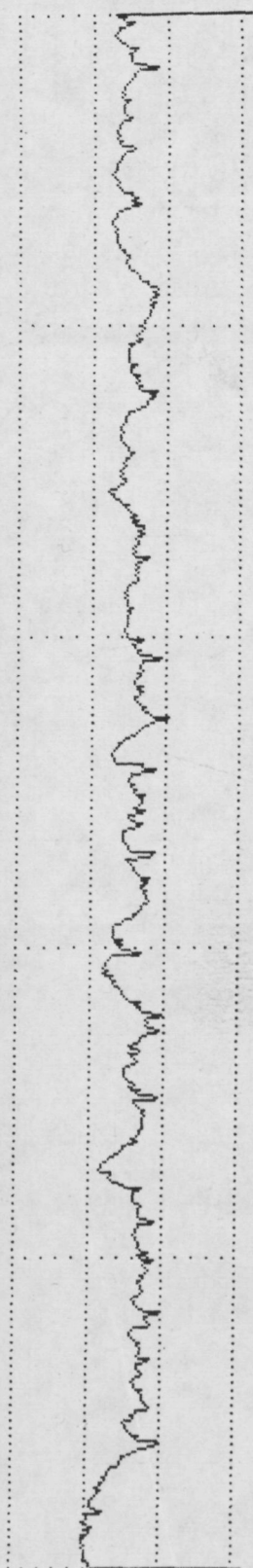
VER 5 UM
HOR LC .80 MM



PERTHOMETER M4P
DAT.
OBJ. VIP 2b

LT 4.8 MM
RA 0.78 UM
RZ 3.85 UM
RMAX 5.04 UM
RPM 1.74 UM
PC<1.3> 017 /CM

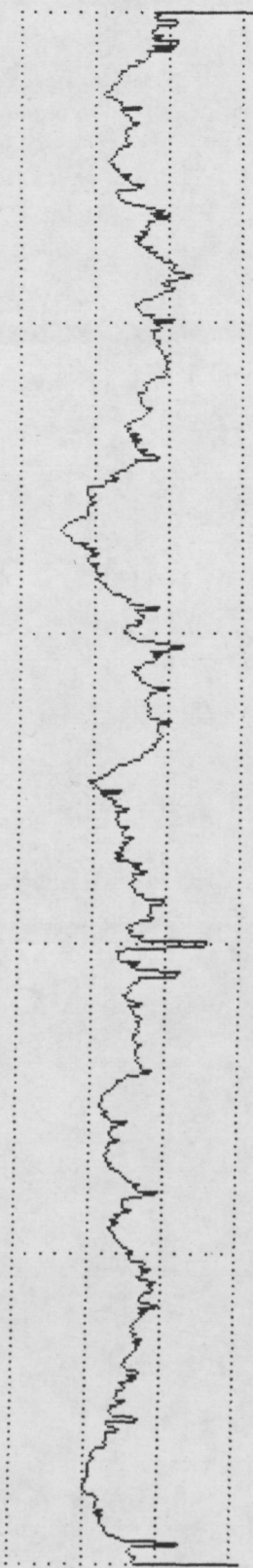
VER 5 UM
HOR LC .80 MM



PERTHOMETER M4P
DAT.
OBJ. VIP 2c

LT 4.8 MM
RA 1.17 UM
RZ 6.99 UM
RMAX 8.00 UM
RPM 2.86 UM
PC<1.3> 022 /CM

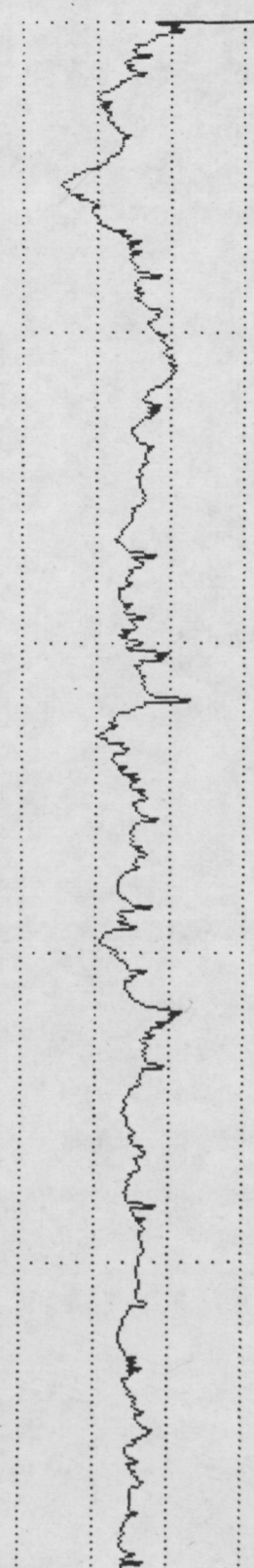
VER 5 UM
HOR LC .80 MM



PERTHOMETER M4P
DAT.
OBJ. VIP 3a

LT 4.8 MM
RA 0.82 UM
RZ 5.10 UM
RMAX 8.48 UM
RPM 2.19 UM
PC<1.3> 025 /CM

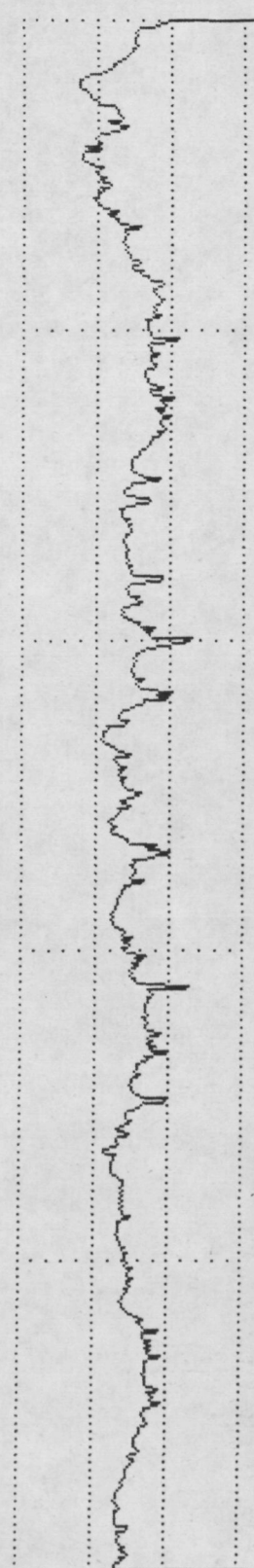
VER 5 UM
HOR LC .80 MM



PERTHOMETER M4P
DAT.
OBJ. VJA 3b

LT 4.8 MM
RA 0.95 UM
RZ 5.07 UM
RMAX 6.04 UM
RPM 1.94 UM
PC<1.3> 020 /CM

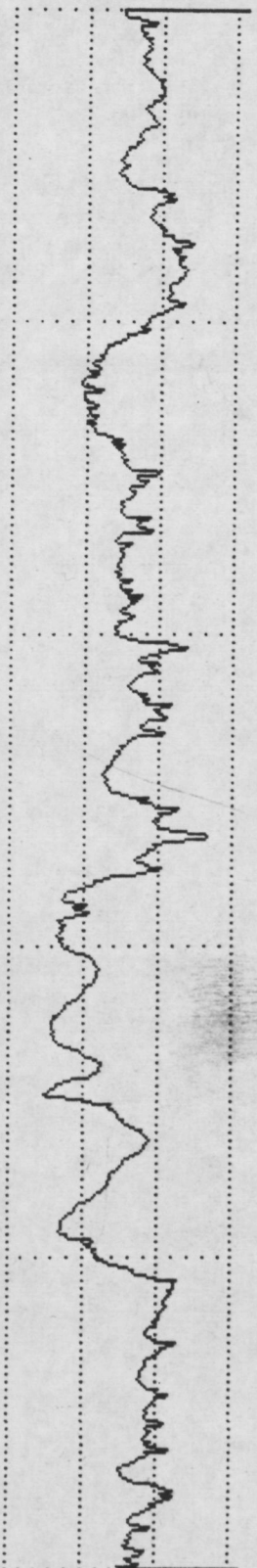
VER 5 UM
HOR LC .80 MM



PERTHOMETER M4P
DAT.
OBJ. VIP 3c

LT 4.8 MM
RA 1.83 UM
RZ 6.52 UM
RMAX 10.08 UM
RPM 2.91 UM
PC<1.3> 010 /CM

VER 5 UM
HOR LC .80 MM



PERTHOMETER M4P
DAT.
OBJ. VIP 4a

LT 4.8 MM
RA 1.84 UM
RZ 8.44 UM
RMAX 13.76 UM
RPM 3.00 UM
PC<1.3> 022 /CM

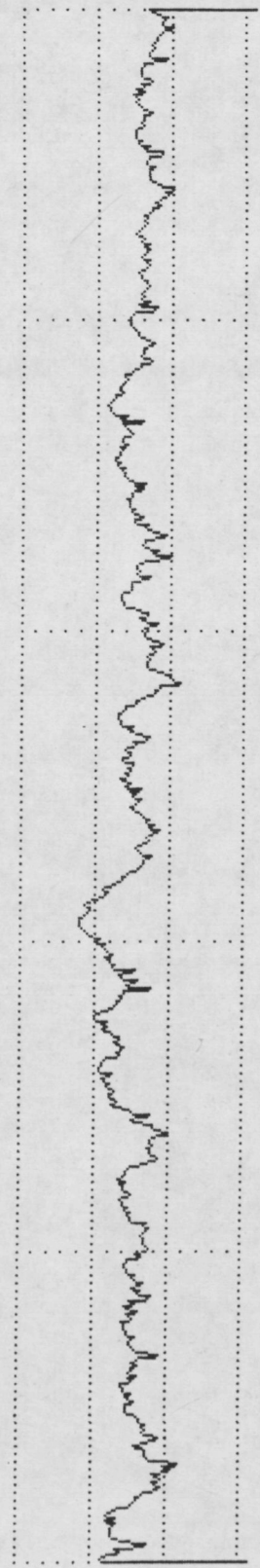
VER 5 UM
HOR LC .80 MM



PERTHOMETER M4P
DAT.
OBJ. VIP 4b

LT 4.8 MM
RA 0.87 UM
RZ 4.73 UM
RMAX 6.64 UM
RPM 2.04 UM
PC<1.3> 022 /CM

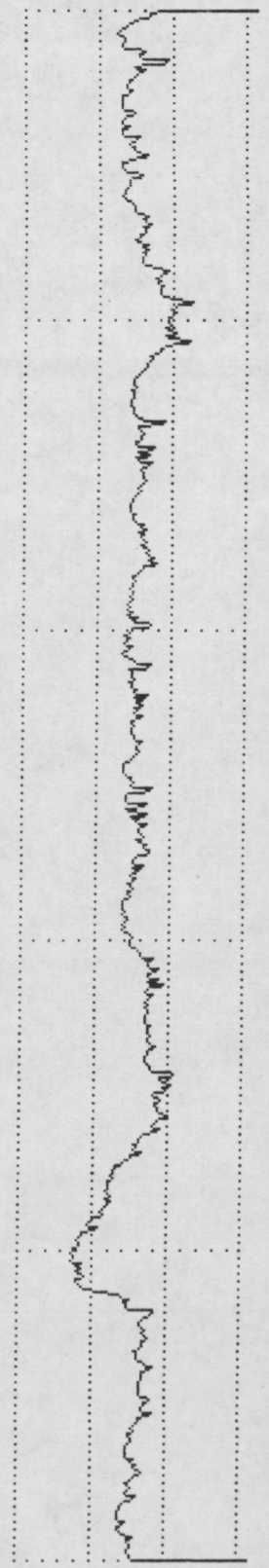
VER 5 UM
HOR LC .80 MM



PERTHOMETER M4P
DAT.
OBJ. VIP 4c

LT 4.8 MM
RA 0.81 UM
RZ 4.64 UM
RMAX 6.48 UM
RPM 2.08 UM
PC<1.3> 017 /CM

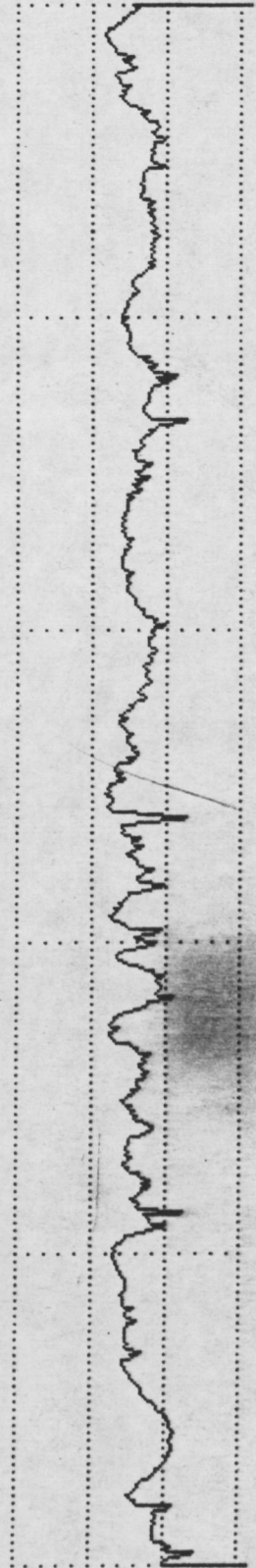
VER 5 UM
HOR LC .80 MM



PERTHOMETER M4P
DAT.
OBJ. VIP 5a

LT 4.8 MM
RA 0.91 UM
RZ 4.80 UM
RMAX 5.44 UM
RPM 1.24 UM
PC<1.3> 012 /CM

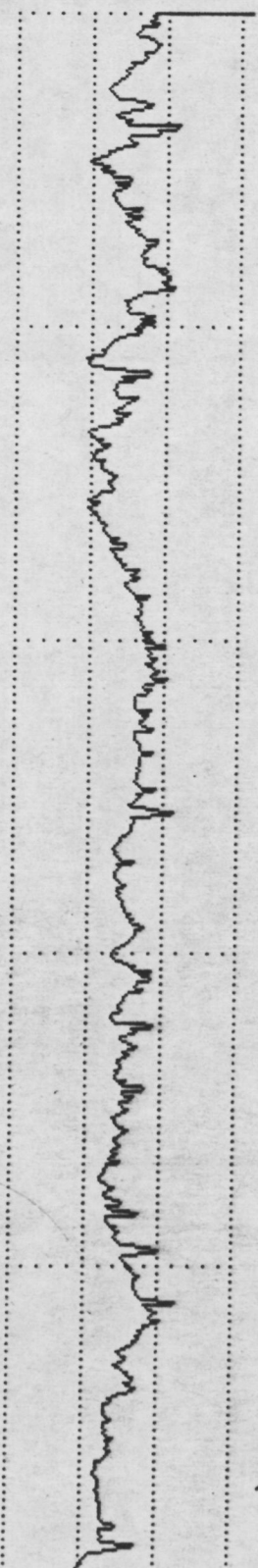
VER 5 UM
HOR LC .80 MM



PERTHOMETER M4P
DAT.
OBJ. VIP 5b

LT 4.8 MM
RA 0.94 UM
RZ 4.87 UM
RMAX 6.32 UM
RPM 2.13 UM
PC<1.3> 030 /CM

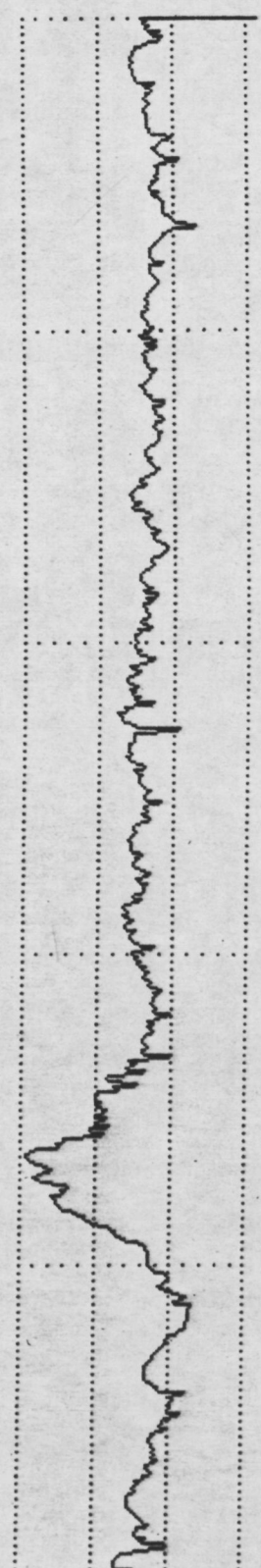
VER 5 UM
HOR LC .80 MM



PERTHOMETER M4P
DAT.
OBJ. VIP 5c

LT 4.8 MM
RA 1.23 UM
RZ 5.13 UM
RMAX 9.76 UM
RPM 2.09 UM
PC<1.3> 015 /CM

VER 5 UM
HOR LC .80 MM



PERTHOMETER M4P
DAT.
OBJ. VIP 6a

LT 4.8 MM
RA 1.18 UM
RZ 6.91 UM
RMAX 11.36 UM
RPM 2.65 UM
PC<1.3> 027 /CM

VER 5 UM
HOR LC .80 MM



PERTHOMETER M4P
DAT.
OBJ. VIP6b

LT 4.8 MM
RA 1.01 UM
RZ 5.53 UM
RMAX 7.48 UM
RPM 2.25 UM
PC<1.3> 025 /CM

VER 5 UM
HOR LC .80 MM

PERTHOMETER M4P
DAT.
OBJ. VIP6c

LT 4.8 MM
RA 0.69 UM
RZ 3.64 UM
RMAX 4.40 UM
RPM 1.12 UM
PC<1.3> 025 /CM

VER 5 UM
HOR LC .80 MM

PERTHOMETER M4P
DAT.
OBJ. VIP7a

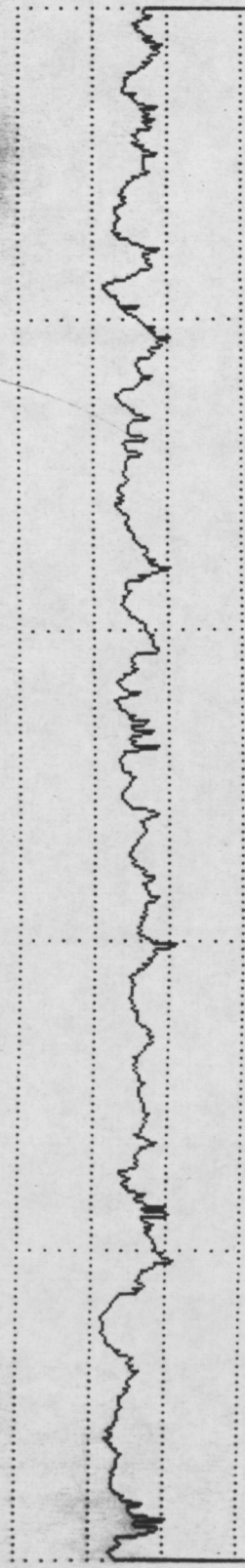
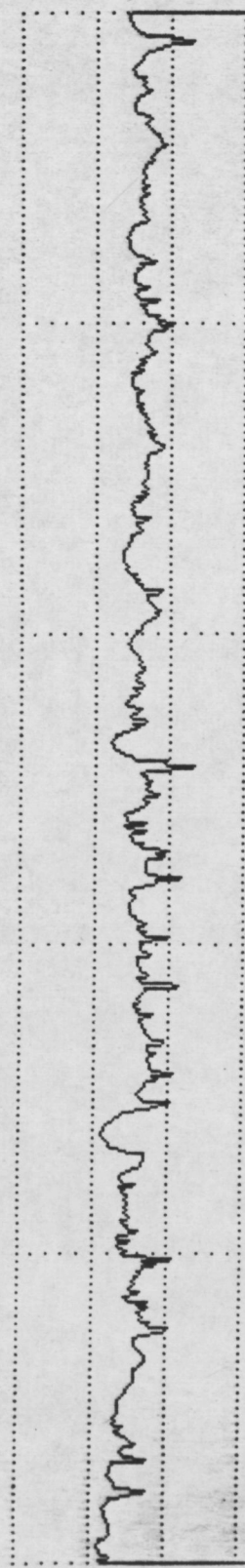
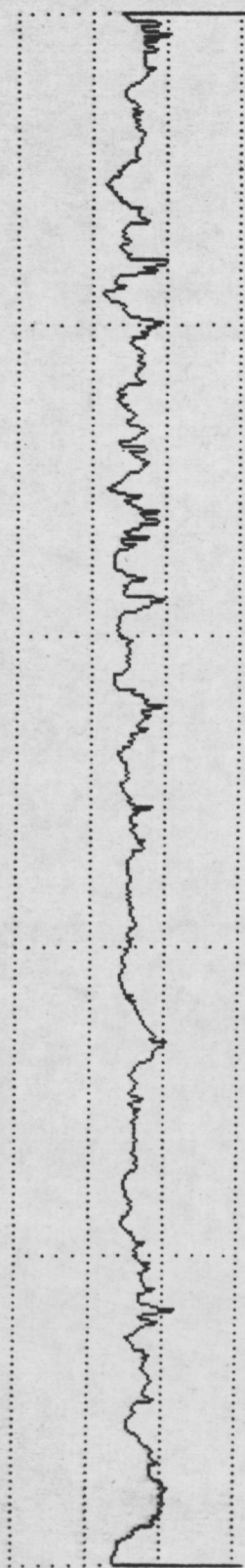
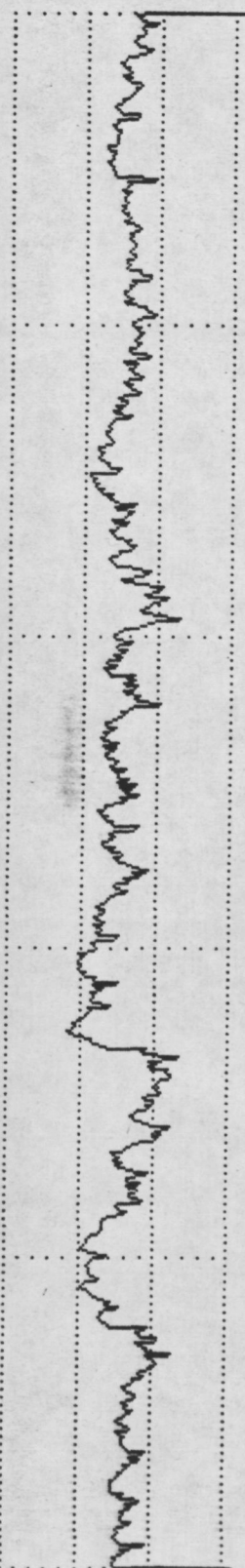
LT 4.8 MM
RA 0.72 UM
RZ 4.63 UM
RMAX 5.52 UM
RPM 1.37 UM
PC<1.3> 017 /CM

VER 5 UM
HOR LC .80 MM

PERTHOMETER M4P
DAT.
OBJ. VIP7b

LT 4.8 MM
RA 0.74 UM
RZ 3.82 UM
RMAX 4.84 UM
RPM 1.33 UM
PC<1.3> 027 /CM

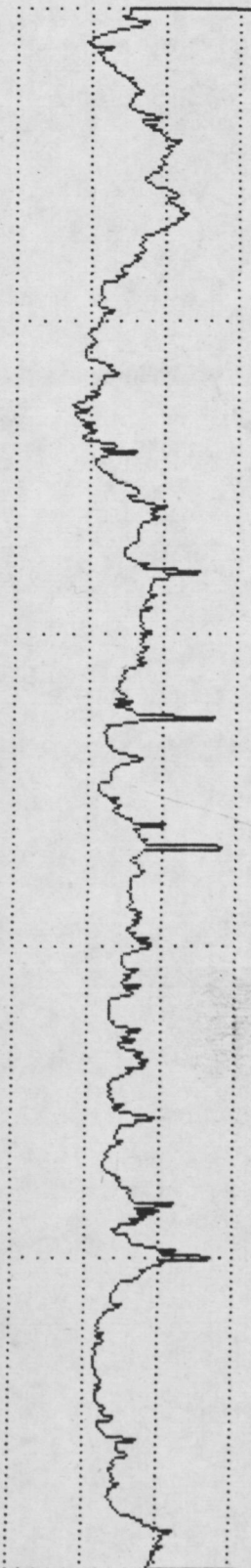
VER 5 UM
HOR LC .80 MM



PERTHOMETER M4P
DAT.
OBJ. VSP 7c

LT 4.8 MM
RA 1.26 UM
RZ 7.71 UM
RMAX 8.64 UM
RPM 2.38 UM
PC<1.3> 027 /CM

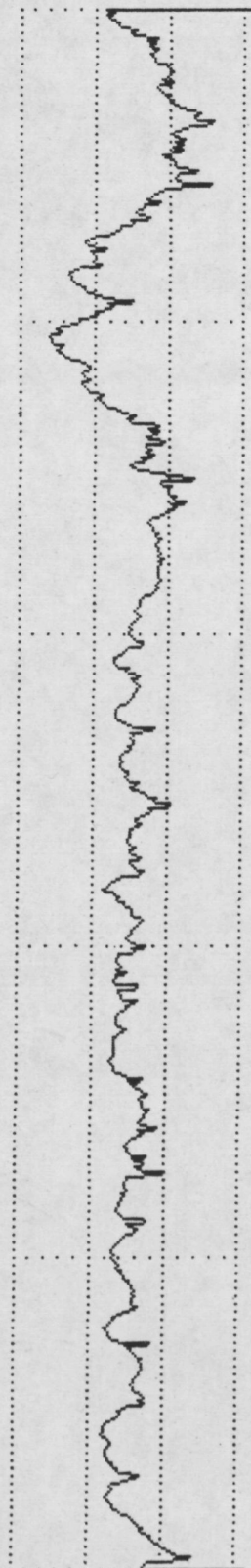
VER 5 UM
HOR LC .80 MM



PERTHOMETER M4P
DAT.
OBJ. VSP 8a

LT 4.8 MM
RA 1.29 UM
RZ 6.72 UM
RMAX 9.84 UM
RPM 2.96 UM
PC<1.3> 025 /CM

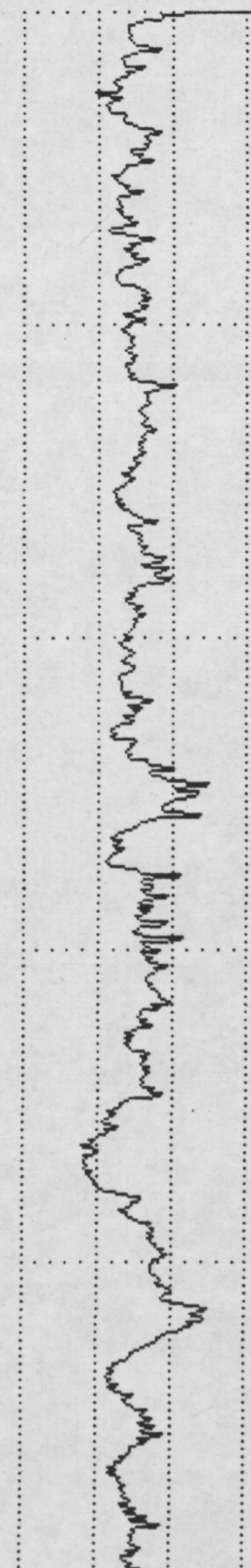
VER 5 UM
HOR LC .80 MM



PERTHOMETER M4P
DAT.
OBJ. VSP 8b

LT 4.8 MM
RA 1.00 UM
RZ 5.96 UM
RMAX 7.04 UM
RPM 2.38 UM
PC<1.3> 035 /CM

VER 5 UM
HOR LC .80 MM



PERTHOMETER M4P
DAT.
OBJ. VSP 8c

LT 4.8 MM
RA 1.22 UM
RZ 5.28 UM
RMAX 7.12 UM
RPM 1.84 UM
PC<1.3> 025 /CM

VER 5 UM
HOR LC .80 MM

