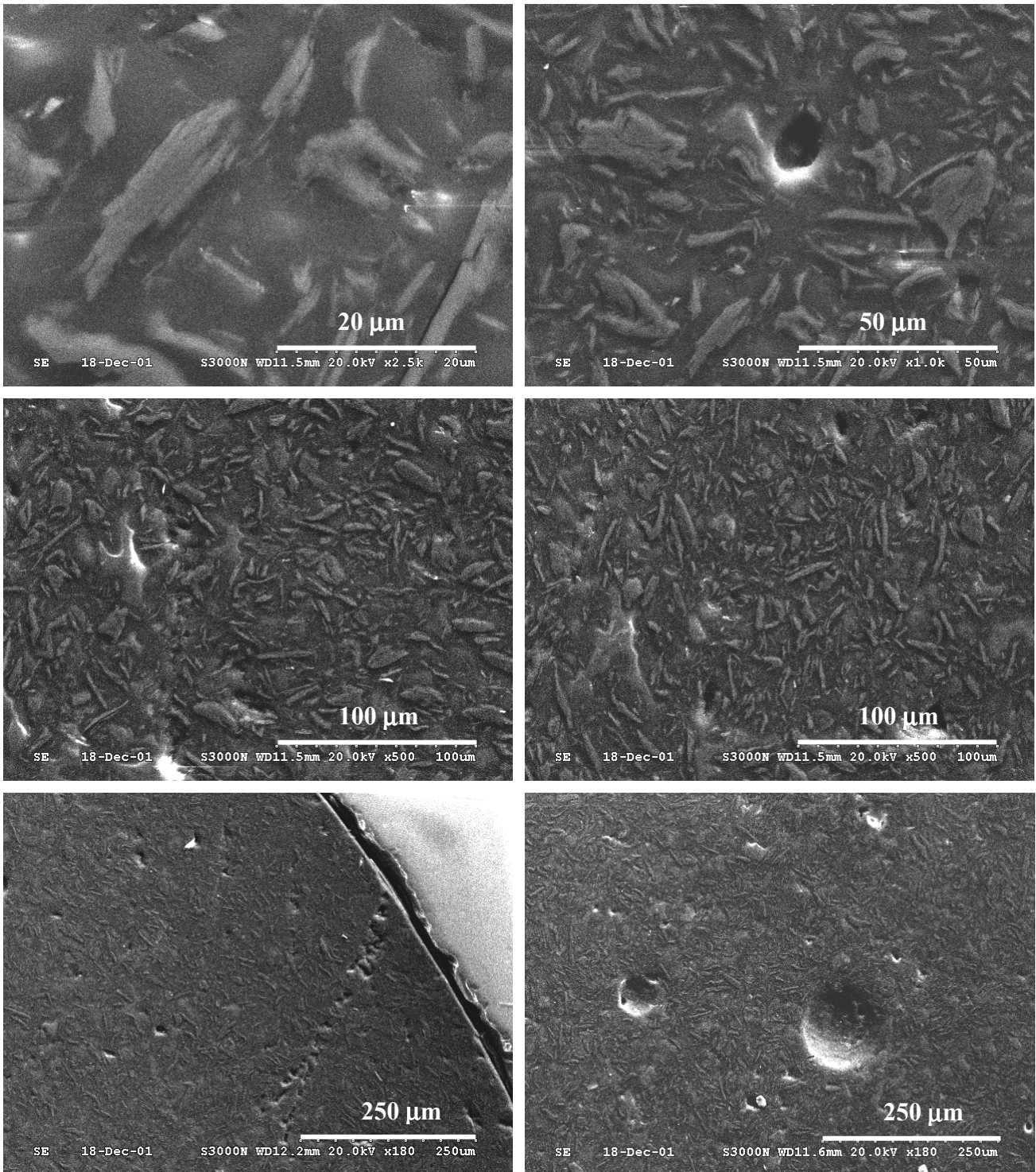


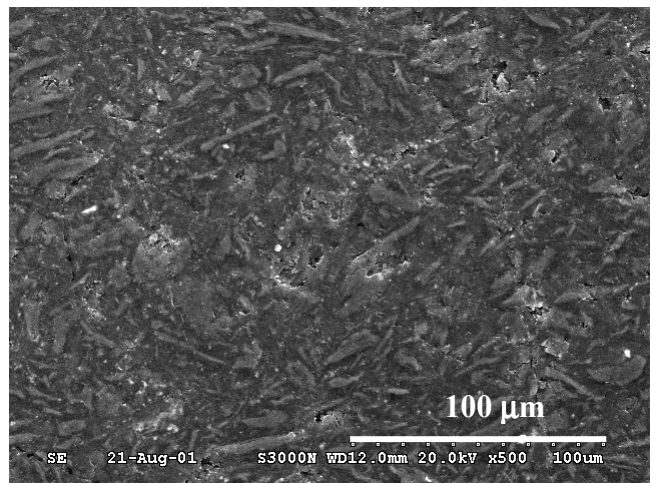
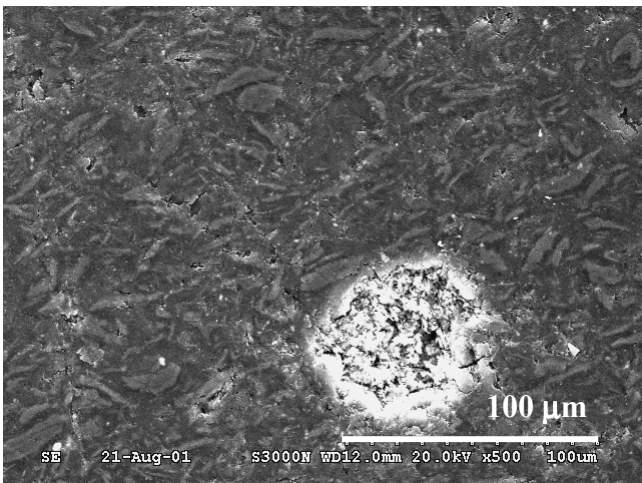
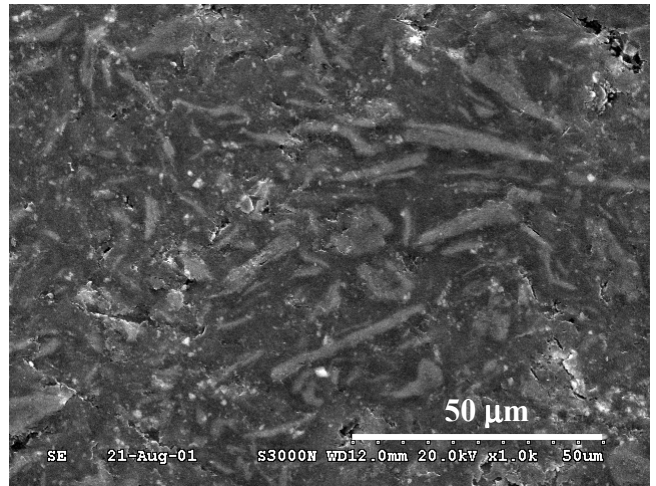
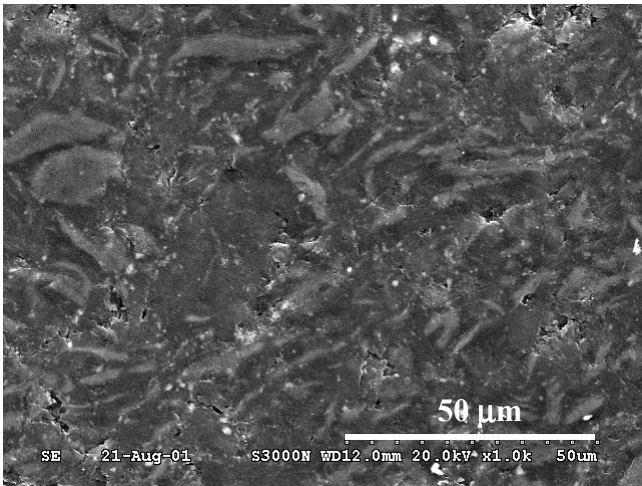
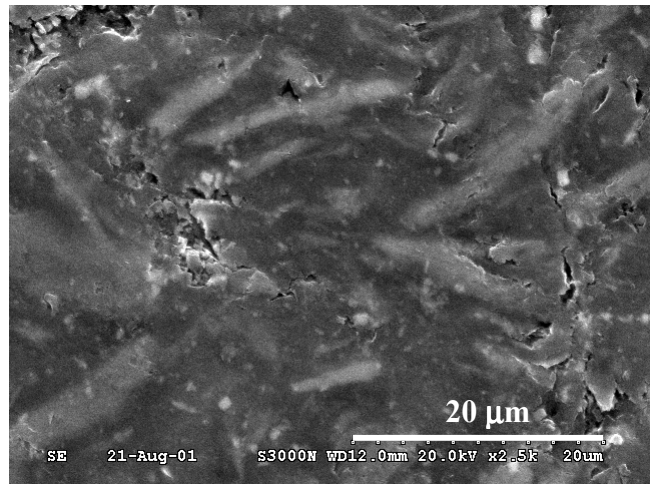
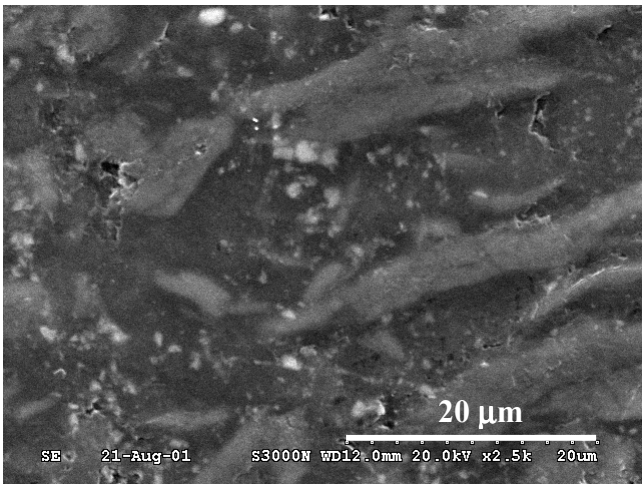
APÈNDIX 1

Selecció d'imatges obtingudes mitjançant microscopia electrònica (sem) de cada un dels diferents compòsits estudiats amb diferents percentatges de grafit

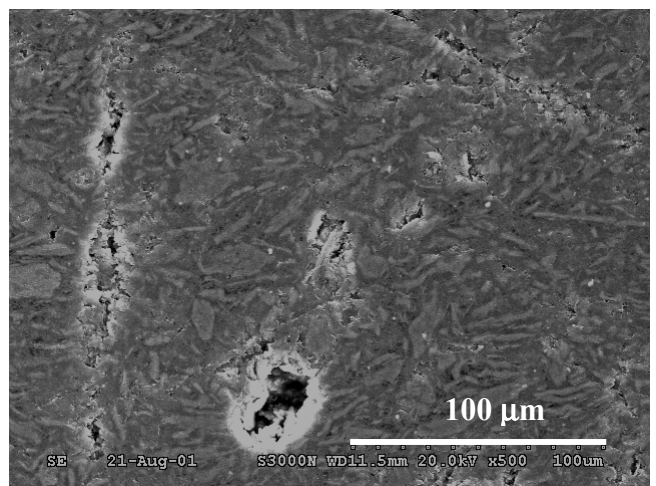
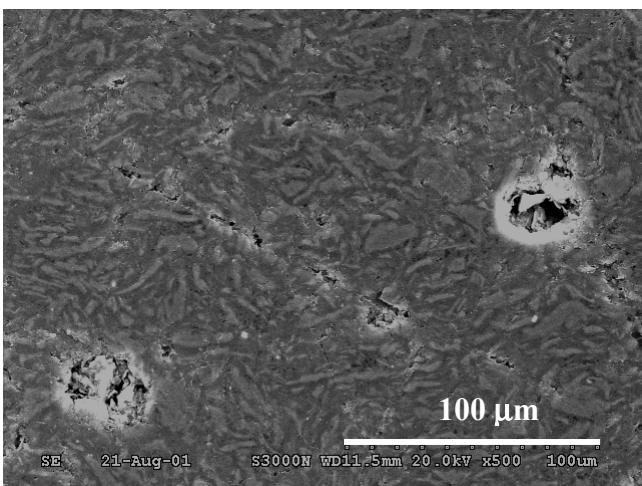
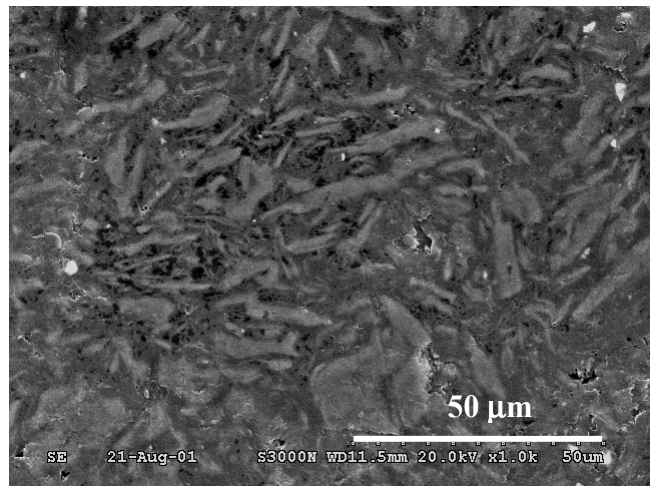
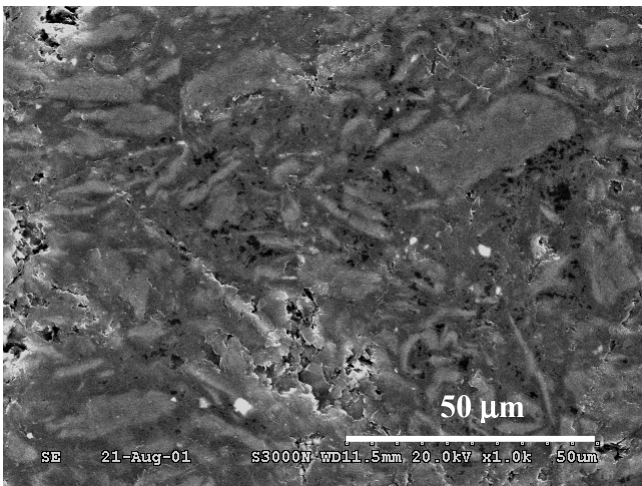
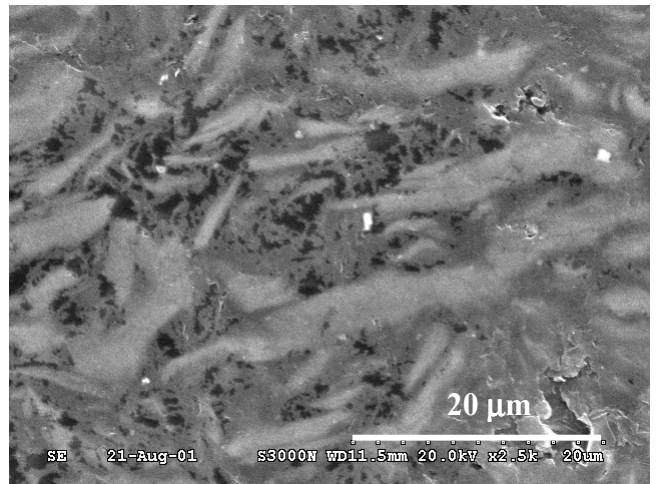
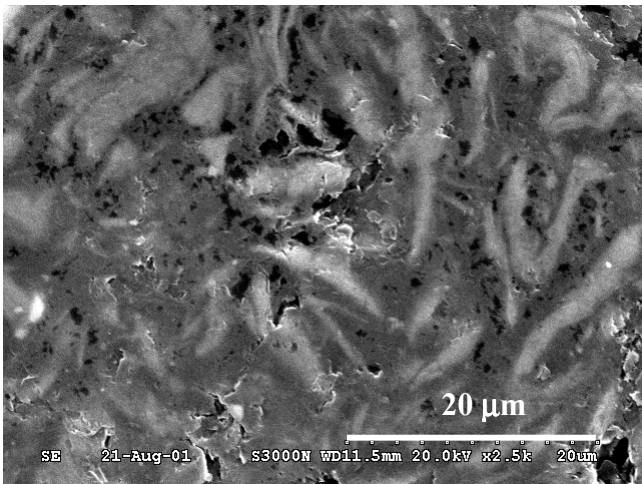
Totes les imatges es van obtenir amb un potencial d'acceleració de 20 keV



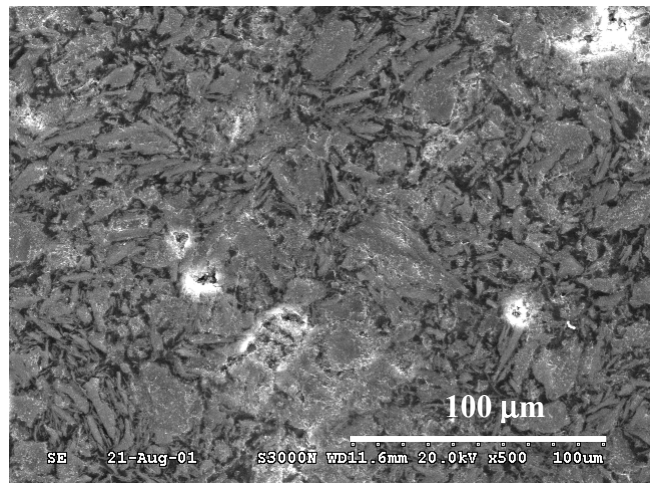
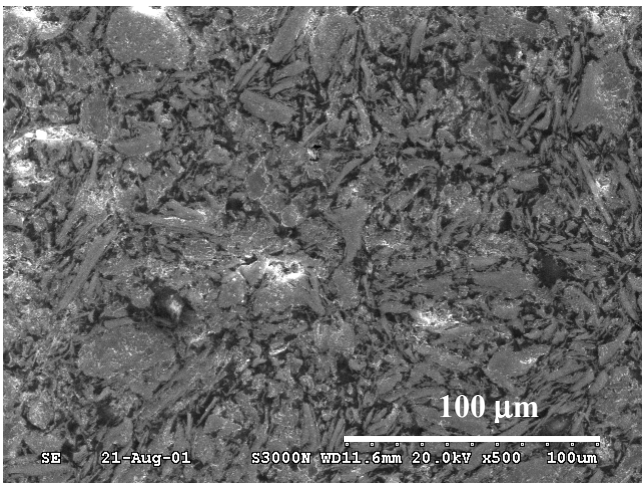
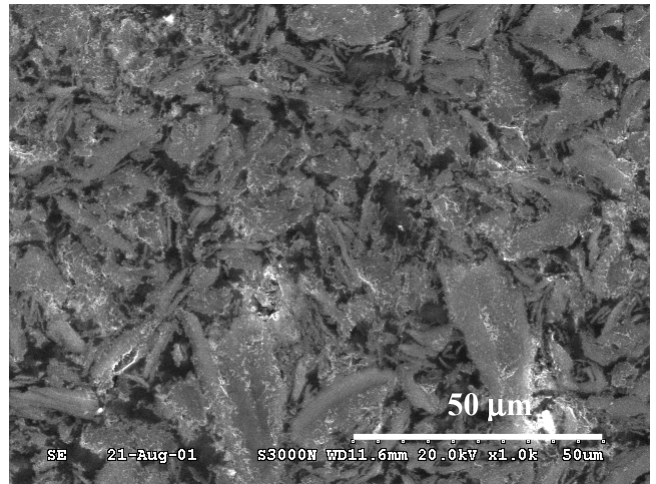
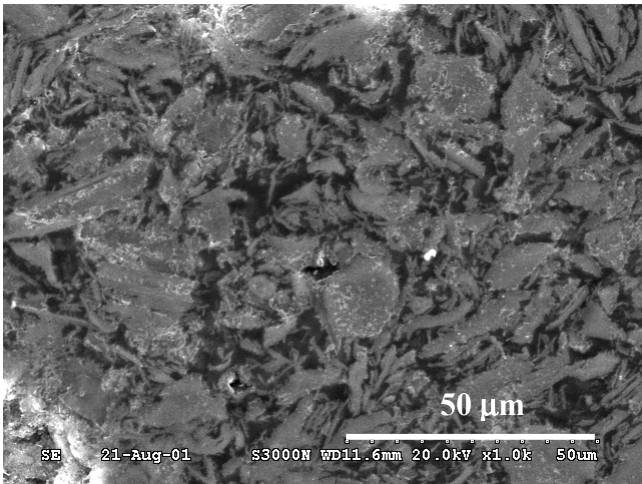
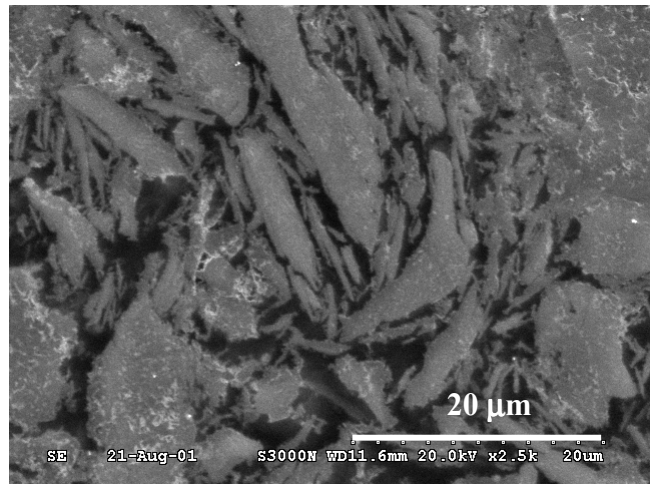
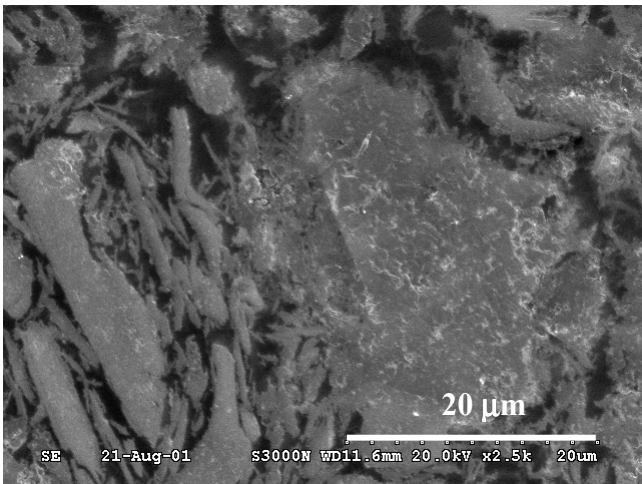
(A1)-1.A. Compòsit d'Araldite-M/HY5162 amb 30% en pes de grafit.



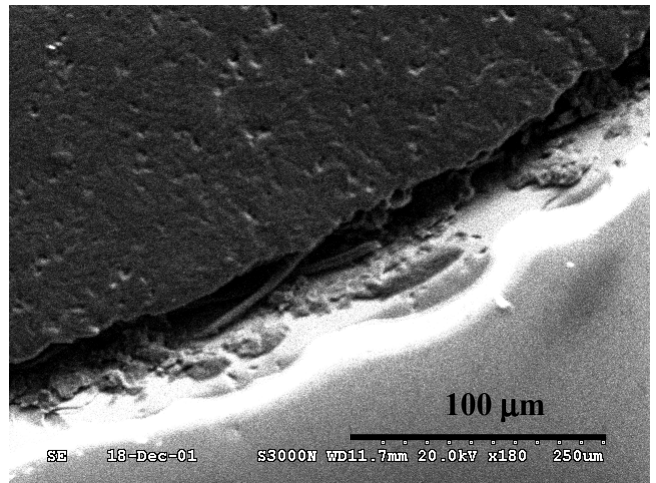
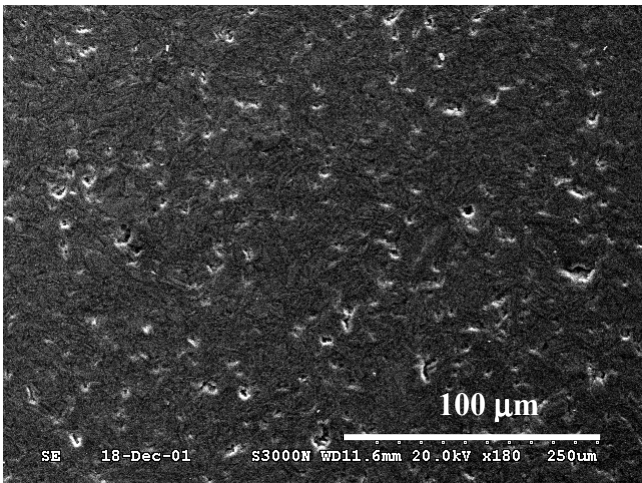
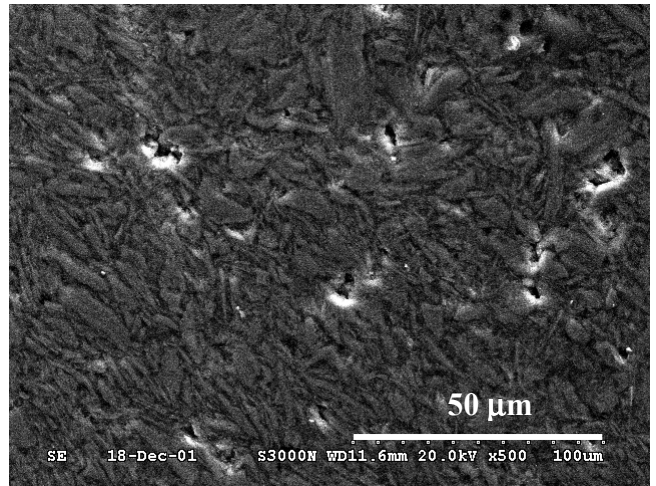
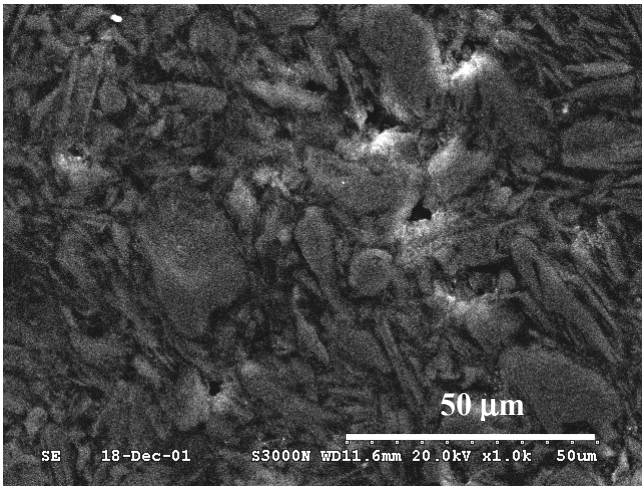
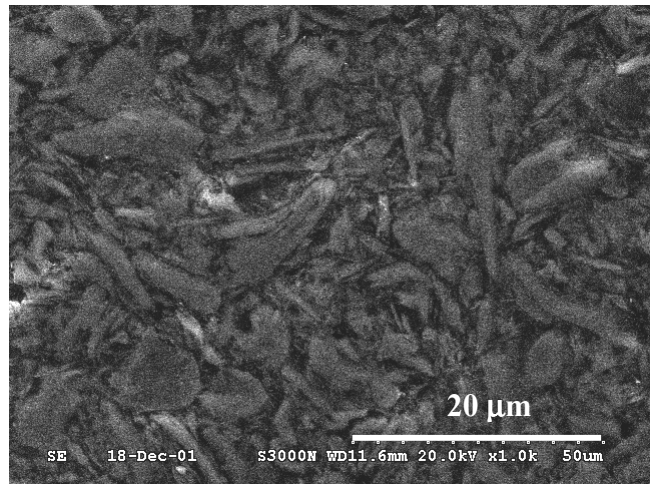
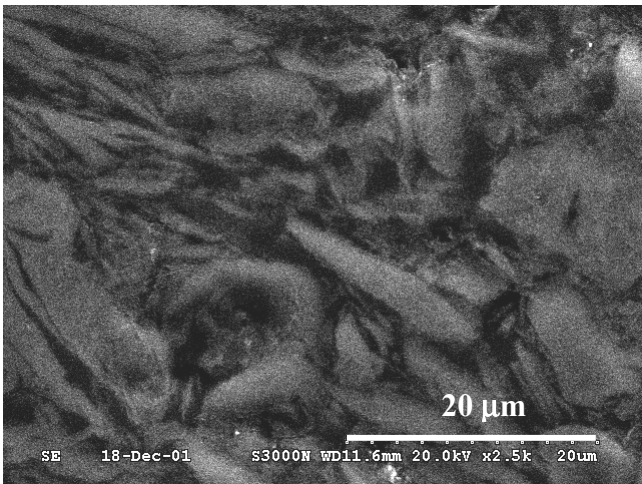
(A1)-I.B. Compòsit d'Araldite-M/HY5162 amb 40% en pes de grafit.



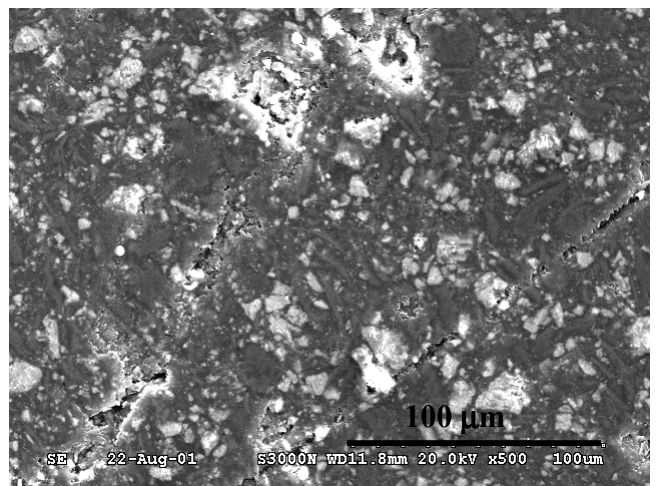
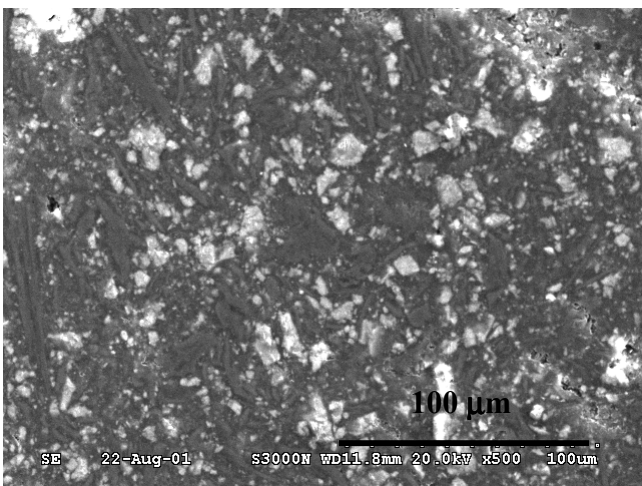
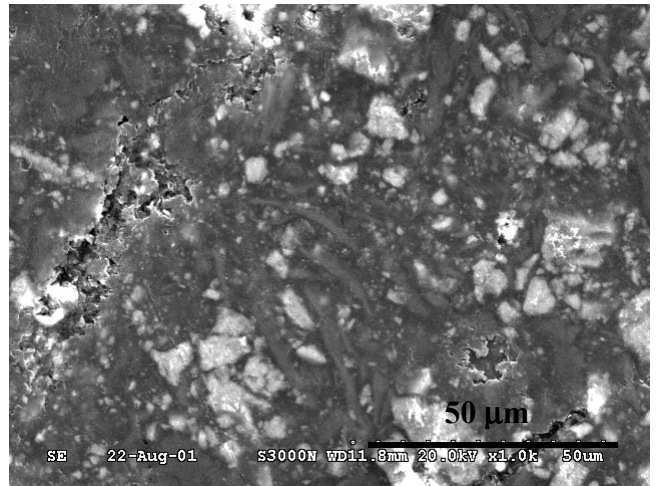
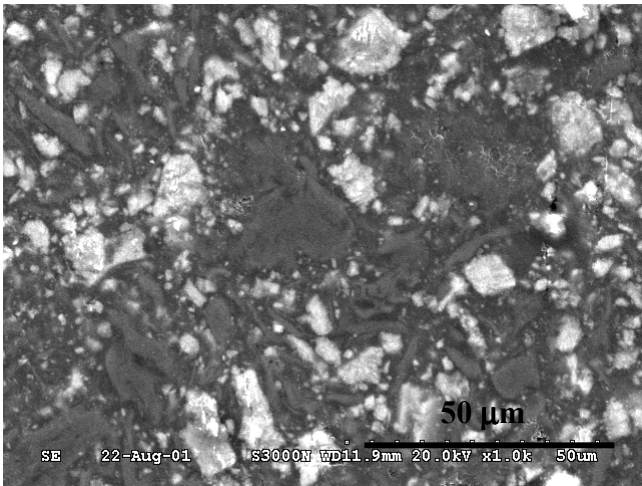
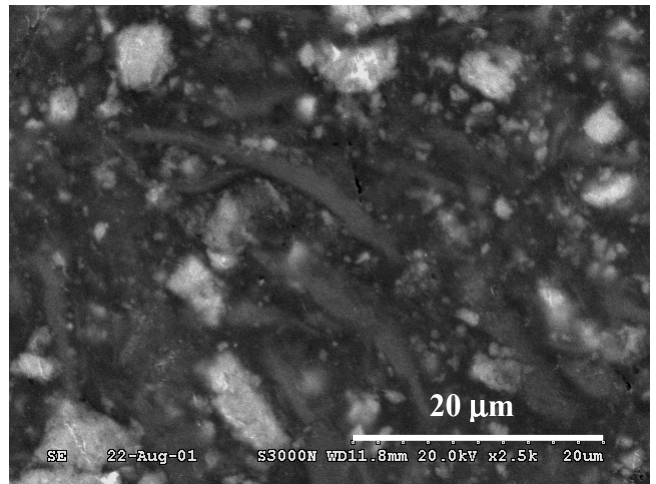
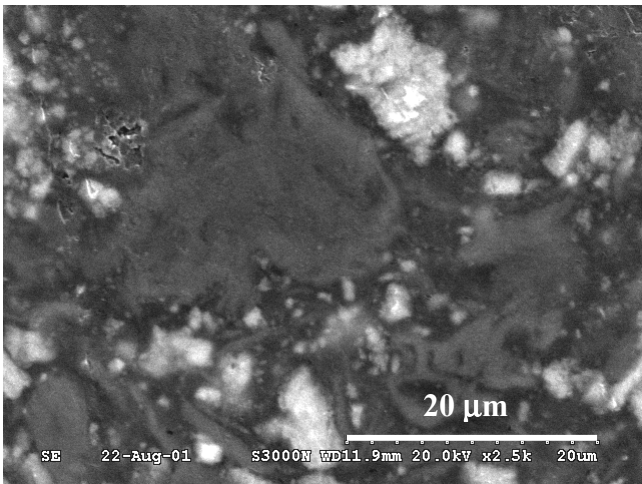
(A1)-I.C. Compòsit d'Araldite-M/HY5162 amb 50% en pes de grafit.



(A1)-I.D. Compòsit d'Araldite-M/HY5162 amb 60% en pes de grafit.



(A1)I.E. Compòsit d'Araldite-M/HY5162 amb 70% en pes de grafit.



(A1)-2.A. Compòsit d'Araldite-CW2215/HY5162 amb 30% en pes de grafit.