



UNIVERSITAT DE
BARCELONA

Caracterización del vulcanismo carbonatítico de Catanda (Angola)

Marc Campeny Crego

ADVERTIMENT. La consulta d'aquesta tesi queda condicionada a l'acceptació de les següents condicions d'ús: La difusió d'aquesta tesi per mitjà del servei TDX (www.tdx.cat) i a través del Dipòsit Digital de la UB (diposit.ub.edu) ha estat autoritzada pels titulars dels drets de propietat intel·lectual únicament per a usos privats emmarcats en activitats d'investigació i docència. No s'autoritza la seva reproducció amb finalitats de lucre ni la seva difusió i posada a disposició des d'un lloc aliè al servei TDX ni al Dipòsit Digital de la UB. No s'autoritza la presentació del seu contingut en una finestra o marc aliè a TDX o al Dipòsit Digital de la UB (framing). Aquesta reserva de drets afecta tant al resum de presentació de la tesi com als seus continguts. En la utilització o cita de parts de la tesi és obligat indicar el nom de la persona autora.

ADVERTENCIA. La consulta de esta tesis queda condicionada a la aceptación de las siguientes condiciones de uso: La difusión de esta tesis por medio del servicio TDR (www.tdx.cat) y a través del Repositorio Digital de la UB (diposit.ub.edu) ha sido autorizada por los titulares de los derechos de propiedad intelectual únicamente para usos privados enmarcados en actividades de investigación y docencia. No se autoriza su reproducción con finalidades de lucro ni su difusión y puesta a disposición desde un sitio ajeno al servicio TDR o al Repositorio Digital de la UB. No se autoriza la presentación de su contenido en una ventana o marco ajeno a TDR o al Repositorio Digital de la UB (framing). Esta reserva de derechos afecta tanto al resumen de presentación de la tesis como a sus contenidos. En la utilización o cita de partes de la tesis es obligado indicar el nombre de la persona autora.

WARNING. On having consulted this thesis you're accepting the following use conditions: Spreading this thesis by the TDX (www.tdx.cat) service and by the UB Digital Repository (diposit.ub.edu) has been authorized by the titular of the intellectual property rights only for private uses placed in investigation and teaching activities. Reproduction with lucrative aims is not authorized nor its spreading and availability from a site foreign to the TDX service or to the UB Digital Repository. Introducing its content in a window or frame foreign to the TDX service or to the UB Digital Repository is not authorized (framing). Those rights affect to the presentation summary of the thesis as well as to its contents. In the using or citation of parts of the thesis it's obliged to indicate the name of the author.

Publicaciones originales

9.6. Publicación VI

Campany M., Kamenetsky, V.S., Melgarejo, J.C., Mangas J., Bambi A., Manuel, J.

(2013): Sodium rich magmas parental to Catanda carbonatitic lavas (Angola): Melt inclusion evidence. *Mineralogical Magazine* 77(5), 814.

Exploring the preservation of alkaline-carbonatitic extrusive rocks in relation to continent formation

L.S.CAMPBELL^{1*} A. DYER² C. WILLIAMS³
AND P.R. LYTHGOE¹

¹School of Earth, Atmospheric and Environmental Sciences, University of Manchester, Williamson Building, Oxford Road, Manchester M13 9PL. UK

(*correspondence: L.S.Campbell@manchester.ac.uk)

²Department of Chemistry, Loughborough University, Ashby Road, Loughborough, Leicestershire LE11 3TU. UK

³School of Applied Science, University of Wolverhampton, Wulfruna Street, Wolverhampton, WV1 1SB. UK

Mineral reaction paths related to continental alkaline-carbonatitic extrusive rocks are examined in the context of a “zeolitic masquerade” hypothesis [1]. The hypothesis suggests that zeolitic alteration reactions are the first steps in a gradual stabilization of these bedded successions, as the highly reactive volcanic deposits change from glasses via zeolites to authigenic feldspars, clays and SiO₂ phases. Reported reaction progressions are suggestive of trends in which Si/Al increases with time as wider, Si-saturated fluids react with earlier-formed phases in continental environments. It is not known how trace elements such as the REE and HFSE behave at each stage of reactive progression as no systematic study of these elements has been made for wide occurrences of natural zeolites. But our preliminary data indicate that the first-formed, low-Si zeolites (e.g. phillipsite), reflect the REE patterns of the original volcanic glasses. Modifications to trace element signatures of altered successions are very likely to occur as reactions progress with exposure to wider crustal fluids. Some of these modifications will be dependent on the ion-selectivity properties of different zeolite minerals in the reaction paths, but fluid controls are certainly evident. A preliminary exploration of possible examples in the geological record, of recognition and stabilization of reactive successions, is discussed.

[1] Campbell *et al* (2012) *Mineralium Deposita*, **47**, 371–382.

Sodium rich magmas parental to Catanda carbonatitic lavas (Angola): Melt inclusion evidence

M. CAMPENY^{1*} V. KAMENETSKY² J.C. MELGAREJO¹
J. MANGAS³, A. BAMBI⁴ AND J. MANUEL⁴

¹ Faculty of Geology, University of Barcelona, Catalonia

*(correspondence: mcampeny@ub.edu)

² CODES ARC, Univ. of Tasmania, Australia

³ Dept. de Física, Univ. Las Palmas de Gran Canaria, Spain

⁴ Dept. Geologia, Univ. Agostinho Neto, Luanda, Angola

Remains of highly eroded carbonatitic volcanic edifices occupy a region of 50 km² in the vicinity of the Catanda village, Kwanza Sul province, Angola. Carbonatitic lava flows and pyroclastic deposits are present in the area forming sequences of volcanic materials up to 600 metres in thickness.

We have studied the composition of the melt inclusions preserved in the primitive mineral phases of the lavas such as calcite, apatite, Na-rich cuspidine and spinel. Most inclusions are composed by calcium carbonates enriched in Na (up to 18 wt.%), K (up to 7 wt.%) and with significant S contents (Fig.1a). Alkaline chlorides such as sylvite and halite can be also found among daughter phases (Fig.1b), as well as periclase, olivine, monticellite and clinopyroxene. Na-rich apatite, perovskite and pyrochlore are also found in this assemblage, arguing for important role of alkalis and fluorine.

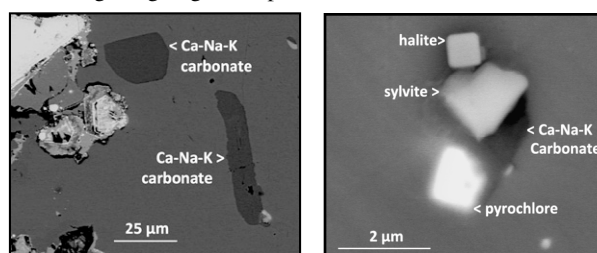


Figure 1: a) Calcium-alkaline carbonate included in calcite. b) Alkaline chlorides, carbonate and pyrochlore inside calcite.

The presence of alkalis in the melt inclusions hosted by main phenocryst mineral suggests that the parental magma compositions were Na- and K-rich. We consider that postmagmatic processes removed much of the alkaline elements from the Catanda lavas.