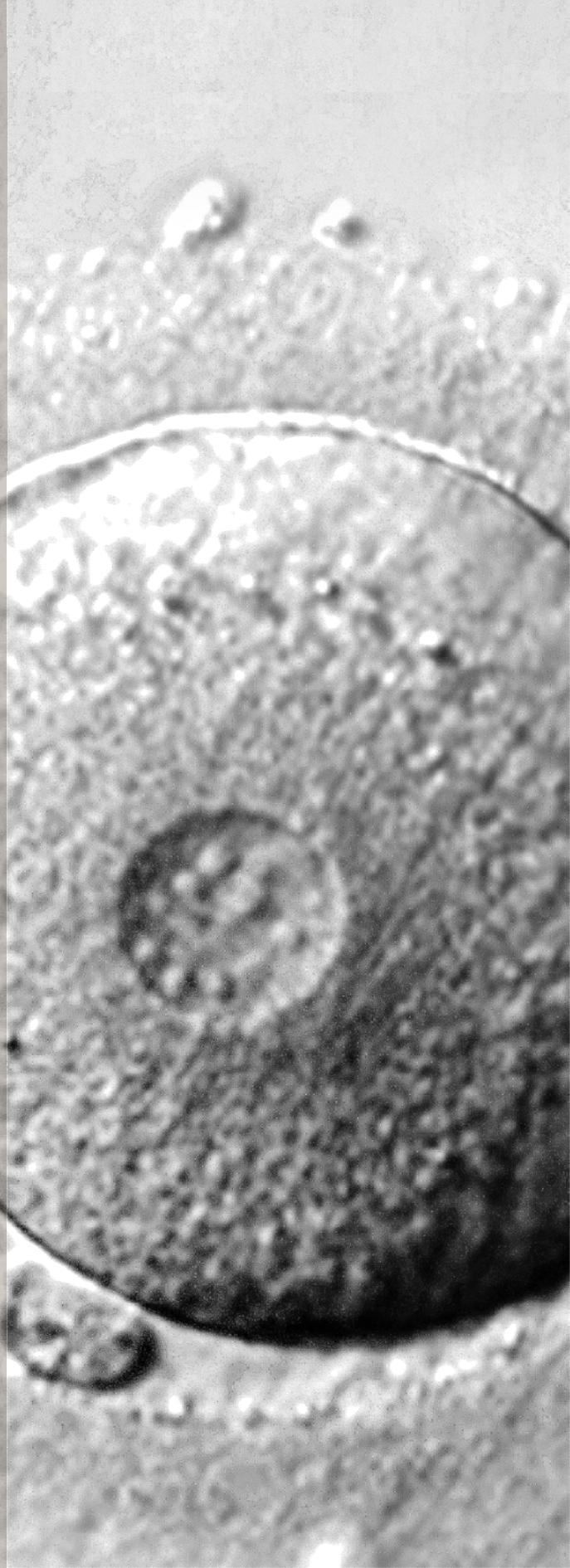


**Zigots
monopronucleats:
origen,
desenvolupament
i constitució
cromosòmica**

Sílvia Mateo Cuadros

Tesi Doctoral

Novembre 2017



CAPÍTOL 6

CONCLUSIONS

1. Els zigots monopronucleats amb dos corpuscles polars provinents d'ICSI són heterogenis pel que fa al seu origen, desenvolupament *in vitro* i constitució cromosòmica.
2. Un alt percentatge de zigots monopronucleats amb dos corpuscles polars provinents d'ICSI són producte de la fecundació amb contribució genètica de l'espermatozoide.
3. Els embrions derivats de zigots monopronucleats amb dos corpuscles polars provinents d'ICSI són majoritàriament portadors d'aneuploidies.
4. Un alt percentatge dels embrions derivats de zigots monopronucleats amb dos corpuscles polars provinents d'ICSI presenten mosaïcisme cel·lular.
5. Els embrions derivats de zigots monopronucleats amb dos corpuscles polars provinents d'ICSI tenen una major taxa de bloqueig del desenvolupament que els embrions provinents de zigots amb dos pronuclis i dos corpuscles polars.
6. La taxa de blastocist obtinguda en els embrions derivats de zigots monopronucleats amb dos corpuscles polars provinents d'ICSI és inferior a l'obtinguda en embrions provinents de zigots amb dos pronuclis i dos corpuscles polars.
7. Els zigots monopronucleats amb dos corpuscles polars provinents d'ICSI que assoleixen l'estadi de blastocist mostren una cinètica similar a la dels blastocists provinents de zigots amb dos pronuclis i dos corpuscles polars.
8. La taxa d'euploidia observada entre els zigots monopronucleats amb dos corpuscles polars provinents d'ICSI que assoleixen l'estadi de blastocists és major que la dels embrions que aturen el seu desenvolupament en estadis previs.
9. Els blastocists derivats de zigots monopronucleats amb dos corpuscles polars provinents d'ICSI poden implantar i donar lloc al naixement de nens sans.
10. En cas de considerar l'ús reproductiu dels embrions derivats de zigots monopronucleats amb dos corpuscles polars provinents d'ICSI s'aconsella realitzar un estudi genètic dels embrions en estadi de blastocist per analitzar la dotació cromosòmica i l'origen biparental del material genètic de l'embrió.

CAPÍTOL 7

BIBLIOGRAFIA

A

- Aguilar J, Motato Y, Escribá MJ, Ojeda M, Muñoz E, Meseguer M. The human first cell cycle: Impact on implantation. *Reprod Biomed Online* 2014;**28**:475–484.
- Alikani M, Calderon G, Tomkin G, Garrisi J, Kokot M, Cohen J. Cleavage anomalies in early human embryos and survival after prolonged culture in-vitro. *Hum Reprod* 2000;**15**:2634–2643.
- ALPHA Scientists In Reproductive Medicine ., ESHRE Special Interest Group Embryology . Istanbul consensus workshop on embryo assessment: Proceedings of an expert meeting. *Reprod Biomed Online* 2011;**22**:632–646.
- Asch R, Simerly C, Ord T, Ord VA, Schatten G. The stages at which human fertilization arrests: Microtubule and chromosome configurations in inseminated oocytes which failed to complete fertilization and development in humans. *Mol Hum Reprod* 1995;**1**:239–248.
- ASEBIR. *Cuadernos de embriología clínica II. Criterios ASEBIR de valoración morfológica de oocitos, embriones tempranos y blastocistos humanos*. In Recco, editor. 2007; Madrid.
- ASEBIR. *Cuadernos de embriología clínica. Criterios ASEBIR de Valoración Morfológica de Oocitos, Embriones Tempranos y Blastocistos Humanos. 3ª Edición*. 2015;
- Athayde Wirka K, Chen AA, Conaghan J, Ivani K, Gvakharia M, Behr B, Suraj V, Tan L, Shen S. Atypical embryo phenotypes identified by time-lapse microscopy: High prevalence and association with embryo development. *Fertil Steril* 2014;**101**:1637–1648.e5. Elsevier Inc.
- Azevedo a. R, Pinho MJ, Silva J, Sa R, Thorsteinsdottir S, Barros a., Sousa M. Molecular Cytogenetics of Human Single Pronucleated Zygotes. *Reprod Sci* 2014;**21**:1472–1482.
- Azzarello A, Hoest T, Mikkelsen AL. The impact of pronuclei morphology and dynamicity on live birth outcome after time-lapse culture. *Hum Reprod* 2012;**27**:2649–2657.

B

- Balakier H, Cadesky K. The frequency and developmental capability of human embryos containing multinucleated blastomeres. *Hum Reprod* 1997;**12**:800–804.
- Balakier H, MacLusky NJ, Casper RF. Characterization of the first cell cycle in human zygotes: implications for cryopreservation. *Fertil Steril* 1993a;**59**:359–365.

7. BIBLIOGRAFIA

- Balakier H, Squire J, Casper RF. Characterization of abnormal one pronuclear human oocytes by morphology, cytogenetics and in-situ hybridization. *Hum Reprod* 1993b;**8**:402–408.
- Bar-El L, Kalma Y, Malcov M, Schwartz T, Raviv S, Cohen T, Amir H, Cohen Y, Reches A, Amit A, *et al.* Blastomere biopsy for PGD delays embryo compaction and blastulation: a time-lapse microscopic analysis. *J Assist Reprod Genet* 2016;**33**:1449–1457. *Journal of Assisted Reproduction and Genetics*.
- Barak Y, Kogosowski A, Goldman S, Soffer Y, Gonen Y, Tesarik J. Pregnancy and birth after transfer of embryos that developed from single-nucleated zygotes obtained by injection of round spermatids into oocytes. *Fertil Steril* 1998;**70**:67–70.
- Basile N, Caiazza M, Meseguer M. What does morphokinetics add to embryo selection and in-vitro fertilization outcomes? *Curr Opin Obstet Gynecol* 2015;**27**:193–200.
- Basile N, Nogales MDC, Bronet F, Florensa M, Riqueiros M, Rodrigo L, García-Velasco J, Meseguer M. Increasing the probability of selecting chromosomally normal embryos by time-lapse morphokinetics analysis. *Fertil Steril* 2014;**101**:699–704.e1. Elsevier Inc.
- Best L, Campbell A, Duffy S, Montgomery S, Fishel S. Does one model fit all? Testing a published embryo selection algorithm on independent time-lapse data. *Hum Reprod* 2013;**28**:i87–i90.
- Bielanska M, Tan SL, Ao A. Chromosomal mosaicism throughout human preimplantation development in vitro: incidence, type, and relevance to embryo outcome. *Hum Reprod* 2002;**17**:413–419.
- Boada M, Carrera M, La Iglesia C De, Sandalinas M, Barri PN, Veiga A. Successful Use of a Laser for Human Embryo Biopsy in Preimplantation Genetic Diagnosis: Report of Two Cases. *J Assist Reprod Genet* 1998;**15**:302–307. Kluwer Academic Publishers-Plenum Publishers: New York.
- Boada M, Gil Y, Mateo S, Jorda L, Barri PN, Veiga A. Morphokinetic differences on embryo development after normal or abnormal fertilization. *ASRM* 2012;, p. P-163.
- Boada M, Ponsà M. Características morfológicas y ultraestructurales de cigotos y embriones anormales tras FIV/ICSI. *Morphol ultraestructural Charact Abnorm zygotes cleavage embryos after IVF/ICSI* 2008;**13**:26–37.
- Boer KA de, Catt JW, Jansen RPS, Leigh D, McArthur S. Moving to blastocyst biopsy for preimplantation genetic diagnosis and single embryo transfer at sydney IVF. *Fertil Steril* 2004;**82**:295–298.
- Botros L, Sakkas D, Seli E. Metabolomics and its application for non-invasive embryo assessment in IVF. *Mol Hum Reprod* 2008;**14**:679–690.
- Bradley CK, Traversa M, Hobson N, Gee AJ, McArthur SJ. Clinical use of monopronucleated zygotes following blastocyst culture and preimplantation genetic screening, including verification of biparental chromosome inheritance.

Reprod Biomed Online 2017;**34**:567–574. Elsevier.

C

- Campbell A, Fishel S, Bowman N, Duffy S, Sedler M, Hickman CFL. Modelling a risk classification of aneuploidy in human embryos using non-invasive morphokinetics. *Reprod Biomed Online* 2013a;**26**:477–485. Reproductive Healthcare Ltd.
- Campbell A, Fishel S, Bowman N, Duffy S, Sedler M, Thornton S. Retrospective analysis of outcomes after IVF using an aneuploidy risk model derived from time-lapse imaging without PGS. *Reprod Biomed Online* 2013b;**27**:140–146. Reproductive Healthcare Ltd.
- Campos G, Parriego M, Vidal F, Coroleu B, Veiga A. Análisis cromosómico y potencial de desarrollo de cigotos monopronucleares y apronucleares Cytogenetic constitution and developmental potential of embryos derived from apronuclear and monopronuclear zygotes. 2007;**24**:29–34.
- Capalbo A, Rienzi L, Cimadomo D, Maggiulli R, Elliott T, Wright G, Nagy ZP, Ubaldi FM. Correlation between standard blastocyst morphology, euploidy and implantation: An observational study in two centers involving 956 screened blastocysts. *Hum Reprod* 2014;**29**:1173–1181.
- Capmany G, Taylor a, Braude PR, Bolton VN. The timing of pronuclear formation, DNA synthesis and cleavage in the human 1-cell embryo. *Mol Hum Reprod* 1996;**2**:299–306.
- Carceller Beltrán R, Sáenz Moreno I, Gracia Cervero E, Bassecourt Serra M, Ureña Hornos T, García-Dihinx Villanova J, López Pisón J, Marco Tello A, Rebage Moisés V. Triploidía completa 69XXY. *An Pediatría* 2004;**61**:562–564. Elsevier.
- Carrasco B, Arroyo G, Gil Y, Gómez MJ, Rodríguez I, Barri PN, Veiga A. Selecting embryos with the highest implantation potential using data mining and decision tree based on classical embryo morphology and morphokinetics. *J Assist Reprod Genet* 2017;**34**:983–990. Journal of Assisted Reproduction and Genetics.
- Cimadomo D, Capalbo A, Ubaldi FM, Scarica C, Palagiano A, Canipari R, Rienzi L. The Impact of Biopsy on Human Embryo Developmental Potential during Preimplantation Genetic Diagnosis. *Biomed Res Int* 2016;**2016**:. Hindawi Publishing Corporation.
- Ciray HN, Campbell A, Agerholm IE, Aguilar J, Chamayou S, Esbert M, Sayed S. Proposed guidelines on the nomenclature and annotation of dynamic human embryo monitoring by a time-lapse user group. *Hum Reprod* 2014;**29**:2650–2660.
- Collas P, Poccia D. Remodeling the sperm nucleus into a male pronucleus at fertilization. *Theriogenology* 1998;**49**:, p. 67–81.
- Cruz M, Garrido N, Herrero J, Pérez-Cano I, Muñoz M, Meseguer M. Timing of cell division in human cleavage-stage embryos is linked with blastocyst formation and

7. BIBLIOGRAFIA

quality. *Reprod Biomed Online* 2012;**25**:371–381.

D

- Dahdouh EM, Balayla J, Garc??a-Velasco JA. Comprehensive chromosome screening improves embryo selection: A meta-analysis. *Fertil Steril* 2015;**104**:1503–1512.
- Daphnis DD, Delhanty JD a, Jerkovic S, Geyer J, Craft I, Harper JC. Detailed FISH analysis of day 5 human embryos reveals the mechanisms leading to mosaic aneuploidy. *Hum Reprod* 2005;**20**:129–137.
- Dasig D, Lyon J, Behr B, Milki A a. Monozygotic twin birth after the transfer of a cleavage stage embryo resulting from a single pronucleated oocyte. *J Assist Reprod Genet* 2004;**21**:427–429.
- Davies S, Christopikou D, Tsorva E, Karagianni A, Handyside A, Mastrominas M. Delayed cleavage divisions and a prolonged transition between 2-and 4-cell stages in embryos identified as aneuploid at the 8-cell stage by array CGH. *Hum Reprod* 2012;ii84-ii86.
- Delhanty JD a, Harper JC, Ao A, Handyside AH, Winston RML. Multicolour FISH detects frequent chromosomal mosaicism and chaotic division in normal preimplantation embryos from fertile patients. *Hum Genet* 1997;**99**:755–760.
- Diez-Juan A, Rubio C, Marin C, Martinez S, Al-Asmar N, Riboldi M, Díaz-Gimeno P, Valbuena D, Simón C. Mitochondrial DNA content as a viability score in human euploid embryos: less is better. *Fertil Steril* 2017;**104**:534–541.e1. Elsevier.
- Dozortsev D, Sutter P De, Dhont M. Behaviour of spermatozoa in human oocytes displaying no or one pronucleus after intracytoplasmic sperm injection. 1994;**9**:2139–2144.
- Ducibella T. The cortical reaction and development of activation competence in mammalian oocytes. *Hum Reprod Update* 1996;**2**:29–42.

E

- Echten-Arends J van, Mastenbroek S, Sikkema-Raddatz B, Korevaar JC, Heineman MJ, Veen F van der, Repping S. Chromosomal mosaicism in human preimplantation embryos: A systematic review. *Hum Reprod Update* 2011;**17**:620–627.
- Elder K, Dale B. *In-vitro fertilization*. 2011; Cambridge University Press.
- Escribá M-J, Escrich L, Galiana Y, Grau N, Galán A, Pellicer A. Kinetics of the early development of uniparental human haploid embryos. *Fertil Steril* 2016;**105**:1360–1368.e1. Elsevier.

F

- Feenan K, Herbert M. Can 'abnormally' fertilized zygotes give rise to viable embryos? *Hum Fertil (Camb)* 2006;**9**:157–169.
- Fernández SF, Toro E, Colomar A, López-Teijón M, Velilla E. A 24-chromosome FISH technique in preimplantation genetic diagnosis: validation of the method. *Syst Biol Reprod Med* 2015;**61**:171–177. Taylor & Francis.
- Fiorentino F, Biricik A, Bono S, Spizzichino L, Cotroneo E, Cottone G, Kokocinski F, Michel C-E. Development and validation of a next-generation sequencing-based protocol for 24-chromosome aneuploidy screening of embryos. *Fertil Steril* 2014a;**101**:1375–1382.e2. Elsevier.
- Fiorentino F, Bono S, Biricik A, Nuccitelli A, Cotroneo E, Cottone G, Kokocinski F, Michel C-E, Minasi MG, Greco E. Application of next-generation sequencing technology for comprehensive aneuploidy screening of blastocysts in clinical preimplantation genetic screening cycles. *Hum Reprod* 2014b;**29**:2802–2813.
- Flaherty SP, Payne D, Matthews CD. Fertilization failures and abnormal fertilization after intracytoplasmic sperm injection. *Hum Reprod* 1998;**13 Suppl 1**:155–164.
- Flaherty SP, Payne D, Swann NJ, Matthews CD. Aetiology of failed and abnormal fertilization after intracytoplasmic sperm injection. *Hum Reprod* 1995;**10**:2623–2629.
- Forman EJ, Hong KH, Franasiak JM, Scott RT. Obstetrical and neonatal outcomes from the BEST Trial: Single embryo transfer with aneuploidy screening improves outcomes after in vitro fertilization without compromising delivery rates. *Am J Obstet Gynecol* 2014;**210**.
- Forman EJ, Hong KH, Treff NR, Scott RT. Comprehensive Chromosome Screening and Embryo Selection: Moving Toward Single Euploid Blastocyst Transfer. *Semin Reprod Med* 2012;**30**:236–242.
- Fragouli E, Alfarawati S, Daphnis DD, Goodall NN, Mania A, Griffiths T, Gordon A, Wells D. Cytogenetic analysis of human blastocysts with the use of FISH, CGH and aCGH: Scientific data and technical evaluation. *Hum Reprod* 2011;**26**:480–490.
- Fragouli E, Alfarawati S, Spath K, Tarozzi N, Borini a., Wells D. The developmental potential of mosaic embryos. *Fertil Steril* 2015;**104**:e96. Elsevier Ltd.
- Fragouli E, Wells D. Aneuploidy in the human blastocyst. *Cytogenet Genome Res* 2011;**133**:149–159.
- Franasiak JM, Forman EJ, Hong KH, Werner MD, Upham KM, Treff NR, Scott RT. The nature of aneuploidy with increasing age of the female partner: A review of 15,169 consecutive trophectoderm biopsies evaluated with comprehensive chromosomal screening. *Fertil Steril* 2014;**101**:656–663.e1. Elsevier Inc.

7. BIBLIOGRAFIA

G

- Gardner DK, Balaban B. Assessment of human embryo development using morphological criteria in an era of time-lapse, algorithms and 'OMICS': is looking good still important? *MHR Basic Sci Reprod Med* 2016;**22**:704–718.
- Gardner DK, Meseguer M, Rubio C, Treff NR. Diagnosis of human preimplantation embryo viability. *Hum Reprod Update* 2015;**21**:727–747.
- Gardner R, Sutherland G, Shaffer L. *Chromosome abnormalities and genetic counseling*. 2012; Oxford university Press: Oxford.
- Gerris J, Neubourg D De, Mangelschots K, Royen E Van, Meerssche M Van De, Valkenburg M. Prevention of twin pregnancy after in-vitro fertilization or intracytoplasmic sperm injection based on strict embryo criteria: A prospective randomized clinical trial. *Hum Reprod* 1999;**14**:2581–2587.
- Gleicher N, Vidali A, Braverman J, Kushnir VA, Barad DH, Hudson C, Wu Y-G, Wang Q, Zhang L, Albertini DF. Accuracy of preimplantation genetic screening (PGS) is compromised by degree of mosaicism of human embryos. *Reprod Biol Endocrinol* 2016;**14**:54.
- Gras L, Trounson AO. Pregnancy and birth resulting from transfer of a blastocyst observed to have one pronucleus at the time of examination for fertilization. *Hum Reprod* 1999;**14**:1869–1871.
- Grau N, Escrich L, Galiana Y, Meseguer M, García-Herrero S, Remohí J, Escribá M-J. Morphokinetics as a predictor of self-correction to diploidy in tripronucleated intracytoplasmic sperm injection-derived human embryos. *Fertil Steril* 2015;**104**:728–735. Elsevier.
- Greco E, Minasi MG, Fiorentino F. Healthy Babies after Intrauterine Transfer of Mosaic Aneuploid Blastocysts. *N Engl J Med* 2015;**373**:2089–2090.
- Grossmann M, Calafell JM, Brandy N, Vanrell JA, Rubio C, Pellicer A, Egozcue J, Vidal F, Santaló J. Origin of tripronucleate zygotes after intracytoplasmic sperm injection. *Hum Reprod* 1997;**12**:2762–2765.
- Gutiérrez-Mateo C, Colls P, Sánchez-García J, Escudero T, Prates R, Ketterson K, Wells D, Munné S. Validation of microarray comparative genomic hybridization for comprehensive chromosome analysis of embryos. *Fertil Steril* 2011;**95**:953–958.

H

- Handyside a H, Kontogianni EH, Hardy K, Winston RM. Pregnancies from biopsied human preimplantation embryos sexed by Y-specific DNA amplification. *Nature* 1990;**344**:768–770.
- Handyside AH. 24-chromosome copy number analysis: a comparison of available technologies. *Fertil Steril* 2013;**100**:595–602. Elsevier Inc.

Hardarson T, Hanson C, Lundin K, Hillensjö T, Nilsson L, Stevic J, Reismer E, Borg K, Wikland M, Bergh C. Preimplantation genetic screening in women of advanced maternal age caused a decrease in clinical pregnancy rate: a randomized controlled trial. *Hum Reprod* 2008;**23**:2806–2812.

Hardarson T, Lundin K, Hamberger L. The position of the metaphase II spindle cannot be predicted by the location of the first polar body in the human oocyte. *Hum Reprod* 2000;**15**:1372–1376.

Harton GL, Munné S, Surrey M, Grifo J, Kaplan B, McCulloh DH, Griffin DK, Wells D. Diminished effect of maternal age on implantation after preimplantation genetic diagnosis with array comparative genomic hybridization. *Fertil Steril* 2013;**100**:1695–1703.

Heijden GW Van Der, Berg IM Van Den, Baart EB, Derijck AAHA, Martini E, Boer P De. Parental origin of chromatin in human monopronuclear zygotes revealed by asymmetric histone methylation patterns, differs between IVF and ICSI. *Mol Reprod Dev* 2009;**76**:101–108.

Heijden GW Van Der, Dieker JW, Derijck AAHA, Muller S, Berden JHM, Braat DDM, Vlag J Van Der, Boer P De. Asymmetry in Histone H3 variants and lysine methylation between paternal and maternal chromatin of the early mouse zygote. *Mech Dev* 2005;**122**:1008–1022.

Igashira C, Otsuki J, Furuhashi K, Katada Y, Sumimoto T, Kishi K, Matsuura M, Mukai M, Sumi C, Tsuji Y, *et al.* The difference in size between single pronuclei after ICSI and after IVF. *ASMR* 2016;, p. O-42.

Inbar-Feigenberg M, Choufani S, Cytrynbaum C, Chen YA, Steele L, Shuman C, Ray PN, Weksberg R. Mosaicism for genome-wide paternal uniparental disomy with features of multiple imprinting disorders: Diagnostic and management issues. *Am J Med Genet Part A* 2013;**161**:13–20.

Itoi F, Asano Y, Shimizu M, Honnma H, Murata Y. Birth of nine normal healthy babies following transfer of blastocysts derived from human single-pronucleate zygotes. *J Assist Reprod Genet* 2015;**32**:1401–1407.

Iwata K, Mio Y. Observation of human embryonic behavior in vitro by high-resolution time-lapse cinematography. *Reprod Med Biol* 2016;**15**:145–154.

Joergensen MW, Agerholm I, Hindkjaer J, Bolund L, Sunde L, Ingerslev HJ, Kirkegaard K. Altered cleavage patterns in human tripronuclear embryos and their association to fertilization method: A time-lapse study. *J Assist Reprod Genet* 2014;**31**:435–442. Springer US: Boston.

7. BIBLIOGRAFIA

Jukam D, Shariati SAM, Skotheim JM. Zygotic Genome Activation in Vertebrates. *Dev Cell* 2017;**42**:316–332. Elsevier.

K

Kai Y, Iwata K, Iba Y, Mio Y. Diagnosis of abnormal human fertilization status based on pronuclear origin and/or centrosome number. *J Assist Reprod Genet* 2015;**32**:1589–1595.

Kaser DJ, Racowsky C. Clinical outcomes following selection of human preimplantation embryos with time-lapse monitoring: A systematic review. *Hum Reprod Update* 2014;**20**:617–631.

Katz-Jaffe MG, Gardner DK, Schoolcraft WB. Proteomic analysis of individual human embryos to identify novel biomarkers of development and viability. *Fertil Steril* 2006;**85**:101–107.

Kirkegaard K, Ahlström A, Ingerslev HJ, Hardarson T. Choosing the best embryo by time lapse versus standard morphology. *Fertil Steril* 2015a;**103**:323–332.

Kirkegaard K, Campbell A, Agerholm I, Bentin-Ley U, Gabrielsen A, Kirk J, Sayed S, Ingerslev HJ. Limitations of a time-lapse blastocyst prediction model: a large multicentre outcome analysis. *Reprod Biomed Online* 2014;**29**:156–158. Elsevier.

Kirkegaard K, Juhl Hindkjaer J, Ingerslev HJ. Human embryonic development after blastomere removal: A time-lapse analysis. *Hum Reprod* 2012;**27**:97–105.

Kirkegaard K, Sundvall L, Erlandsen M, Hindkjær JJ, Knudsen UB, Ingerslev HJ. Timing of human preimplantation embryonic development is confounded by embryo origin. *Hum Reprod* 2015b;**31**:324–331.

Kirkegaard K, Sundvall L, Erlandsen M, Hindkjær JJ, Knudsen UB, Ingerslev HJ. Timing of human preimplantation embryonic development is confounded by embryo origin. *Hum Reprod* 2016;**31**:324–331.

Kligman I, Benadiva C, Alikani M, Munne S. The presence of multinucleated blastomeres in human embryos is correlated with chromosomal abnormalities. *Hum Reprod* 1996;**11**:1492–1498.

Kramer YG, Kofinas JD, Melzer K, Noyes N, McCaffrey C, Buldo-Licciardi J, McCulloh DH, Grifo JA. Assessing morphokinetic parameters via time lapse microscopy (TLM) to predict euploidy: are aneuploidy risk classification models universal? *J Assist Reprod Genet* 2014;**31**:1231–1242.

Kuwayama M. Highly efficient vitrification for cryopreservation of human oocytes and embryos: The Cryotop method. *Theriogenology* 2007;**67**:73–80.

Kuwayama M, Vajta G, Kato O, Leibo SP. Highly efficient vitrification method for cryopreservation of human oocytes. *Reprod Biomed Online* 2005;**11**:300–308.

L

- Lagalla C, Tarozzi N, Sciajno R, Wells D, Santo M Di, Nadalini M, Distratis V, Borini A. Embryos with morphokinetic abnormalities may develop into euploid blastocysts. *Reprod Biomed Online* 2017;**34**:137–146. Elsevier.
- Lai H-H, Chuang T-H, Wong L-K, Lee M-J, Hsieh C-L, Wang H-L, Chen S-U. Identification of mosaic and segmental aneuploidies by next-generation sequencing in preimplantation genetic screening can improve clinical outcomes compared to array-comparative genomic hybridization. *Mol Cytogenet* 2017;**10**:14. BioMed Central: London.
- Lemmen JG, Agerholm I, Ziebe S. Kinetic markers of human embryo quality using time-lapse recordings of IVF/ICSI-fertilized oocytes. *Reprod Biomed Online* 2008;**17**:385–391. Reproductive Healthcare Ltd, Duck End Farm, Dry Drayton, Cambridge CB23 8DB, UK.
- Levron J, Munné S, Willadsen S, Rosenwaks Z, Cohen J. Male and female genomes associated in a single pronucleus in human zygotes. *Biol Reprod* 1995;**52**:653–657.
- Li M, Lin S, Chen Y, Zhu J, Liu P, Qiao J. Value of transferring embryos that show no evidence of fertilization at the time of fertilization assessment. *Fertil Steril* 2015;**104**:607–611.e2. Elsevier Inc.
- Liao H, Zhang S, Cheng D, Ouyang Q, Lin G, Gu Y, Lu C, Gong F, Lu G. Cytogenetic analysis of human embryos and embryonic stem cells derived from monopronuclear zygotes. *J Assist Reprod Genet* 2009;**26**:583–589.
- Lim a. ST, Goh VHH, Su CL, Yu SL. Microscopic assessment of pronuclear embryos is not definitive. *Hum Genet* 2000;**107**:62–68.
- Liu Y, Chapple V, Feenan K, Roberts P, Matson P. Time-lapse videography of human embryos: Using pronuclear fading rather than insemination in IVF and ICSI cycles removes inconsistencies in time to reach early cleavage milestones. *Reprod Biol* 2015;**15**:122–125.
- Liu Y, Chapple V, Roberts P, Ali J, Matson P. Time-lapse videography of human oocytes following intracytoplasmic sperm injection: Events up to the first cleavage division. *Reprod Biol* 2014a;**14**:249–256.
- Liu Y, Chapple V, Roberts P, Matson P. Prevalence, consequence, and significance of reverse cleavage by human embryos viewed with the use of the Embryoscope time-lapse video system. *Fertil Steril* 2014b;**102**:1295–1300.e2. Elsevier.
- Longo FJ. REVIEW FertilizaHon: A Comparative. *Biol Reprod* 1973;149–215.
- Lurain JR, Brewer JI, Torok EE, Halpern B. Natural history of hydatidiform mole after primary evacuation. *Am J Obstet Gynecol* 1983;**145**:591–595. Elsevier.

7. BIBLIOGRAFIA

M

- Macas E, Imthurn B, Roselli M, Keller PJ. Chromosome analysis of single- and multipronucleated human zygotes proceeded after the intracytoplasmic sperm injection procedure. *J Assist Reprod Genet* 1996a;**13**:345–350.
- Macas E, Imthurn B, Rosselli M, Keller PJ. The chromosomal complements of multipronuclear human zygotes resulting from intracytoplasmic sperm injection. *Hum Reprod* 1996b;**11**:2496–2501.
- Magli MC, Gianaroli L, Ferraretti AP. Chromosomal abnormalities in embryos. *Mol Cell Endocrinol* 2001;**183**:
- Magli MC, Gianaroli L, Ferraretti AP, Lappi M, Ruberti A, Farfalli V. Embryo morphology and development are dependent on the chromosomal complement. *Fertil Steril* 2007;**87**:534–541.
- Magli MC, Jones GM, Gras L, Gianaroli L, Korman I, Trounson AO. Chromosome mosaicism in day 3 aneuploid embryos that develop to morphologically normal blastocysts in vitro. *Hum Reprod* 2000;**15**:1781–1786.
- Marcos J, Perez-Albala S, Mifsud A, Molla M, Landeras J, Meseguer M. Collapse of blastocysts is strongly related to lower implantation success : a time-lapse study. *Hum Reprod* 2015;**30**:2501–2508.
- Martinez F, Rodriguez I, Devesa M, Buxaderas R, Gómez MJ, Coroleu B. Should progesterone on the human chorionic gonadotropin day still be measured? *Fertil Steril* 2016;**105**:86–92. Elsevier.
- Mastenbroek S, Twisk M, Echten-Arends J van, Sikkema-Raddatz B, Korevaar JC, Verhoeve HR, Vogel NEA, Arts EGJM, Vries JWA de, Bossuyt PM, *et al*. In Vitro Fertilization with Preimplantation Genetic Screening. *N Engl J Med* 2007;**357**:9–17. Massachusetts Medical Society.
- Mastenbroek S, Twisk M, Veen F van der, Repping S. Preimplantation genetic screening: A systematic review and meta-analysis of RCTs. *Hum Reprod Update* 2011;**17**:454–466.
- Mateo S, Parriego M, Boada M, Vidal F, Coroleu B, Veiga A. In vitro development and chromosome constitution of embryos derived from monopronucleated zygotes after intracytoplasmic sperm injection. *Fertil Steril* 2013;**99**:897–902.
- Mateo S, Vidal F, Parriego M, Rodríguez I, Montalvo V, Veiga A, Boada M. Could monopronucleated ICSI zygotes be considered for transfer? Analysis through time-lapse monitoring and PGS. *J Assist Reprod Genet* 2017;905–911.
- Mateo S, Vidal F, Coll L, Veiga A, Boada M. Chromosomal analysis of blastocyst derived from monopronucleated ICSI zygotes: approach by double trophectoderm biopsy. *JBRA Assist Reprod* 2017;**21**:203–207.
- McLay DW, Clarke HJ. Remodelling the paternal chromatin at fertilization in mammals.

- Reproduction* 2003;**125**:625–633.
- Mertzanidou a., Wilton L, Cheng J, Spits C, Vanneste E, Moreau Y, Vermeesch JR, Sermon K. Microarray analysis reveals abnormal chromosomal complements in over 70% of 14 normally developing human embryos. *Hum Reprod* 2013;**28**:256–264.
- Meseguer M, Herrero J, Tejera A, Hilligsøe KM, Ramsing NB, Remoh J. The use of morphokinetics as a predictor of embryo implantation. *Hum Reprod* 2011;**26**:2658–2671.
- Meseguer M, Rubio I, Cruz M, Basile N, Marcos J, Requena A. Embryo incubation and selection in a time-lapse monitoring system improves pregnancy outcome compared with a standard incubator: a retrospective cohort study. *Fertil Steril* 2012;**98**:1481–1489.e10. Elsevier.
- Milewski R, Ku P, Kuczyska A, Stankiewicz B, Ukaszuk K, Kuczyski W. A predictive model for blastocyst formation based on morphokinetic parameters in time-lapse monitoring of embryo development. *J Assist Reprod Genet* 2015;**32**:571–579.
- Mio Y, Iwata K, Yumoto K, Maeda K. Human Embryonic Behavior Observed with Time-Lapse Cinematography. *J Heal Med Informat* 2014;**5**:143.
- Montag M. Morphokinetics and embryo aneuploidy: Has time come or not yet? *Reprod Biomed Online* 2013;**26**:528–530. Reproductive Healthcare Ltd.
- Montag M, Kajhøj TQ, Agerholm IE. Description of time-lapse systems: EmbryoScope. In Meseguer M, editor. *Time-lapse Microsc in-vitro Fertil* 2016;; p. 11–30. Cambridge University Press: Cambridge.
- Montag M, Liebenthron J, Köster M. Which morphological scoring system is relevant in human embryo development? *Placenta* 2011;**32**:S252–S256. Elsevier.
- Moutou C, Goossens V, Coonen E, Rycke M De, Kokkali G, Renwick P, SenGupta SB, Vesela K, Traeger-Synodinos J. ESHRE PGD Consortium data collection XII: cycles from January to December 2009 with pregnancy follow-up to October 2010†. *Hum Reprod* 2014;**29**:880–903.
- Munné S. Chromosome abnormalities and their relationship to morphology and development of human embryos. *Reprod Biomed Online* 2006;**12**:234–253.
- Munné S, Alikani M, Tomkin G, Grifo J, Cohen J. Embryo morphology, developmental rates, and maternal age are correlated with chromosome abnormalities. *Fertil Steril* 1995;**64**:382–391.
- Munné S, Bahçe M, Sandalinas M, Escudero T, Márquez C, Velilla E, Colls P, Oter M, Alikani M, Cohen J. Differences in chromosome susceptibility to aneuploidy and survival to first trimester. *Reprod Biomed Online* 2004;**8**:81–90.
- Munné S, Dailey T, Finkelstein M, Weier HUG. Reduction in signal overlap results in increased FISH efficiency: Implications for preimplantation genetic diagnosis. *J Assist Reprod Genet* 1996;**13**:149–156.

7. BIBLIOGRAFIA

Munné S, Grifo J, Wells D. Mosaicism: 'survival of the fittest' versus 'no embryo left behind'. *Fertil Steril* 2016;**105**:1146–1149.

Munne S, Sultan KM, Weier HU, Grifo JA, Cohen J, Rosenwaks Z. Assessment of numeric abnormalities of X, Y, 18, and 16 chromosomes in preimplantation human embryos before transfer. *Am J Obstet Gynecol* 1995;**172**:, p. 1191–1201.

Munné S, Weier HU, Grifo J, Cohen J. Chromosome mosaicism in human embryos. *Biol Reprod* 1994;**51**:373–379.

Munné S, Wells D, Cohen J. Technology requirements for preimplantation genetic diagnosis to improve assisted reproduction outcomes. *Fertil Steril* 2010;**94**:408–430. Elsevier.

N

Nagy ZP, Liu J, Joris H, Devroey P, Steirteghem a Van. Time-course of oocyte activation, pronucleus formation and cleavage in human oocytes fertilized by intracytoplasmic sperm injection. *Hum Reprod* 1994;**9**:1743–1748.

O

Otsu E, Sato A, Nagaki M, Araki Y, Utsunomiya T. Developmental potential and chromosomal constitution of embryos derived from larger single pronuclei of human zygotes used in in vitro fertilization. *Fertil Steril* 2004;**81**:723–724.

P

Papale L, Fiorentino A, Montag M, Tomasi G. The zygote. *Hum Reprod* 2012;**27**:22–49.

Parriego M, Nadal S, Boada M, Tuñón L, Mateo S, Coroleu B, Veiga A. Evolución y análisis cromosómico de embriones multinucleados. *VII ASEBIR* 2013;, p. Noviembre 20-22. Sevilla, España.

Parriego M, Solé M, Aurell R, Barri PN, Veiga a. Birth after transfer of frozen-thawed vitrified biopsied blastocysts. *J Assist Reprod Genet* 2007;**24**:147–149.

Payne D, Flaherty SP, Barry MF, Matthews CD. Preliminary observations on polar body extrusion and pronuclear formation in human oocytes using time-lapse video cinematography. *Hum Reprod* 1997;**12**:532–541.

Perreault SD. Chromatin remodeling in mammalian zygotes. *Mutat Res Genet Toxicol* 1992;**296**:43–55.

Petignat P, Senn a, Hohlfeld P, Blant S a, Laurini R, Germond M. Molar pregnancy with a coexistent fetus after intracytoplasmic sperm injection. A case report. *J Reprod Med* 2001;**46**:270–274.

Plachot M, Fiv L De, Sevres H De, Rue G. Fertilization. *Hum Reprod* 2000;**15**:19–30.

Plachot M, Junca AM, Mandelbaum J, Grouchy J de, Salat-Baroux J, Cohen J. Chromosome investigations in early life. II. Human preimplantation embryos. *Hum Reprod* 1987;**2**:29–35.

Plachot M, Mandelbaum J, Junca A, Grouchy J De. Cytogenetic analysis and developmental capacity of normal and abnormal embryos after FVF. 1989;**4**:99–103.

R

Racowsky C, Kovacs P, Martins WP. A critical appraisal of time-lapse imaging for embryo selection: where are we and where do we need to go? *J Assist Reprod Genet* 2015;**32**:1025–1030.

Racowsky C, Ohno-Machado L, Kim J, Biggers JD. Is there an advantage in scoring early embryos on more than one day? *Hum Reprod* 2009;**24**:2104–2113.

Racowsky C, Stern JE, Gibbons WE, Behr B, Pomeroy KO, Biggers JD. National collection of embryo morphology data into Society for Assisted Reproductive Technology Clinic Outcomes Reporting System: associations among day 3 cell number, fragmentation and blastomere asymmetry, and live birth rate. *Fertil Steril* 2011;**95**:1985–1989. Elsevier.

Rawe VY, Olmedo SB, Nodar FN, Doncel GD, Acosta AA, Vitullo AD. Cytoskeletal organization defects and abortive activation in human oocytes after IVF and ICSI failure. *Mol Hum Reprod* 2000;**6**:510–516.

Rienzi L, Ubaldi F, Martinez F, Iacobelli M, Minasi MG, Ferrero S, Terasik J, Greco E. Relationship between meiotic spindle location with regard to the polar body position and oocyte developmental potential after ICSI. *Hum Reprod* 2003;**18**:1289–1293.

Robinson WP. Mechanisms leading to uniparental disomy and their clinical consequences. *Bioessays* 2000;**22**:452–459.

Romanelli V, Nevado J, Fraga M, Trujillo AM, Mori MÁ, Fernández L, Pérez de Nanclares G, Martínez-Glez V, Pita G, Meneses H, *et al.* Constitutional mosaic genome-wide uniparental disomy due to diploidisation: an unusual cancer-predisposing mechanism. *J Med Genet* 2011;**48**:212–216.

Rosenbusch B. The Chromosomal Constitution of Embryos Arising from Monopronuclear Oocytes in Programmes of Assisted Reproduction. *Int J Reprod Med* 2014;**2014**:1–8. Hindawi Publishing Corporation.

Rosenbusch B, Schneider M, Sterzik K. The chromosomal constitution of multipronuclear zygotes resulting from in-vitro fertilization. *Hum Reprod* 1997;**12**:2257–2262.

Rosenbusch BE. Mechanisms giving rise to triploid zygotes during assisted reproduction. *Fertil Steril* 2008;**90**:49–55.

Royen E Van, Mangelschots K, Neubourg D De, Laureys I, Ryckaert G, Gerris J. Calculating

7. BIBLIOGRAFIA

- the implantation potential of day 3 embryos in women younger than 38 years of age: a new model. *Hum Reprod* 2001;**16**:326–332.
- Royen E Van, Mangelschots K, Neubourg D De, Valkenburg M, Meerssche M Van de, Ryckaert G, Eestermans W, Gerris J. Characterization of a top quality embryo, a step towards single-embryo transfer. *Hum Reprod* 1999;**14**:2345–2349.
- Rubio C, Buendia P, Rodrigo L, Mercader a, Mateu E, Peinado V, Delgado a, Milan M, Mir P, Simon C, *et al.* Prognostic factors for preimplantation genetic screening in repeated pregnancy loss. *Reprod Biomed Online* 2009;**18**:687–693.
- Rubio C, Rodrigo L, Mercader A, Mateu E, Buendía P, Pehlivan T, Vilorio T, Los Santos MJ De, Simón C, Remohí J, *et al.* Impact of chromosomal abnormalities on preimplantation embryo development. *Prenat Diagn* 2007;**27**:748–756.
- Rubio I, Gal??n A, Larreategui Z, Ayerdi F, Bellver J, Herrero J, Meseguer M. Clinical validation of embryo culture and selection by morphokinetic analysis: A randomized, controlled trial of the EmbryoScope. *Fertil Steril* 2014;**102**:1287–1294.
- Rubio I, Kuhlmann R, Agerholm I, Kirk J, Herrero J, Escribá M-J, Bellver J, Meseguer M. Limited implantation success of direct-cleaved human zygotes: a time-lapse study. *Fertil Steril* 2012;**98**:1458–1463. Elsevier.
- Rycke M De, Belva F, Goossens V, Moutou C, Sengupta SB, Coonen E. ESHRE PAGES ESHRE PGD Consortium data collection XIII : cycles from January to December 2010 with pregnancy follow-up to October 2011 †. 2015;**30**:1763–1789.

S

- Sandalinas M, Sadowy S, Alikani M, Calderon G, Cohen J, Munné S. Developmental ability of chromosomally abnormal human embryos to develop to the blastocyst stage. *Hum Reprod* 2001;**16**:1954–1958.
- Sathananthan AH. Paternal centrosomal dynamics in early human development and infertility. *J Assist Reprod Genet* 1998;**15**:129–139.
- Sathananthan AH, Tarin JJ, Gianaroli L, Ng SC, Dharmawardena V, Magli MC, Fernando R, Trounson AO. Development of the human dispermic embryo. *Hum Reprod Update* 1999;**5**:553–560.
- Schoolcraft WB, Fragouli E, Stevens J, Munne S, Katz-Jaffe MG, Wells D. Clinical application of comprehensive chromosomal screening at the blastocyst stage. *Fertil Steril* 2010;**94**:1700–1706. Elsevier.
- Scott KL, Hong KH, Scott RT. Selecting the optimal time to perform biopsy for preimplantation genetic testing. *Fertil Steril* 2013a;**100**:608–614. Elsevier Inc.
- Scott RT, Upham KM, Forman EJ, Hong KH, Scott KL, Taylor D, Tao X, Treff NR. Blastocyst biopsy with comprehensive chromosome screening and fresh embryo transfer significantly increases in vitro fertilization implantation and delivery rates: A

- randomized controlled trial. *Fertil Steril* 2013b;**100**:697–703. Elsevier Inc.
- Scott RT, Upham KM, Forman EJ, Zhao T, Treff NR. Cleavage-stage biopsy significantly impairs human embryonic implantation potential while blastocyst biopsy does not: A randomized and paired clinical trial. *Fertil Steril* 2013c;**100**:624–630. Elsevier Inc.
- Simerly C, Wu GJ, Zoran S, Ord T, Rawlins R, Jones J, Navara C, Gerrity M, Rinehart J, Binor Z, *et al.* The paternal inheritance of the centrosome, the cell's microtubule-organizing center, in humans, and the implications for infertility. *Nat Med* 1995;**1**:47–52.
- Simpson JL. DEBATE-CONTINUED What next for preimplantation genetic screening? Randomized clinical trial in assessing PGS: necessary but not sufficient. 2008;**23**:2179–2181.
- Singh R, Sinclair KD. Metabolomics: Approaches to assessing oocyte and embryo quality. *Theriogenology* 2007;**68**:
- Soler A, Sánchez A, Margarit E, Badenas C. Diagnóstico prenatal de disomía uniparental &. 2015;**4**:108–116.
- Staessen C, Janssenswillen C, Devroey P, Steirteghem a C Van. Cytogenetic and morphological observations of single pronucleated human oocytes after in-vitro fertilization. *Hum Reprod* 1993;**8**:221–223.
- Staessen C, Platteau P, Assche E Van, Michiels A, Tournaye H, Camus M, Devroey P, Liebaers I, Steirteghem A Van. Comparison of blastocyst transfer with or without preimplantation genetic diagnosis for aneuploidy screening in couples with advanced maternal age: a prospective randomized controlled trial. *Hum Reprod* 2004;**19**:2849–2858.
- Staessen C, Steirteghem A Van. The genetic constitution of multinuclear blastomeres and their derivative daughter blastomeres. *Hum Reprod* 1998;**13**:1625–1631.
- Staessen C, Steirteghem AC Van. The chromosomal constitution of embryos developing from abnormally fertilized oocytes after intracytoplasmic sperm injection and conventional in-vitro fertilization. *Hum Reprod* 1997;**12**:321–327.
- Steptoe PC, Edwards RG, Purdy JM. Clinical aspects of pregnancies established with cleaving embryos grown *in vitro*. *BJOG An Int J Obstet Gynaecol* 1980;**87**:757–768.
- Storr A, Venetis CA, Cooke S, Susetio D, Kilani S, Ledger W. Morphokinetic parameters using time-lapse technology and day 5 embryo quality: a prospective cohort study. *J Assist Reprod Genet* 2015;**32**:1151–1160.
- Sultan KM, Munné S, Palermo GD, Alikani M, Cohen J. Chromosomal status of uni-pronuclear human zygotes following in-vitro fertilization and intracytoplasmic sperm injection. *Hum Reprod* 1995;**10**:132–136.
- Swain JE. Could time-lapse embryo imaging reduce the need for biopsy and PGS? *J Assist Reprod Genet* 2013;**30**:1081–1090.

7. BIBLIOGRAFIA

T

- Tanaka A, Yumoto K, Iwata K, Mizoguchi M, Tsuneto M, Mio Y. Dynamic analysis of human parthenogenetic zygotes induced by artificial oocyte activation. *ASRM* 2016;, p. P-215.
- Tarin JJ, Trounson AO, Sathananthan H. Origin and ploidy of multipronuclear zygotes. *ReprodFertDevelop* 1999;**11**:273–279.
- Tesarik J, Greco E. The probability of abnormal preimplantation development can be predicted by a single static observation on pronuclear stage morphology. *Hum Reprod* 1999;**14**:1318–1323.
- Tesarik J, Kopecny V. Development of human male pronucleus: Ultrastructure and timing. *Gamete Res* 1989;**24**:135–149.

V

- Velilla E, Escudero T, Munné S. Blastomere fixation techniques and risk of misdiagnosis for preimplantation genetic diagnosis of aneuploidy. *Reprod Biomed Online* 2002;**4**:210–217.
- Velilla E, Toro E, Colomar A, Chamosa S, Lopez-Teijón M, Fernández S. Efficiency of genetic preimplantation diagnosis for 24 chromosomes by fish. *Fertil Steril* 2011;**96**:S224. Elsevier.

W

- Wells D, Alfarawati S, Fragouli E. Use of comprehensive chromosomal screening for embryo assessment: Microarrays and CGH. *Mol Hum Reprod* 2008;**14**:703–710.
- Wells D, Sherlock JK, Handyside AH, Delhanty JD. Detailed chromosomal and molecular genetic analysis of single cells by whole genome amplification and comparative genomic hybridisation. *Nucleic Acids Res* 1999;**27**:1214–1218.
- Wilson EB. *The cell in development and heredity*. 1925; New York.
- Wilton L, Voullaire L, Sargeant P, Williamson R, McBain J. Preimplantation aneuploidy screening using comparative genomic hybridization or fluorescence in situ hybridization of embryos from patients with recurrent implantation failure. *Fertil Steril* 2003;**80**:860–868.
- Wong CC, Loewke KE, Bossert NL, Behr B, Jonge CJ De, Baer TM, Reijo Pera R a. Non-invasive imaging of human embryos before embryonic genome activation predicts development to the blastocyst stage. *Nat Biotechnol* 2010;**28**:1115–1121. Nature Publishing Group.
- Wright SJ. Sperm Nuclear Activation during Fertilization. *Curr Top Dev Biol* 1999;**46**:133–178.

X

Xu J, Zhang M, Niu W, Yao G, Sun B, Bao X, Wang L. Genome-wide uniparental disomy screen in human discarded morphologically abnormal embryos. *Nat Publ Gr* 2015;1–10. Nature Publishing Group Available from: <http://dx.doi.org/10.1038/srep12302>.

Y

Yamaguchi K, Takayanagi T, Minamoto H, Suzuki N, Ando H. Time-lapse analysis of human embryos developing from mononuclear (1PN) oocytes after conventional in vitro fertilization (IVF) and intracytoplasmic sperm injection (ICSI). *Fertil Steril* 2013;100:S385. Elsevier.

Yan J, Li Y, Shi Y, Feng HL, Gao S, Chen ZJ. Assessment of sex chromosomes of human embryos arising from monopronucleus zygotes in in vitro fertilization and intracytoplasmic sperm injection cycles of chinese women. *Gynecol Obstet Invest* 2010;69:20–23.

Yang Z, Lin J, Zhang J, Fong WI, Li P, Zhao R, Liu X, Podevin W, Kuang Y, Liu J. Randomized comparison of next-generation sequencing and array comparative genomic hybridization for preimplantation genetic screening: a pilot study. *BMC Med Genomics* 2015;8:30.

Yang Z, Liu J, Collins GS, Salem S a, Liu X, Lyle SS, Peck AC, Sills E, Salem RD. Selection of single blastocysts for fresh transfer via standard morphology assessment alone and with array CGH for good prognosis IVF patients: results from a randomized pilot study. *Mol Cytogenet* 2012;5:24.

Yang Z, Zhang J, Salem SA, Liu X, Kuang Y, Salem RD, Liu J. Selection of competent blastocysts for transfer by combining time-lapse monitoring and array CGH testing for patients undergoing preimplantation genetic screening: a prospective study with sibling oocytes. *BMC Med Genomics* 2014;7:38.

Yao G, Xu J, Xin Z, Niu W, Shi S, Jin H, Song W, Wang E, Yang Q, Chen L, *et al*. Developmental potential of clinically discarded human embryos and associated chromosomal analysis. *Sci Rep* 2016;6:23995. Nature Publishing Group.

Yin B-L, Hao H-Y, Zhang Y-N, Wei D, Zhang C-L. Good quality blastocyst from non-/monopronuclear zygote may be used for transfer during IVF. *Syst Biol Reprod Med* 2016;62:139–145. Taylor & Francis.

Z

Zamora S, Clavero A, Gonzalvo MC, Dios Luna del Castillo J de, Roldán-Nofuentes JA, Mozas J, Castilla JA. PGS-FISH in reproductive medicine and perspective directions for improvement: a systematic review. *J Assist Reprod Genet* 2011;28:747–757. Springer US: Boston.

7. BIBLIOGRAFIA

Zaninovic N, Zhan Q, Rosenwaks Z. Time-lapse implementation in a clinical setting outcome results. In Meseguer M, editor. *Time-lapse Microsc in-vitro Fertil* 2016;, p. 144–164. Cambridge University Press: Cambridge.

AGRAÏMENTS

AGRAÏMENTS

No puc acabar aquesta tesi sense donar les gràcies a tots els que, d'una manera o una altra, l'heu fet possible:

A les meves directores de tesi, la Montse i la Fanny, per ensenyar-me tant, per les revisions (i retallades) minucioses, per animar-me i per trobar sempre un forat per reunir-nos. Gràcies per fer-me sentir acompanyada durant tots aquests anys!

A l'Anna, per tot el seu suport i la seva visió crítica.

Al Dr. Barri, per permetre'm formar part del seu equip.

Al Dr. Coroleu i la resta de clínics, pel seu suport i per aconseguir que les pacients firmessin els consentiments dels estudis.

A la Mònica, per proposar-me un treball que va ser l'inici de la meva tesi i pels bons consells.

A la Marta Tresanchez i al Lluç, per l'ajuda en els experiments i per fer que sigui un gust treballar amb vosaltres al laboratori de DGP.

A la Marta Ballester, per la seva amistat i els cafès a mig matí que m'han salvat més d'un dia.

A la resta de biòlegs: Bea, Clara, Cris, Eli, Fina, Gemma, Laura, Miquel, Yolanda, gràcies pels ànims, per pensar en mi cada vegada que veieu un 1PN i ajudar-me a "fitxar-los"!

Als màsters que m'han ajudat tantíssim posant ordre a bases de dades infernals: Chantal, Vanesa, Víctor, Laura, us dec una birra!

Al Nacho, per posar sentit a l'estadística i treure'm resultats fins a l'infinit.

A l'Eva Sales, per aconseguir-me tots els articles d'aquesta tesi...i en temps rècord!

A tots els pacients que, desinteressadament, han cedit els seus embrions i les seves dades.

A l'Anna Vilarmau, per la seva revisió de "Pompeu".

Al Germán i l'Elisa, pel disseny de LA portada.

A les S&C, perquè les nostres nits ho arreglen tot!

Als meus companys d'universitat: Mim, Miri, Cris, Montse, David, Alba i Vane, perquè tot va començar al vostre costat.

Als meus amics de Manresa, els Candy's, els amiguetes, i els de la Muntanyeta: gràcies per demanar-me mil i una vegades com anava la tesi...i de què anava! Per animar-me i emocionar-vos amb mi.

Al "núcleo duro": Teresa, Cris, Agus i Sote, perquè estar amb vosaltres és estar en família i això descansa la ment i l'ànima.

Al Clemente, l'Encarna i la Cris, per ajudar-me tantíssim amb la logística familiar.

Als meus pares, pels vostres esforços i sacrificis, que han fet possible que jo pugui fer realitat els meus somnis, i pel vostre amor i suport incondicional, que fan que mai camini sola.

A l'Anna, perquè m'has ensenyat, com ningú, què vol dir perseverar i estimar la professió que un ha triat.

Al Javi, pels teus ànims i consells, per ensenyar-me i estimar-me tant, i fer-me riure fins i tot quan no volia. Gràcies per fer-ho tot fàcil.

A la Júlia i la Berta, que heu patit com ningú aquesta tesi. Gràcies, perquè doneu un nou sentit a tot. Perquè ho sou tot.

UAB

Universitat Autònoma
de Barcelona

